



# SAFETY WARNING! PLEASE READ CAREFULLY



## IMPORTANT SAFETY PRECAUTIONS:

**LIVES MAY BE AT RISK!** Carefully observe these instructions and any special instructions that are included with the equipment you are installing. Injury, electrical shock, or death may occur if these precautions are not followed.

**This product should be installed and serviced by a qualified licensed technician, electrician or electrical maintenance person familiar with its operation and the hazards involved.** Proper installation, which includes wiring, mounting, fusing or other overcurrent protection and grounding, can reduce the chance of electric shocks, fires or explosion in this product or products used within this product.

**WARNING:** To avoid electric shock, grounding must be installed by the customer as part of the installation. The unit must be grounded and installed in accordance with National Electrical Codes (NEC) and any local codes. Note that non-metallic enclosures do not provide grounding between conduit connections.

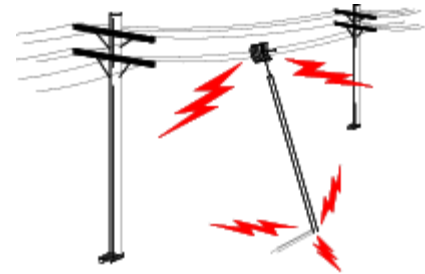
**WARNING:** Enclosure must be secured using a pad-lock when energized to prevent unauthorized access and shock hazard.

**IMPORTANT:** Affix the "**CAUTION RISK OF ELECTRICAL SHOCK**" label to the enclosure after proper installation warning people of the potential shock hazards.

**IMPORTANT:** Look over the site before beginning any installation, and anticipate possible hazards, especially these:

### CONTACTING POWER LINES CAN BE LETHAL.

Make sure no power lines are anywhere where possible contact can be made. Masts, towers, guy wires or cables may lean or fall and contact these lines. People may be injured or killed if they are touching or holding any part of equipment when it contacts electric lines. Make sure there is **NO** possibility that equipment or personnel can come in contact directly or indirectly with power lines.



Assume all overhead lines are power lines.

### TO AVOID FALLING, USE SAFE PROCEDURES WHEN WORKING AT HEIGHTS ABOVE GROUND.

- Select equipment locations that will allow safe, simple equipment installation.
- Don't work alone. A friend or co-worker can save your life if an accident happens.
- Use approved non-conducting ladders and other safety equipment. Make sure all equipment is in good repair.
- If an enclosure or mast begins falling, don't attempt to catch it. Stand back and let it fall.
- If anything such as an enclosure or mast does come in contact with a power line, **DON'T TOUCH IT OR ATTEMPT TO MOVE IT.** Instead, save your life by calling the power company.
- Don't attempt to install an enclosure on windy days.

### IF A PERSON COMES IN CONTACT WITH ELECTRICAL POWER, AND CANNOT MOVE:

- **DON'T TOUCH THAT PERSON, OR YOU MAY BE ELECTROCUTED.**
- Use a non-conductive dry board, stick or rope to push or drag them so they no longer are in contact with electrical power.
- Once they are no longer contacting electrical power, administer CPR if you are certified, and make sure that emergency medical aid has been requested.

