

For your safety operation

This product has been designed and manufactured to assure personal safety. Improper operation can result in bodily injury and serious damage to this product. Please read and observe all warnings instructions given in this operation manual.

- ★ **Wear safety glasses** before handling optical fiber to protect the eyes. Small pieces of glass fiber are very sharp and might get into the eyes or under the skin and cause injury.
- ★ **Never look into** the end of a connector or an optical fiber which may have a laser coupled to it. Laser light may damage your eyes. Please note that laser light is not visible.
- ★ If working in high places, please be careful not to drop any tools.
(Please use a wrist strap etc.)

Composition

Connector (with wedge): 10pcs
 Boot: 10pcs
 Fiber holder for 900 μm fiber: 1pc
 Assembling Jig: 1pc



Following tools shall be required for assembling the above parts,

1. Fiber Cleaver
2. Jacket Remover

XP Fit Plus LC 900 μm Field Installable Connector Instruction Manual (ETP-1108-001-01)

Precautions

1. Improper assembly will result in a loss of performance.
Please read instructions given in this operation manual.
2. The product is sensitive to dirt or dust. Do not take connector out of the package **until it is to be used**.
3. The performance will be influenced by the cleaved fiber surface condition. Please use a cleaver that has a good blade.
4. Please **insert the fiber into the connector slowly**. If the fiber is roughly inserted, it might be damaged or broken, leading to product failure. Broken fiber could be scattered in all directions.
5. Do not remove the dust cap **until the connector has been completely assembled**.
6. A proper amount of index matching gel is applied in the connector. Do not **insert fiber more than once**.
7. Product properties are referenced to specification No. EPS-0109-002-xx

Assembly tools example

1 Fiber cleaver FC-7



2 Jacket remover JR-25



2 Jacket remover JR-M03



SENKO ADVANCED COMPONENTS, INC.

Americas
 USA EAST 1-888-32-SENKO
 USA WEST 1-858-623-3300
 Sales-Americas@senko.com

Asia
 HONG KONG +852-2121-0516
 SHANGHAI +86-21-5830-4513
 SHENZHEN +86-755-2533-4893
 WUHAN +86-27-8725-9057
 Sales-Asia@senko.com

Europe
 UK +44 (0) 118 982 1600
 ITALY +39 011 839 9828
 POLAND +48 71 79 88 152
 Sales-Europe@senko.com

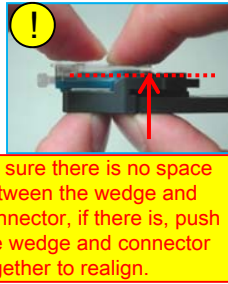
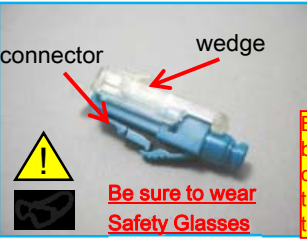
Asia Pacific
 AUSTRALIA +61 (0) 3 9755-7922
 Sales-Asia-Pacific@senko.com

Middle East North Africa
 P.O. Box # 262381, Jebel Ali, Dubai, U.A.E.
 Sales-MENA@senko.com

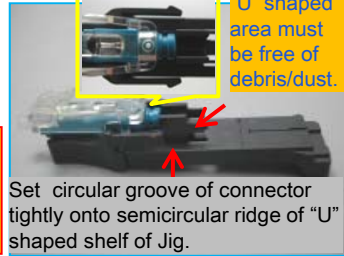
WWW.SENKO.COM

Japan
 TOKYO +81 (0) 3 3262-0211
 Sales-Japan@senko.com

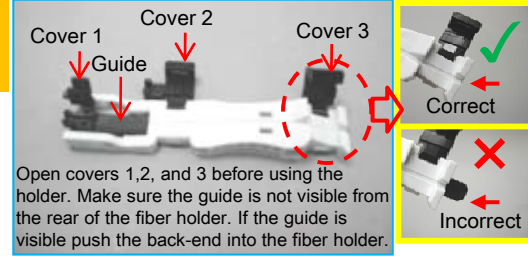
【1】 Preparing connector



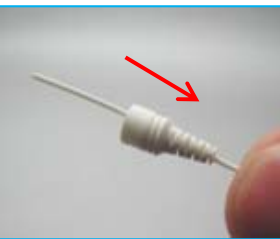
【2】 Setting connector



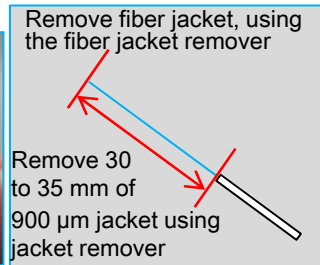
【3】 Preparing the fiber holder



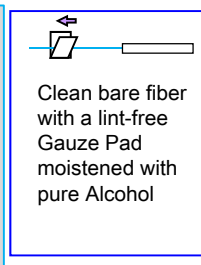
【4】 Install boot onto fiber



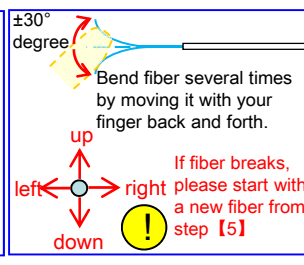
【5】 Removing fiber jacket



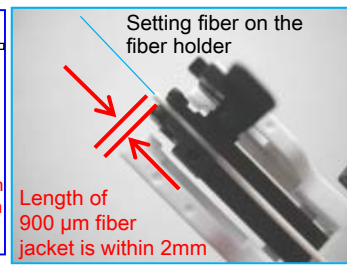
【6】 Cleaning bare fiber



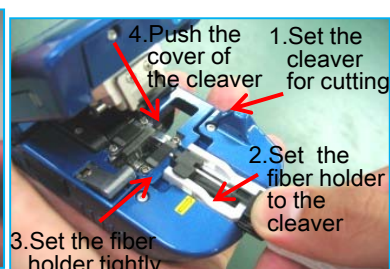
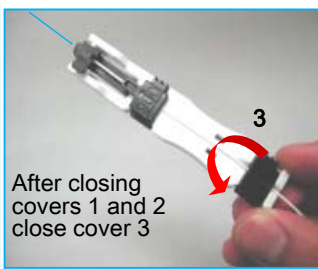
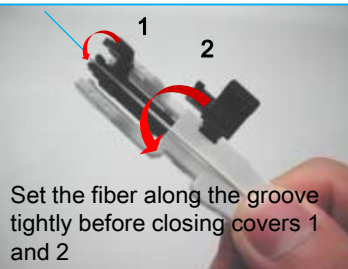
【7】 Screening fiber



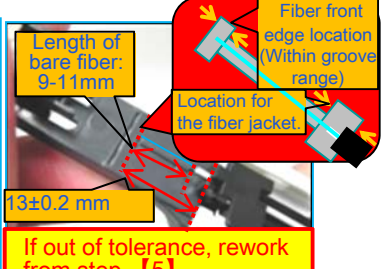
【8】 Setting fiber on the fiber holder



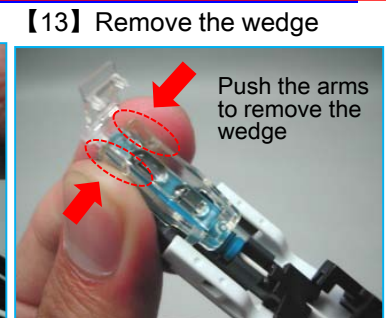
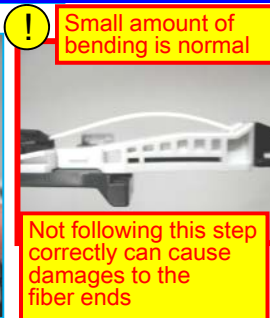
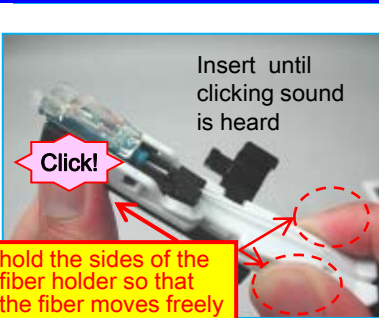
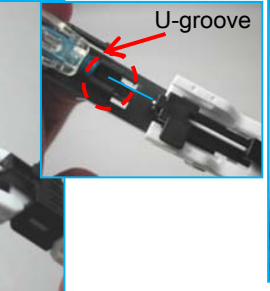
【9】 The fiber cleaver



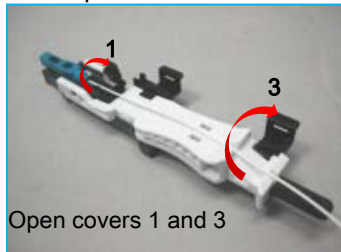
【10】 Fiber length check



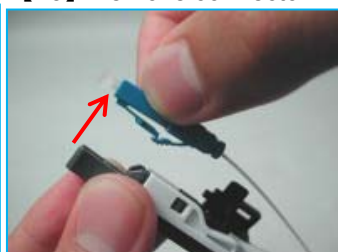
【11】 Inserting fiber



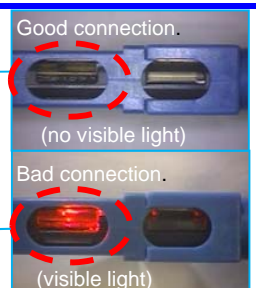
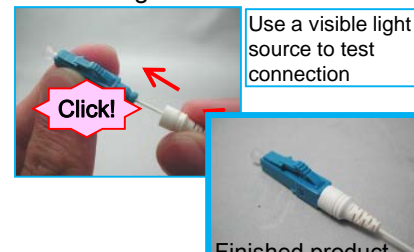
【14】 Open the cover



【15】 Remove connector

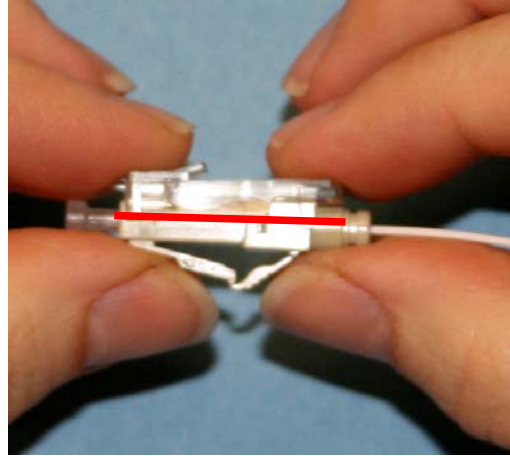


【16】 Fitting the boot

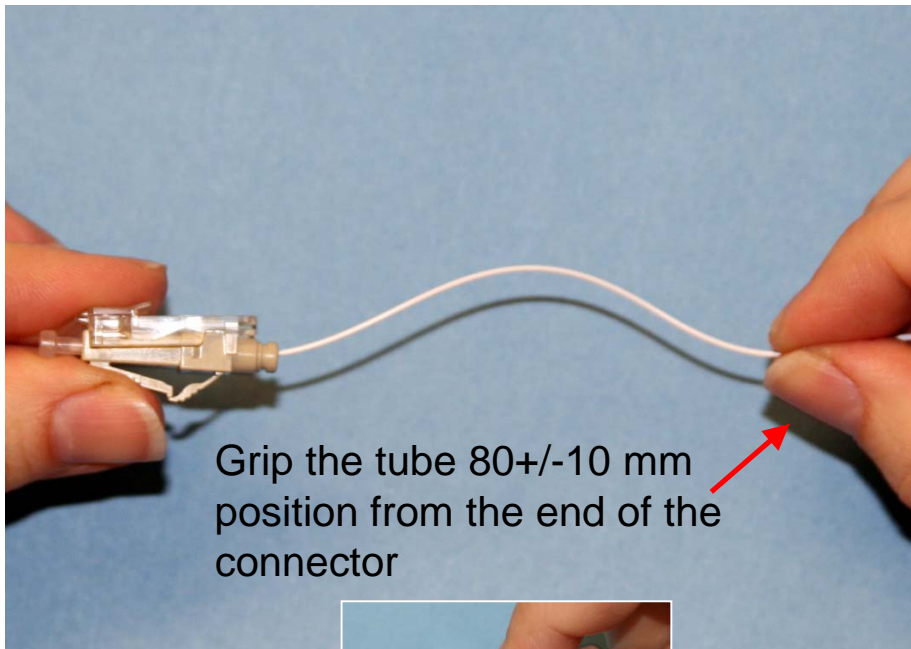


If the connector optical properties are insufficient to use, you can modify the connector properties by re-inserting the fiber and adjust the splice statement.

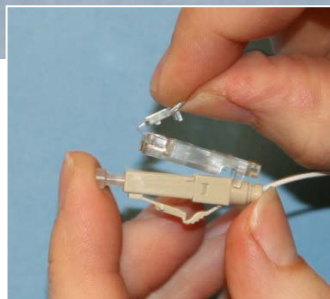
1 – Remove the boot and attach the wedge on a connector again (make sure there is no space between the wedge and the connector)



2 - Push the inserted fiber and create the bend again
DO NOT PULL FIBER OUT FROM THE CONNECTOR



3 - Remove the Wedge



Push the arm to remove the wedge

4 – Re-install the boot