

Passive CWDM, Compact Demux, 12 channel, starting at 1271nm, 20 nm spacing, 900um 1m fiber, no connector w/ Express Port



## PCWND-12327-19N3

### Features

- Passive
- CWDM
- Compact Demux
- 12 channel
- Starting at 1271nm
- 20nm spacing
- 900um fiber 1m long with no connector
- Express Port

### Applications

- Single Mode Fiber Networking
- Single Fiber
- Mux function
- Metro transport
- Regional Distribution
- Outside Plant (OSP) Operation

### Description

L-com's PCWND-12327-19N3 is a CWDM passive filter with 12 channels. L-com's PCWND-12327-19N3 is a compact demultiplexer module starting at channel 1271nm. L-com's PCWND-12327-19N3 has 20nm spacing with 900um fiber lead which is 1m long and has no connector. L-com's PCWND-12327-19N3 has a express port designed for adding more wavelengths to the existing network. It is used by connecting the common (or line) port from another multiplexer utilizing different wavelengths. The addition of these channels allows for network expansion without interruption of existing connectivity, or additional fiber usage. L-com's PCWND-12327-19N3 is one of thousands of fiber optic products available in-stock and ready to ship today.

### Configuration

Filter Type	CWDM
Module Type	Compact
Module Function	Mux/Demux
Number of Channels	12
Starting Channel	1271nm
Optional Ports	Express Port

### Filter Specifications

Description	Minimum	Typical	Maximum	Units
Operating Wavelength	1260		1620	nm
Pass Band	-6.5		6.5	nm
Pass Band Ripple			0.5	dB
Channel Spacing (nm)		20		nm
Channel Insertion Loss			2	dB
Return Loss	45			dB
Directivity			50	dB
PDL			0.2	dB
PMD			0.2	PS
Power Handling			300	mW

Click the following link (or enter part number in "SEARCH" on website) to obtain additional part information including price, inventory and certifications:  
[Passive CWDM, Compact Demux, 12 channel, starting at 1271nm, 20 nm spacing, 900um 1m fiber, no connector w/ Express Port PCWND-12327-19N3](#)

Passive CWDM, Compact Demux, 12 channel, starting at 1271nm,  
20 nm spacing, 900um 1m fiber, no connector w/ Express Port



## PCWND-12327-19N3

### Size

Length	2.36 in [59.94 mm]
Weight	0.24 lbs [108.86 g]

### Environmental Specifications

#### Temperature

Operating Range	-5 to +70 deg C
Storage Range	-40 to +85 deg C

**Compliance Certifications** (see [product page](#) for current document)

### Plotted and Other Data

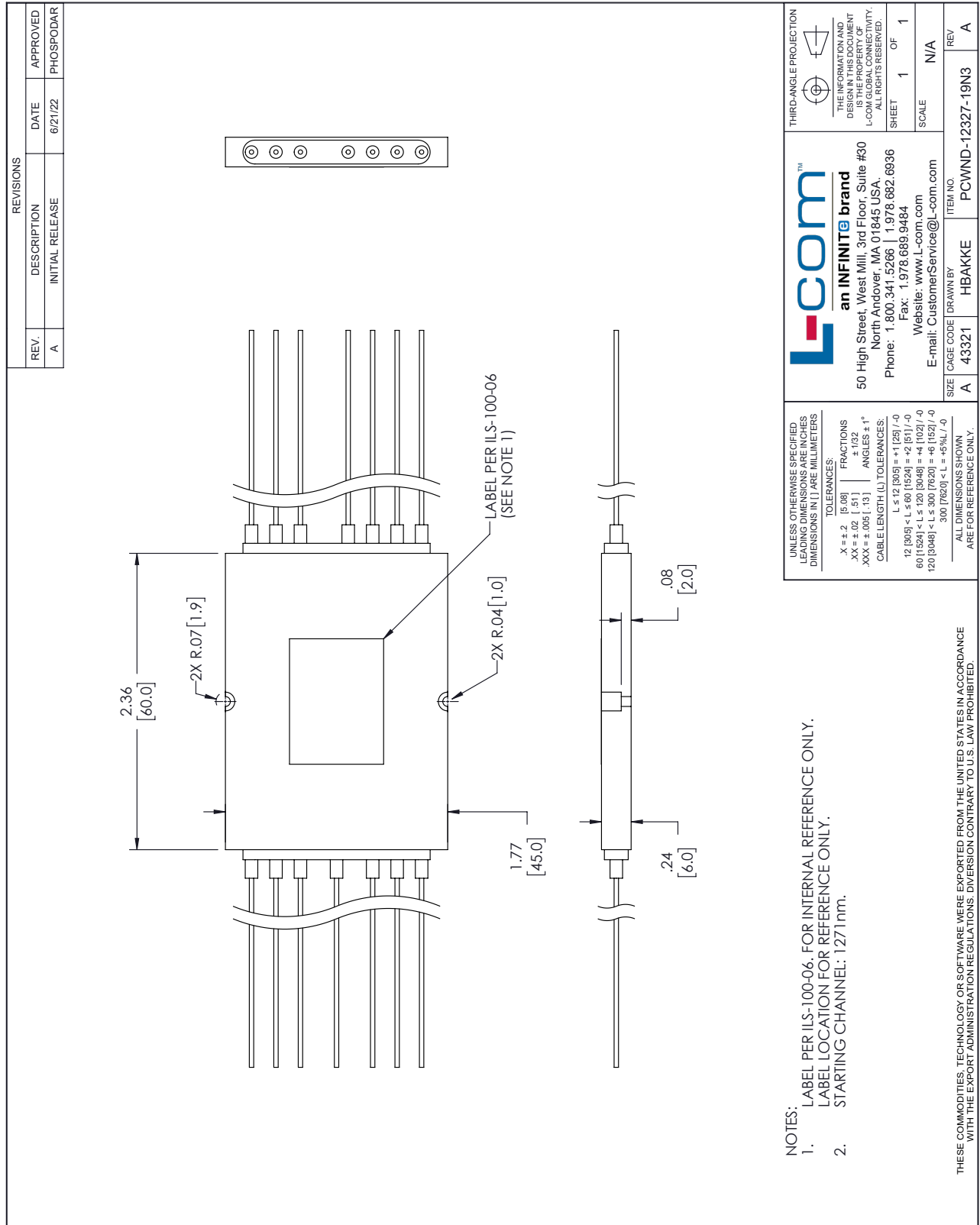
Notes:

Passive CWDM, Compact Demux, 12 channel, starting at 1271nm, 20 nm spacing, 900um 1m fiber, no connector w/ Express Port from L-com has same day shipment for domestic and International orders. Our portfolio includes coaxial cable assemblies, connectors, adapters and custom products as well as lightning and surge protectors, NEMA rated enclosures, and an RF product line which includes antennas, amplifiers, passive, and active components.

The information contained within this document is accurate to the best of our knowledge and representative of the part described herein. It may be necessary to make modifications to the part and/or the documentation of the part in order to impliment improvements. L-com reserves the right to make such changes as required. Unless otherwise stated, all specifications are nominal. L-com does not make any representation or warranty regarding the suitability of the part described herein for any particular purpose, and L-com does not assume liability arising out of the use of any part or document.

Passive CWDM, Compact Demux, 12 channel, starting at 1271nm, 20 nm spacing, 900um 1m fiber, no connector w/ Express Port

L-com CAD Drawing



- NOTES:
- LABEL PER ILS-100-06, FOR INTERNAL REFERENCE ONLY.
  - LABEL LOCATION FOR REFERENCE ONLY.
  - STARTING CHANNEL: 1271nm.

**L-com**<sup>TM</sup>  
an INFINITE brand

50 High Street, West Mill, 3rd Floor, Suite #30  
North Andover, MA 01845, USA.  
Phone: 1.800.341.5266 | 1.978.682.6936  
Fax: 1.978.689.9484  
Website: www.L-com.com  
E-mail: CustomerService@L-com.com

THIRD-ANGLE PROJECTION

THE INFORMATION AND DIMENSIONS SHOWN ARE THE PROPERTY OF L-COM GLOBAL CONNECTIVITY. ALL RIGHTS RESERVED.

SHEET 1 OF 1

SCALE N/A

SIZE	CAGE CODE	DRAWN BY	ITEM NO.
A	43321	HBAKKE	PCWIND-12327-19N3
			REV A