

BNC Male to BNC Female Bulkhead Cable Assembly using RG178 Coax, 6 FT



**LCCA30057-FT6**

**Configuration**

- Connector 1: BNC Male
- Connector 2: BNC Female Bulkhead
- Cable Type: RG178

**Features**

- Max Frequency 1 GHz
- 70% VoP
- FEP Jacket
- Heat Shrink Strain Relief

**Applications**

- General Purpose
- Laboratory Use



**Description**

L-com's LCCA30057-FT6 is a BNC male to BNC female bulkhead cable assembly using RG178 coax, 6 FT and ships same-day. The RG178 coax of this BNC cable uses the PTFE dielectric with a VoP of 70%. These flexible RF cable assemblies are ideal for applications where flexure is required. Our L-com BNC to BNC cable assembly has a male to female gender configuration with flexible RG178 series coax and operates to 1 GHz. The shielding of this BNC cable is comprised of silver plated copper braid. L-com's RF cable assembly with BNC bulkhead interface enables system designers to have external connections on their product enclosures or to be used for other rack mount and panel mount applications.

Custom versions of this BNC male to BNC female cable, along with the rest of L-com's other RF assemblies, can also be built and shipped same day. Other available RF cable assembly value added services from L-com include connector orientation or clocking, heat shrink booting and custom labeling. RF testing can also be performed to document the electrical performance of your cable assembly. Contact a sales representative for testing or custom RF cable quotes. Part number LCCA30057-FT6 L-com BNC Male to BNC Female Bulkhead Cable Assembly using RG178 Coax, 6 FT data sheet PDF includes details of the RF product specifications, CAD drawing(s) and dimensions below.

BNC Male to BNC Female Bulkhead Cable Assembly using RG178 Coax, 6 FT



## LCCA30057-FT6

### Electrical Specifications

| Description             | Minimum | Typical      | Maximum | Units        |
|-------------------------|---------|--------------|---------|--------------|
| Frequency Range         | DC      |              | 1,000   | MHz          |
| VSWR                    |         |              | 1.35:1  |              |
| Velocity of Propagation |         | 70           |         | %            |
| Capacitance             |         | 29.4 [96.46] |         | pF/ft [pF/m] |
| Operating Voltage (AC)  |         |              | 500     | Vrms         |

### Specifications by Frequency

| Description           | F1   | F2   | F3   | F4   | F5    | Units |
|-----------------------|------|------|------|------|-------|-------|
| Frequency             | 50   | 100  | 250  | 500  | 1,000 | MHz   |
| Insertion Loss (Max.) | 0.89 | 1.03 | 1.45 | 2.04 | 2.87  | dB    |

#### Electrical Specification Notes:

The Insertion Loss data above is based on the performance specifications of the coax cable and connectors used in this assembly. The Insertion Loss is estimated as 0.1 dB per connector.

### Mechanical Specifications

#### Cable Assembly

Length 72 in [182.88 cm]  
Diameter 0.072 in [1.83 mm]

#### Cable

Cable Type RG178  
Impedance 50 Ohms  
Inner Conductor Type Stranded  
Inner Conductor Material and Plating Copper, Silver  
Dielectric Type PTFE  
Number of Shields 1  
Shield Layer 1 Silver Plated Copper Braid  
Jacket Material FEP, Tan  
Jacket Diameter 0.072 in [1.83 mm]

Repeated Minimum Bend Radius 0.4 in [10.16 mm]

BNC Male to BNC Female Bulkhead Cable Assembly using RG178 Coax, 6 FT



## LCCA30057-FT6

### Connectors

| Description                        | Connector 1     | Connector 2           |
|------------------------------------|-----------------|-----------------------|
| Type                               | BNC Male        | BNC Female Bulkhead   |
| Specification                      | MIL-STD-348A    |                       |
| Impedance                          | 50 Ohms         | 50 Ohms               |
| Contact Material and Plating       | Brass, Gold     | Phosphor Bronze, Gold |
| Contact Plating Specification      | 30 µin minimum  |                       |
| Dielectric Type                    | PTFE            | POM                   |
| Body Material and Plating          | Brass, Nickel   | Brass, Nickel         |
| Body Plating Specification         | 100 µin minimum |                       |
| Coupling Nut Material and Plating  | Brass, Nickel   |                       |
| Coupling Nut Plating Specification | 100 µin minimum |                       |

### Environmental Specifications

#### Temperature

Operating Range -55 to +200 deg C

**Compliance Certifications** (see [product page](#) for current document)

### Plotted and Other Data

Notes:

- Values at 25°C, sea level.

BNC Male to BNC Female Bulkhead Cable Assembly using RG178 Coax, 6 FT



## LCCA30057-FT6

### How to Order

Part Number Configuration:

**LCCA30057 - xx uu**



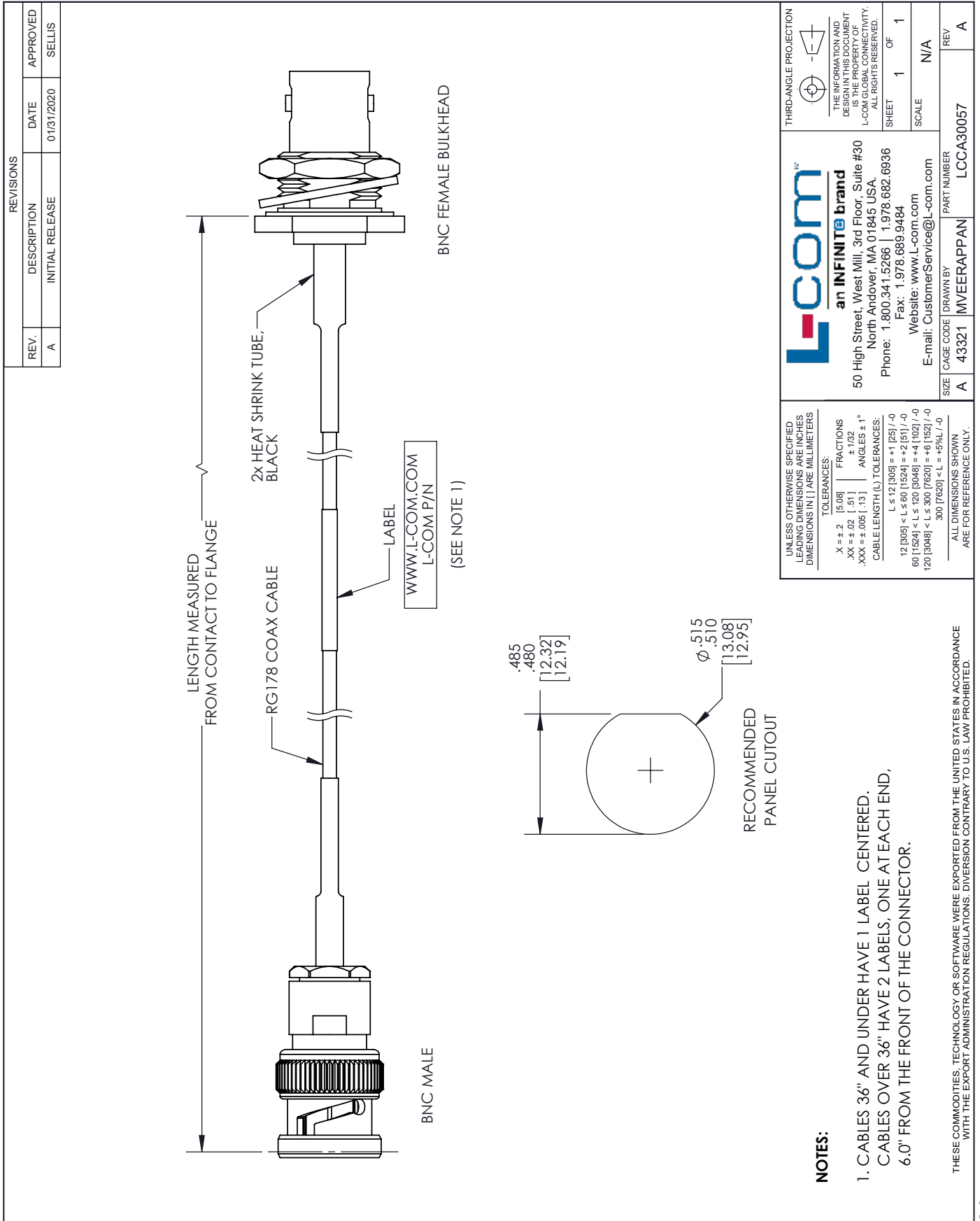
Example: LCCA30057-12 = 12 inches long cable  
LCCA30057-100cm = 100 cm long cable

BNC Male to BNC Female Bulkhead Cable Assembly using RG178 Coax, 6 FT from L-com has same day shipment for domestic and International orders. L-com is a leading manufacturer of wired and wireless connectivity products and committed to in-stock availability and same day shipping. Our portfolio includes coaxial cable assemblies, connectors, adapters and custom products as well as lightning and surge protectors, NEMA rated enclosures, and an RF product line which includes antennas, amplifiers, passive, and active components.

The information contained within this document is accurate to the best of our knowledge and representative of the part described herein. It may be necessary to make modifications to the part and/or the documentation of the part in order to impliment improvements. L-com reserves the right to make such changes as required. Unless otherwise stated, all specifications are nominal. L-com does not make any representation or warranty regarding the suitability of the part described herein for any particular purpose, and L-com does not assume liability arising out of the use of any part or document.ontained within this document is accurate to the best of our knowledge and representative of the part described herein. It may be necessary to make modifications to the part and/or the documentation of the part in order to impliment improvements. L-com reserves the right to make such changes as required. Unless otherwise stated, all specifications are nominal. L-com does not make any representation or warranty regarding the suitability of the part described herein for any particular purpose, and L-com does not assume liability arising out of the use of any part or document.

# BNC Male to BNC Female Bulkhead Cable Assembly using RG178 Coax, 6 FT

## L-com CAD Drawing



**an INFINITE brand**  
 50 High Street, West Mill, 3rd Floor, Suite #30  
 North Andover, MA 01845 USA.  
 Phone: 1.800.341.5266 | 1.978.682.6936  
 Fax: 1.978.689.9484  
 Website: www.L-com.com  
 E-mail: CustomerService@L-com.com

THIRD-ANGLE PROJECTION

THE INFORMATION AND DESIGN IN THIS DOCUMENT IS THE PROPERTY OF L-COM GLOBAL CONNECTIVITY. ALL RIGHTS RESERVED.

SHEET 1 OF 1

SCALE N/A

REV A

|      |           |            |             |     |
|------|-----------|------------|-------------|-----|
| SIZE | CAGE CODE | DRAWN BY   | PART NUMBER | REV |
| A    | 43321     | MVEERAPPAN | LCCA30057   | A   |