

DC SPD 1000VDC THREE-POLE, DIN-RAIL, UL1449 TYPE 2



I2R-T2DC-1000Y-LC

Features

- UL 1449 4th Edition Listed, Type 2 SPDs
- High Capacity 50kA MOV Protection
- Local and Remote Visual Status Indicators
- DIN-Rail Mount

Applications

- Communications Base Stations
- Industrial Automation
- Photovoltaic Power Systems
- IT & Data Centers
- Utilities

Description

DC surge protector (also known as SPD or lightning protector) I2R-T2DC-1000Y-LC from L-Com is a DIN-Rail style SPD that utilizes state of the art MOV technology to protect critical equipment that operates on a 1000 Vdc electrical service. This surge protector provides effective protection against electrical transient surges that are generated both by external lightning events and by internal switching events and supports long-term system reliability by safely shunting high amounts of transient energy while maintaining a very low clamping voltage. L-Com DC surge protectors are available in stock with same day shipping.

Electrical Specifications

Description	Minimum	Typical	Maximum	Units
Service Voltages		1,000		Vdc
Maximum Continuous Operating Voltage (MCOV)				
MCOV DC			1,120	Vdc

Surge Protection Specification

Description	Minimum	Typical	Maximum	Units
Surge Protection Technology		MOV		
Surge Protection Modes		LINE-GND, RET-GND, LINE-RET		
Response Time			25	ns
8/20 μ s Surge Current		20	50	kA
VPR 8/20 μ s L-G			2,500	Vpk
Nominal Discharge Surge Current (In)		20		kA
SCCR (Short Circuit Current Rating)		50		kAIC

Click the following link (or enter part number in "SEARCH" on website) to obtain additional part information including price, inventory and certifications:
[DC SPD 1000VDC THREE-POLE, DIN-RAIL, UL1449 TYPE 2 I2R-T2DC-1000Y-LC](#)

DC SPD 1000VDC THREE-POLE, DIN-RAIL, UL1449 TYPE 2



I2R-T2DC-1000Y-LC

Mechanical Specifications

Size		
Height	3.94 in	[100.08 mm]
Width	2.13 in	[54.1 mm]
Depth	2.56 in	[65.02 mm]
Weight	1.2 lbs	[544.31 g]
Housing Material and Plating	ABS	

Environmental Specifications

Temperature Range (Operational)	-20 to +50 deg C
Environmental Protection Rating	IP20
Humidity	95% non-condensing

Installation

Mount Type	DIN-Rail
Service Wiring Terminal	
Compression Lug	#10 to #4 AWG
Status Indication Terminal	
3-Position Screw Terminal	#22 to #16 AWG

Compliance Certifications

UL Compliant	UL 1449 4th Ed.
--------------	-----------------

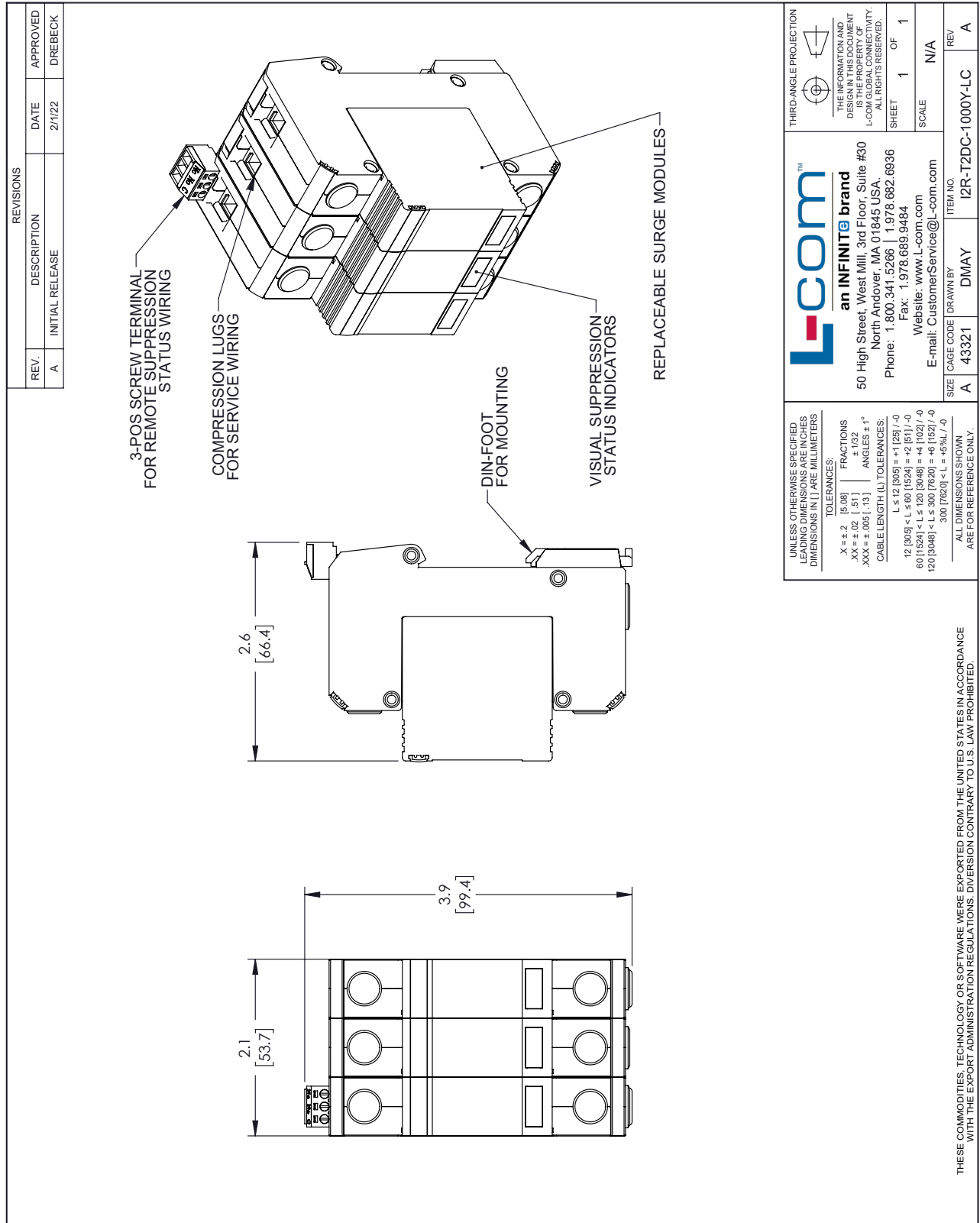
Our portfolio includes cable assemblies, connectors, adapters and custom products, as well as their wireless product line which includes antennas, RF amplifiers, coaxial lightning and surge protectors, and NEMA rated enclosures.

Click the following link (or enter part number in "SEARCH" on website) to obtain additional part information including price, inventory and certifications: [DC SPD 1000VDC THREE-POLE, DIN-RAIL, UL1449 TYPE 2 I2R-T2DC-1000Y-LC](#)

URL: <https://www.l-com.com/i2r-t2dc-1000y-lc-p.aspx>

The information contained within this document is accurate to the best of our knowledge and representative of the part described herein. It may be necessary to make modifications to the part and/or the documentation of the part in order to implement improvements. L-com reserves the right to make such changes as required. Unless otherwise stated, all specifications are nominal. L-com does not make any representation or warranty regarding the suitability of the part described herein for any particular purpose, and L-com does not assume liability arising out of the use of any part or document.

I2R-T2DC-1000Y-LC CAD Drawing



UNLESS OTHERWISE SPECIFIED LEADING DIMENSIONS ARE IN INCHES DIMENSIONS IN [] ARE IN MILLIMETERS

TOLERANCES:
 .X = ±.2 [5.08] FRACTIONS ± 1/32
 .XX = ±.02 [.51] ANGLES ± 1°
 .XXX = ±.005 [.13]
 CABLE LENGTH (L) TOLERANCES:
 L ≤ 12 [305] = +1 [25] / -0
 12 [305] < L ≤ 60 [1524] = +2 [51] / -0
 60 [1524] < L ≤ 120 [3048] = +4 [102] / -0
 120 [3048] < L ≤ 300 [7620] = +6 [152] / -0
 300 [7620] < L = +5%L / -0

ALL DIMENSIONS SHOWN ARE FOR REFERENCE ONLY.

THIRD-ANGLE PROJECTION

THE INFORMATION AND DIMENSIONS SHOWN HEREIN IS THE PROPERTY OF L-COM GLOBAL CONNECTIVITY. ALL RIGHTS RESERVED.

SHEET 1 OF 1

SCALE N/A

L-com
 an INFINITE brand
 50 High Street, West Mill, 3rd Floor, Suite #30
 North Andover, MA 01845, USA.
 Phone: 1.800.341.5266 | 1.978.682.6936
 Fax: 1.978.689.9484
 Website: www.L-com.com
 E-mail: CustomerService@L-com.com

ITEM NO. I2R-T2DC-1000Y-LC
 DRAWN BY DMAY
 CAGE CODE A 43321

REV A

THESE COMMODITIES, TECHNOLOGY OR SOFTWARE WERE EXPORTED FROM THE UNITED STATES IN ACCORDANCE WITH THE EXPORT ADMINISTRATION REGULATIONS. DIVERSION CONTRARY TO U.S. LAW PROHIBITED.

T-Rev.D