

617-960 MHz / 1710-3800 MHz 6 / 7 dBi Gain MIMO Omnidirectional Antenna - Type N Female Connector, Polycarbonate Radome



## HG63807U

### Features

- All weather operation
- Includes heavy duty steel mast mounting brackets
- Lightweight polycarbonate radome
- Integral N-Female connector
- Commercial grade design
- 360° Omnidirectional Pattern
- 4 to 7 dBi gain

### Applications

- Supports low and midband LTE and 5G networks
- Point to Multipoint and Non Line of Sight (NLOS) Applications
- 600, 700, 800, 1800, 1900, 2100, 2600, 3500 and CBRS Cellular Band Operation

### Description

The L-com HG63807U is a high performance 5G / LTE outdoor omnidirectional antenna specifically designed for cellular networks. L-coms HG63807U has 5 to 7 dBi gain and can be used to broadcast Cellular LTE signals. The HG63807U operates from 617 to 3800 MHz which is ideal for 5G, LTE, PCS, UMTS applications including LoRA, LTE-M, and NB-IOT. The Multi-Band design of the L-com HG63807U antenna eliminates the need to purchase different antennas for each frequency. This simplifies installations since the same antenna can be used for a wide array of telecommunication applications where wide coverage is desired.

The HG63807U from L-com has omnidirectional patterns with vertical polarization and features Type N connectors. The Type N connectorized HG63807U antenna from L-com is designed specifically for outdoor operation and is ideal for point to multipoint use in large open areas such as base station installations or large campuses. The included mounting bracket and hardware makes this antenna very easy to install. This 5G / LTE outdoor omnidirectional antenna just like our wide selection of superior quality RF parts, ship same day. Contact our knowledgeable and friendly technical support and sales staff for your answers on antennas or other L-com products.

### Configuration

Design	Omni
Band Type	Single
Radiation Pattern	Omni Directional
Polarization	Vertical
Connector Type	N Female
Number of Ports	1

### Electrical Specifications

Description	Minimum	Typical	Maximum	Units
Frequency Range	617		3,800	MHz
Impedance		50		Ohms
Input Power			50	Watts

### Specifications by Band

Click the following link (or enter part number in "SEARCH" on website) to obtain additional part information including price, inventory and certifications:  
[617-960 MHz / 1710-3800 MHz 6 / 7 dBi Gain MIMO Omnidirectional Antenna - Type N Female Connector, Polycarbonate Radome HG63807U](#)

617-960 MHz / 1710-3800 MHz 6 / 7 dBi Gain MIMO Omnidirectional Antenna - Type N Female Connector, Polycarbonate Radome



## HG63807U

Description	Band 1	Band 2	Band 3	Band 4	Band 5	Units
Range	0.617 to 0.96	1.71 to 3.8				GHz
Gain	6	7				dBi
Horizontal HPBW	360	360				Degrees
Vertical HPBW	43	22				Degrees
VSWR Max	2:1	2.5:1				

### Mechanical Specifications

Radome Material	Polycarbonate
<b>Size</b>	
Length	19.6 in [497.84 mm]
Width	3.1 in [78.74 mm]
Mounting Mast Diameter	1.97 to 3.54 in [50.04 to 89.92 mm]
Weight	2.2 lbs [997.9 g]

### Environmental Specifications

<b>Temperature</b>	
Operating Range	-40 to +70 deg C
Wind Survivability	134.21 MPH [215.99 KPH]
Humidity	91

**Compliance Certifications** (see [product page](#) for current document)

### Plotted and Other Data

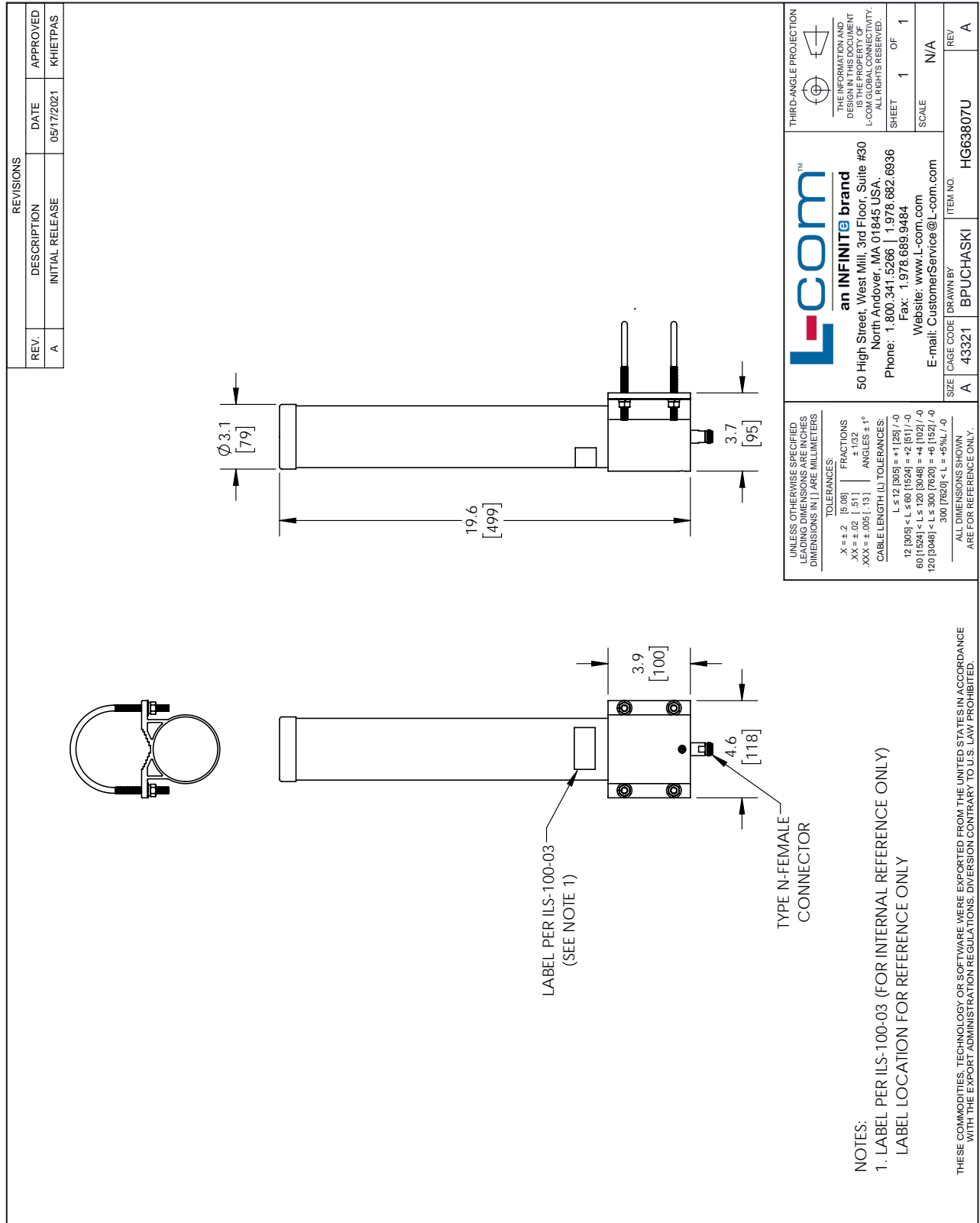
Notes:

617-960 MHz / 1710-3800 MHz 6 / 7 dBi Gain MIMO Omnidirectional Antenna - Type N Female Connector, Polycarbonate Radome from L-com has same day shipment for domestic and International orders. Our portfolio includes coaxial cable assemblies, connectors, adapters and custom products as well as lightning and surge protectors, NEMA rated enclosures, and an RF product line which includes antennas, amplifiers, passive, and active components.

The information contained within this document is accurate to the best of our knowledge and representative of the part described herein. It may be necessary to make modifications to the part and/or the documentation of the part in order to implement improvements. L-com reserves the right to make such changes as required. Unless otherwise stated, all specifications are nominal. L-com does not make any representation or warranty regarding the suitability of the part described herein for any particular purpose, and L-com does not assume liability arising out of the use of any part or document.

617-960 MHz / 1710-3800 MHz 6 / 7 dBi Gain MIMO Omnidirectional  
Antenna - Type N Female Connector, Polycarbonate Radome

L-com CAD Drawing



UNLESS OTHERWISE SPECIFIED LEADING DIMENSIONS ARE IN INCHES DIMENSIONS IN [ ] ARE MILLIMETERS

**TOLERANCES:**

.X = ±.2 [5.08]	FRACTIONS ± 1/32
.XX = ±.02 [ .51]	ANGLES ± 1°
.XXX = ±.005 [ .13]	

**CABLE LENGTH (L) TOLERANCES:**

L ≤ 12 [305] < L ≤ 60 [1524] = ±1 [25] / -0
60 [1524] < L ≤ 120 [3048] = ±4 [102] / -0
120 [3048] < L ≤ 300 [7620] = ±6 [152] / -0
300 [7620] < L = +5%L / -0

ALL DIMENSIONS SHOWN ARE FOR REFERENCE ONLY.

**L-com™**  
an INFINITE brand

50 High Street, West Mill, 3rd Floor, Suite #30  
North Andover, MA 01845, USA.  
Phone: 1.800.341.5266 | 1.978.682.6936  
Fax: 1.978.689.9484  
Website: www.L-com.com  
E-mail: CustomerService@L-com.com

THIRD-ANGLE PROJECTION

THE INFORMATION AND DIMENSIONS SHOWN HEREIN IS THE PROPERTY OF L-COM GLOBAL CONNECTIVITY. ALL RIGHTS RESERVED.

SHEET 1 OF 1

SCALE N/A

SIZE	CAGE CODE	DRAWN BY	ITEM NO.	REV
A	43321	BPUCHASKI	HG63807U	A