

5925-7125 MHz, 17 dBi, Wifi MIMO Sector Antenna, 90-degree, +/-45 Dual Pol, 2-Port, Type N Female Connector



HG5971-17XP-090-2NF

Features

- Uni band Frequency coverage for 5925 MHz to 7125 MHz
- Very High Gain 17 dBi Directional Antenna with MIMO peak performance
- Supports low-latency, bandwidth-hungry applications like high-definition video and augmented reality/virtual reality applications
- Sector antenna with 2 x Type N Female connectors
- 90° beamwidth with dual +/-45 slant polarization
- 100 W max input power per port
- Easy Install mounting bracket provided
- Weatherproof ABS – UV Resistance PVC radome

Applications

- Outdoor and Indoor Uni-band Wi-Fi 6E 5.9 GHz to 7.125GHz applications supported
- Wireless LAN systems & IEEE.802.16ax applications with MU-MIMO and OFDMA
- WiFi 6 and WiFi 6E enables higher data rates up to 35% with enhanced efficiency and speed
- Increased Bandwidth enhances spectral efficiency and supports faster radio applications
- Smart cities expansion for coverage and IOT / IIOT
- Point-to-point (PtP) or point-to-multipoint (PtMP) applications

Description

L-Com's WiFi 6e Sector Antenna HG5971-17XP-090-2NF is in stock and ready to ship on the same-day of order. The frequency range of the HG5971-17XP-090-2NF sector antennas is 5925 MHz to 7125 MHz with a gain of 17 dBi. This single band MIMO antenna supports Wi-Fi latest frequency band and has a 90-degree beam width. The 2-ports 5925-7125 MHz sector antenna include N-type female connectors with +/-45 slant polarization.

The N-type MIMO omni antenna covers a wide range of frequency bands up to 7.1GHz and is shorter than 40-inches for universal zoning compliance. The HG5971-17XP-090-2NF unlicensed WiFi 6 frequency bands sector antenna is "future-proof" in regard to network capabilities without any add-ons. The type N female sector antenna can handle maximum input power of 100 watts and uses universal radio mounts.

The WiFi 6e antenna is 2x2 MIMO ready and offers Dual slant +/- 45 polarizations, degree and 90-degree options and covers extensive frequency bands up to 7.125 GHz. These Wi-Fi 6 antennas are a good fit for the telecommunications industry and for indoor (stadium, large arenas) plus outdoor applications. The HG5971-17XP-090-2NF antennas are equipped with universal radio brackets.

These MIMO multi-port Wi-Fi 6e antennas can operate in the unlicensed bands of 6 GHz. These omni antennas can also operate within the latest Wi-Fi 6 bands of 5.9 GHz to 7.1 GHz.

Contact L-Com's expert technical support for assistance with the Wi-Fi 6 sector antenna or any sector antenna. Download our HG5971-17XP-090-2NF datasheet with specifications and CAD drawing with dimensions for details. Our knowledgeable sales team simplifies the purchasing process and ensures that your Wi-Fi sector antenna cable will be exact to specification.

Order your Wi-Fi 6e Sector Antenna HG5971-17XP-090-2NF from L-com today. There is no MOQ (minimum order quantity) and the product ships same day from our warehouse.

Configuration

Design	Sector
Band Type	Single

Click the following link (or enter part number in "SEARCH" on website) to obtain additional part information including price, inventory and certifications: [5925-7125 MHz, 17 dBi, Wifi MIMO Sector Antenna, 90-degree, +/-45 Dual Pol, 2-Port, Type N Female Connector HG5971-17XP-090-2NF](#)

5925-7125 MHz, 17 dBi, Wifi MIMO Sector Antenna, 90-degree, +/-45 Dual Pol, 2-Port, Type N Female Connector



HG5971-17XP-090-2NF

Radiation Pattern	Omni Directional
Polarization	45 Deg. Slant
Connector Type	N Female
Interface 2	N Female
Number of Ports	2
Lightning Protection	DC Grounded

Electrical Specifications

Description	Minimum	Typical	Maximum	Units
Input VSWR			2:1	
Impedance		50		Ohms
Front to Back Ratio	25			dB
Electrical Downtilt		3		Degrees
Port to Port Isolation	25			dB
Input Power			100	Watts

Specifications by Band

Description	Band 1	Band 2	Band 3	Band 4	Band 5	Units
Range	5.925 to 7.125					GHz
Gain	17					dBi
Horizontal HPBW	90					Degrees
Vertical HPBW	5					Degrees
Port to Port Isolation	25					dB
Front to Back Ratio	25					dB

Mechanical Specifications

Radome Material	PVC
Size	
Length	24.8 in [629.92 mm]
Width	7.08 in [179.83 mm]
Height	3.14 in [79.76 mm]
Mounting Mast Diameter	1.181 to 2.362 in [30.00 to 59.99 mm]
Weight	7.05 lbs [3.2 kg]

5925-7125 MHz, 17 dBi, Wifi MIMO Sector Antenna, 90-degree,
+/-45 Dual Pol, 2-Port, Type N Female Connector

HG5971-17XP-090-2NF



Environmental Specifications

Temperature

Operating Range

-40 to +60 deg C

Wind Survivability

134 MPH [215.65 KPH]

Compliance Certifications (see [product page](#) for current document)

Plotted and Other Data

Notes:

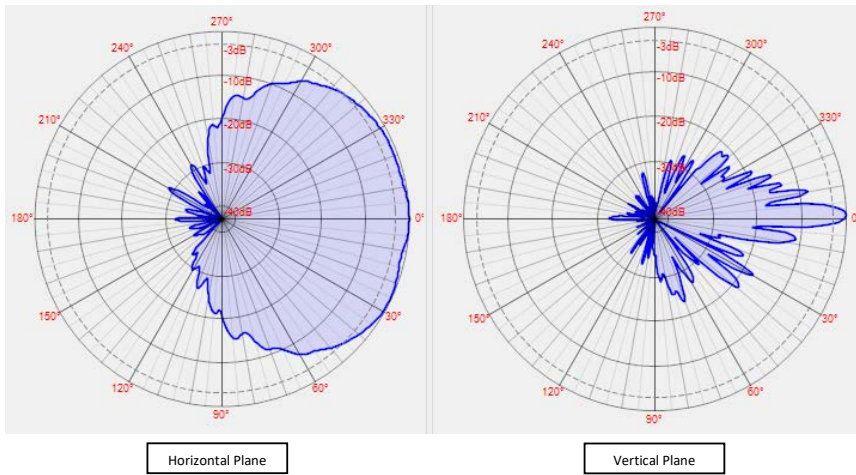
5925-7125 MHz, 17 dBi, Wifi MIMO Sector Antenna, 90-degree, +/-45 Dual Pol, 2-Port, Type N Female Connector



HG5971-17XP-090-2NF

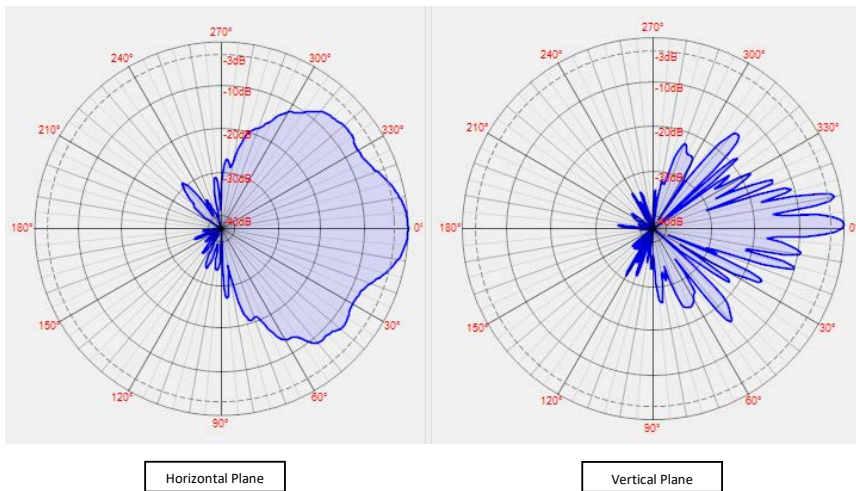
Frequency: 6300 MHz

Gain: 15.71 dBi



Frequency: 7100 MHz

Gain: 25.11 dBi



5925-7125 MHz, 17 dBi, Wifi MIMO Sector Antenna, 90-degree, +/-45 Dual Pol, 2-Port, Type N Female Connector from L-com has

5925-7125 MHz, 17 dBi, Wifi MIMO Sector Antenna, 90-degree,
+/-45 Dual Pol, 2-Port, Type N Female Connector

HG5971-17XP-090-2NF

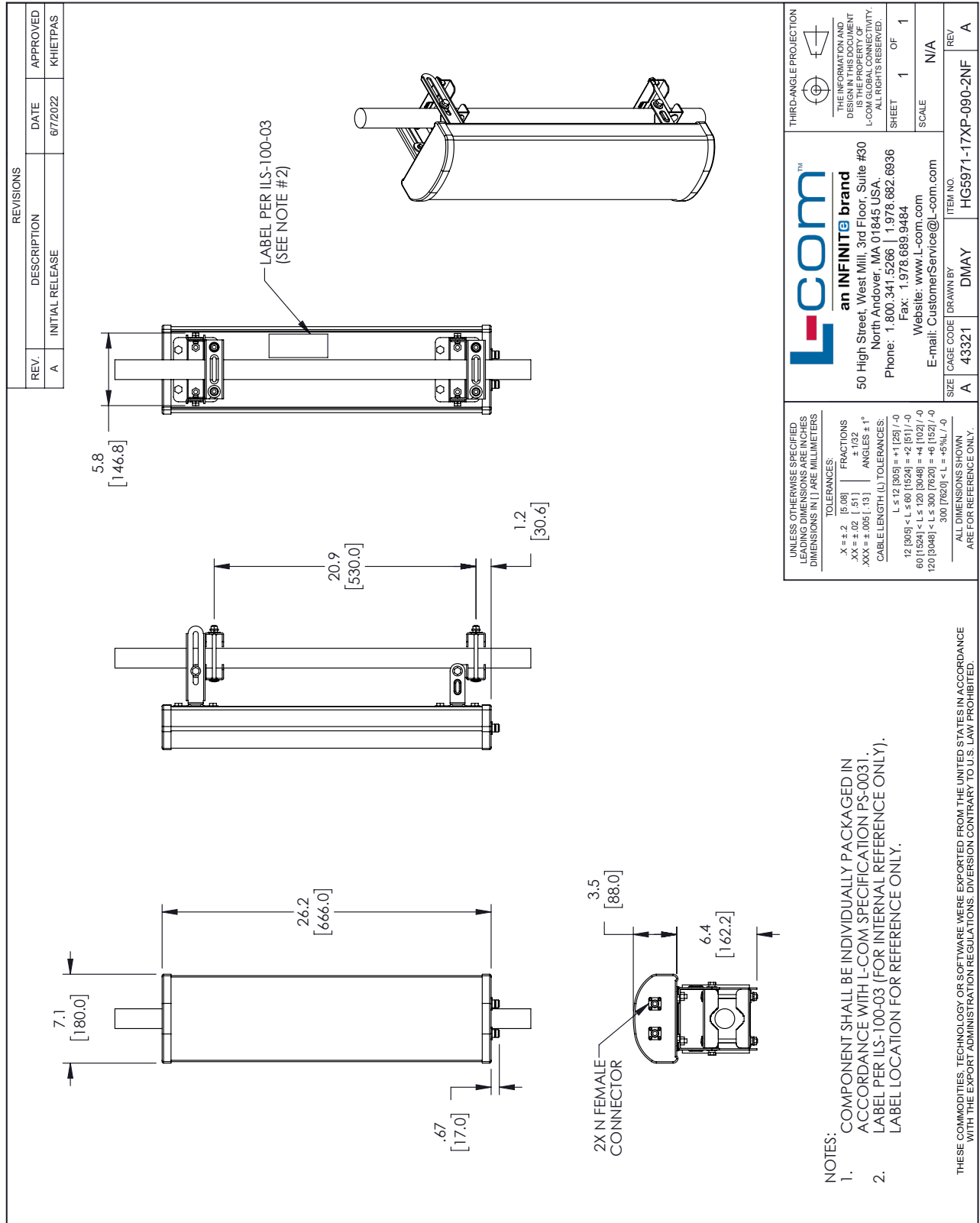


same day shipment for domestic and International orders. Our portfolio includes coaxial cable assemblies, connectors, adapters and custom products as well as lightning and surge protectors, NEMA rated enclosures, and an RF product line which includes antennas, amplifiers, passive, and active components.

The information contained within this document is accurate to the best of our knowledge and representative of the part described herein. It may be necessary to make modifications to the part and/or the documentation of the part in order to impliment improvements. L-com reserves the right to make such changes as required. Unless otherwise stated, all specifications are nominal. L-com does not make any representation or warranty regarding the suitability of the part described herein for any particular purpose, and L-com does not assume liability arising out of the use of any part or document.

5925-7125 MHz, 17 dBi, Wifi MIMO Sector Antenna, 90-degree, +/-45 Dual Pol, 2-Port, Type N Female Connector

L-com CAD Drawing



UNLESS OTHERWISE SPECIFIED LEADING DIMENSIONS ARE IN INCHES DIMENSIONS IN [] ARE MILLIMETERS

TOLERANCES:
 .X = ±.2 [5.08] FRACTIONS ± 1/32
 .XX = ±.02 [.51] ANGLES ± 1°
 .XXX = ±.005 [.13] CABLE LENGTH (L) TOLERANCES:
 L ≤ 12 [305] < L ≤ 60 [1524] = ±1 [25] / -0
 60 [1524] < L ≤ 120 [3048] = ±4 [102] / -0
 120 [3048] < L ≤ 300 [7620] = ±6 [152] / -0
 300 [7620] < L = +5%L / -0

ALL DIMENSIONS SHOWN ARE FOR REFERENCE ONLY.

THIRD-ANGLE PROJECTION

THE INFORMATION AND DIMENSIONS SHOWN ARE THE PROPERTY OF L-COM GLOBAL CONNECTIVITY. ALL RIGHTS RESERVED.

SHEET 1 OF 1

SCALE N/A

L-com™
 an INFINITE brand
 50 High Street, West Mill, 3rd Floor, Suite #30
 North Andover, MA 01845 USA.
 Phone: 1.800.341.5266 | 1.978.682.6936
 Fax: 1.978.689.9484
 Website: www.L-com.com
 E-mail: CustomerService@L-com.com

ITEM NO. HG5971-17XP-090-2NF
 DRAWN BY DMAY
 SIZE A
 CAGE CODE 43321

- NOTES:
1. COMPONENT SHALL BE INDIVIDUALLY PACKAGED IN ACCORDANCE WITH L-COM SPECIFICATION PS-0031.
 2. LABEL PER ILS-100-03 (FOR INTERNAL REFERENCE ONLY). LABEL LOCATION FOR REFERENCE ONLY.

THESE COMMODITIES, TECHNOLOGY OR SOFTWARE WERE EXPORTED FROM THE UNITED STATES IN ACCORDANCE WITH THE EXPORT ADMINISTRATION REGULATIONS. DIVERSION CONTRARY TO U.S. LAW PROHIBITED.

T-Rev-D