

HyperLink Wireless brand 4.9 GHz Full Band Ultra High Q 4-Pole Bandpass Filter Model: BPF4900A

Features

- Ultra-High Quality Microwave Cavity Filter
- Ultra Low Insertion Loss (< 1.0 dB nominal)
- Reduce Interference and Improve Performance
- Industrial Grade
- Rugged Aluminum Weatherproof Construction for Outdoor or Indoor Use
- 50 MHz Bandwidth
- Provides Lightning Protection (DC Short)
- Ideal for Homeland Security, Public Safety Services: Fire, Police and Security applications
- Compact Size
- N-Female Connectors
- RoHS Compliant
- Optional Mast Mounting Kit Available



Description

Superior Performance

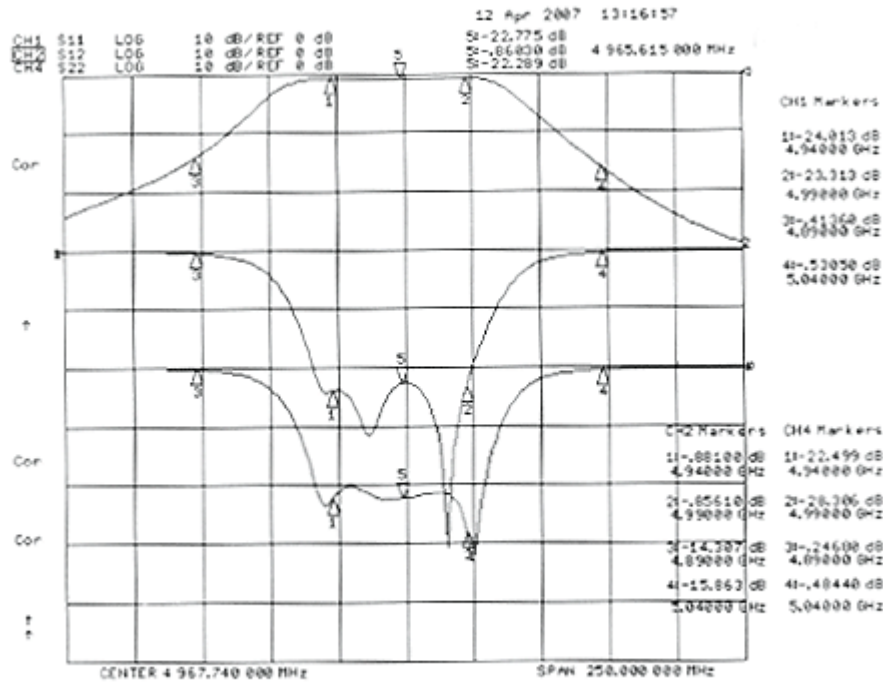
The HyperLink 4.9 GHz 4-Pole Ultra-High Q full band channel filter is ideal for co-located equipment installations. This filter is designed for full band applications. By reducing interference outside the 4.9 GHz band, improved performance of co-located equipment can be achieved. These bandpass filters are wide enough to pass high data rate signals without degradation. The BPF4900A features rugged aluminum weatherproof construction and can be used indoors or outdoor.

Specifications


Center Frequencies	4965 MHz
Out of Band Rejection	> 6 dB @ 4890 MHz > 6 dB @ 5040 MHz
Bandwidth	50 MHz
Insertion Loss	< 1.0 dB nominal
Passband Ripple	≤ 1.0 dB
Return Loss	≥ 10 dB
Impedance	50 Ohm
Power Handling	50 Watts
Connectors	(2) N-Female
Number of Cavities	4
Operating Temperature	-40° F to 185° F (-40° C to +85° C)
Dimensions	2.3" x 2.3" x 1.1" (60 x 60 x 30 mm)
Weight	0.69 lbs. (0.31 Kg)
RoHS Compliant	Yes

Insertion Loss / Return Loss Plots

Model: BPF4900A



Optional Mast Mounting Kit

Model	Description
 HGX-PMT14	Mast Mounting Kit for HyperLink outdoor filters. For mounting to 1-1/4" (31.7mm) to 2" (51mm) dia. masts. This kit contains an aluminum mounting bracket, zinc plated steel 1/4-20 x 2" u-bolt with serrated flange nuts and filter mounting hardware.

Guaranteed Quality

This product is backed by L-com's Limited Warranty.