



Active Optical Cable QSFP28 100Gbps, 3m, MSA Compatible

Active Optical Cables Technical Data Sheet

AOCQP28100-003

Features

- Full-Duplex 4 channel parallel active optical cable, supporting 100 Gbps links
- Up to 28 Gbps Data rate per channel
- Maximum link length of 10m available
- High Reliability 850 nm VCSEL technology
- Electrical interface compliant to SFF-8636 MSA
- Case Operating temperature range: 0°C to 70°C
- Power dissipation < 2.5W per cable end

Applications

- 100G Ethernet Data Center Intra-Rack and Inter-Rack links
- Infiniband QDR
- HPC Interconnections

Description

The AOCQP28100-003 is an active optical cable designed for use in 100Gigabit Ethernet links. They are electrically compliant and mechanically compliant with the QSFP28 MSA. The AOCQP28100-003 allows for greater link length than direct attach cables, with a lower total power consumption than transceiver solutions.

QSFP28+ Absolute Maximum Ratings

Parameter	Symbol	Min.	Typ.	Max.	Unit	Note
Storage Temperature	Ts	-40	-	85	°C	
Relative Humidity	RH	5	-	95	%	
Power Supply Voltage	VCC	-0.3	-	4	V	
Signal Input Voltage		Vcc-0.3	-	Vcc+0.3	V	

QSFP28+ Recommended Operating Conditions

Parameter	Symbol	Min.	Typ.	Max.	Unit	Note
Case Operating Temperature	Tcase	0	-	70	°C	Without air flow
Power Supply Voltage	VCC	3.14	3.3	3.46	V	
Power Supply Current	ICC	-		750	mA	per cable end
Data Rate	BR		25.78125		Gbps	Each channel

Click the following link (or enter part number in "SEARCH" on website) to obtain additional part information including price, inventory and certifications: [Active Optical Cable QSFP28 100Gbps, 3m, MSA Compatible AOCQP28100-003](#)



Active Optical Cable QSFP28 100Gbps, 3m, MSA Compatible

Active Optical Cables Technical Data Sheet

AOCQP28100-003

QSFP28+ General Product Characteristics

Parameter	Value	Unit	Notes
Module Form Factor	QSFP28		
Number of Lanes	4 Tx /Rx		
Maximum Aggregate Data Rate	111.8	Gb/s	
Maximum Data Rate per Lane	27.952	Gb/s	
Standard Cable Lengths	3, 5, 7, 10	meters	Other lengths, please contact sales
Protocols Supported	Typical applications include Infiniband, Fiber Channel, 100G Ethernet		
Electrical Interface and Pin-out	38-pin edge connector		Pin-out as defined by the QSFP28 MSA
Standard Optical Cable Type	Multimode ribbon fiber cable assembly, riser-rated		
Maximum Power Consumption per End	2.5	W	
Management Interface	Serial, I2C-based, 400 kHz maximum frequency		As defined by the QSFP28 MSA

Note: 100G Ethernet & 100GBASE-SR4 and ITU-T OTU4 has different register setting , not auto-Negotiation

Click the following link (or enter part number in "SEARCH" on website) to obtain additional part information including price, inventory and certifications: [Active Optical Cable QSFP28 100Gbps, 3m, MSA Compatible AOCQP28100-003](#)



Active Optical Cable QSFP28 100Gbps, 3m, MSA Compatible

Active Optical Cables Technical Data Sheet

AOCQP28100-003

QSFP28+ High-speed Electrical Characteristics per Lane

Parameter-Inputs	Symbol	Min	Typ	Max	Unit	NOTE	
Input electrical specifications (per Lane)							
Differential Voltage pk-pk				900	mV		
Common Mode Noise RMS				17.5	mV		
Differential Termination Resistance Mismatch				10	%		
Differential Return Loss	SDD22	Per OIF CEI-28G-VSR and CAUI-4 requirements					
Common Mode to Differential conversion and Differential to Common Mode Conversion	SDC22, SCD22					dB	
						dB	
Common Mode Return Loss	SCC22					dB	
Transition Time, 20 to 80%	Tr, Tf	10			ps		
Common Mode Voltage	Vcm	-0.3		2.8	V		
Eye Width at 1E-15 probability	EW15	0.46			UI		
Eye Height at 1E-15 probability	EH15	94			mV		

QSFP28+ High-speed Electrical Characteristics per Lane

Output electrical specifications (per Lane)							
Differential Voltage pk-pk				900	mV		
Common Mode Voltage	Vcm	-350		2850	mV		
Common Mode Noise RMS				17.5	mV		
Differential Termination Resistance Mismatch				10	%		
Differential Return Loss	SDD22	Per OIF CEI-28G-VSR and CAUI-4 requirements				dB	
Common Mode to Differential conversion and Differential to Common Mode Conversion	SDC22, SCD22					dB	
						dB	
Common Mode Return Loss	SCC22					dB	
Output Rise and Fall time (20% to 80%)	tRH, tFH	9.5			ps		
Vertical Eye Closure	VEC			5.5	dB		
Eye Width at 1E-15 probability	EW15	0.57			UI		

Click the following link (or enter part number in "SEARCH" on website) to obtain additional part information including price, inventory and certifications: [Active Optical Cable QSFP28 100Gbps, 3m, MSA Compatible AOCQP28100-003](#)



Active Optical Cable QSFP28 100Gbps, 3m, MSA Compatible

Active Optical Cables Technical Data Sheet

AOCQP28100-003

Mechanical Specifications

Length 118.11 in [300 cm]

Environmental Specifications

QSFP28

Temperature (Operational) +0C to +70C

Temperature (Storage) -40C to +85C

Relative Humidity 5% to 95%

Compliance Certifications

RoHS Compliant Yes

All trademarks, service marks, registered marks, or registered service marks are the property of their respective owners, and do not imply any affiliation with L-com or Infinite Electronics

Our portfolio includes cable assemblies, connectors, adapters and custom products, as well as their wireless product line which includes antennas, RF amplifiers, coaxial lightning and surge protectors, and NEMA rated enclosures.

Click the following link (or enter part number in "SEARCH" on website) to obtain additional part information including price, inventory and certifications: [Active Optical Cable QSFP28 100Gbps, 3m, MSA Compatible AOCQP28100-003](https://www.l-com.com/active-optical-cable-qsfp28-100gbps-3m-msa-compatible-aocqp28100-003)

URL: <https://www.l-com.com/active-optical-cable-qsfp28-100gbps-3m-msa-compatible-aocqp28100-003-p.aspx>

The information contained in this document is accurate to the best of our knowledge and representative of the part described herein. It may be necessary to make modifications to the part and/or the documentation of the part, in order to implement improvements. L-com reserves the right to make such changes as required. Unless otherwise stated, all specifications are nominal. L-com does not make any representation or warranty regarding the suitability of the part described herein for any particular purpose, and L-com does not assume any liability arising out of the use of any part or documentation.

Click the following link (or enter part number in "SEARCH" on website) to obtain additional part information including price, inventory and certifications: [Active Optical Cable QSFP28 100Gbps, 3m, MSA Compatible AOCQP28100-003](https://www.l-com.com/active-optical-cable-qsfp28-100gbps-3m-msa-compatible-aocqp28100-003)

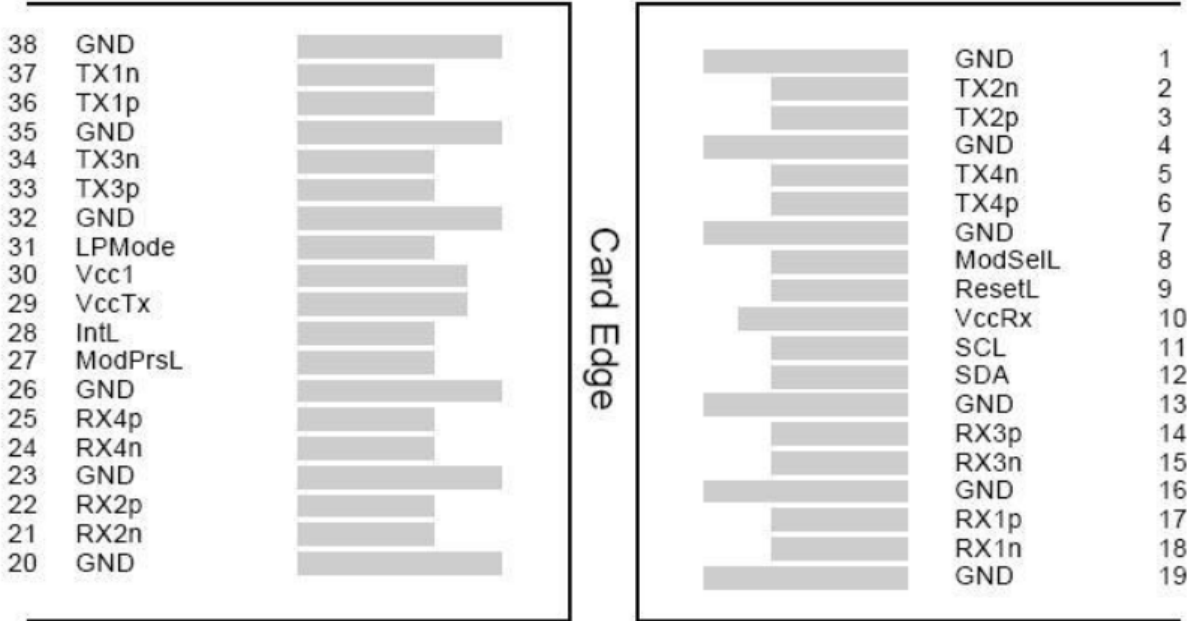


Active Optical Cable QSFP28 100Gbps, 3m, MSA Compatible

Active Optical Cables Technical Data Sheet

AOCQP28100-003

QSFP28+ Pin Assignment



Top Side

Bottom Side

Pin out of Connector Block on Host Board

Click the following link (or enter part number in "SEARCH" on website) to obtain additional part information including price, inventory and certifications: [Active Optical Cable QSFP28 100Gbps, 3m, MSA Compatible AOCQP28100-003](#)



Active Optical Cable QSFP28 100Gbps, 3m, MSA Compatible

Active Optical Cables Technical Data Sheet

AOCQP28100-003

QSFP28+ Pin Assignment Table

Pin	Symbol	Name/Description	NOTE
1	GND	Transmitter Ground (Common with Receiver Ground)	1
2	Tx2n	Transmitter Inverted Data Input	
3	Tx2p	Transmitter Non-Inverted Data output	
4	GND	Transmitter Ground (Common with Receiver Ground)	1
5	Tx4n	Transmitter Inverted Data Input	
6	Tx4p	Transmitter Non-Inverted Data output	
7	GND	Transmitter Ground (Common with Receiver Ground)	1
8	ModSelL	Module Select	
9	ResetL	Module Reset	
10	VccRx	3.3V Power Supply Receiver	2
11	SCL	2-Wire serial Interface Clock	
12	SDA	2-Wire serial Interface Data	
13	GND	Transmitter Ground (Common with Receiver Ground)	
14	Rx3p	Receiver Non-Inverted Data Output	
15	Rx3n	Receiver Inverted Data Output	
16	GND	Transmitter Ground (Common with Receiver Ground)	1
17	Rx1p	Receiver Non-Inverted Data Output	
18	Rx1n	Receiver Inverted Data Output	
19	GND	Transmitter Ground (Common with Receiver Ground)	1
20	GND	Transmitter Ground (Common with Receiver Ground)	1
21	Rx2n	Receiver Inverted Data Output	
22	Rx2p	Receiver Non-Inverted Data Output	
23	GND	Transmitter Ground (Common with Receiver Ground)	1
24	Rx4n	Receiver Inverted Data Output	1
25	Rx4p	Receiver Non-Inverted Data Output	
26	GND	Transmitter Ground (Common with Receiver Ground)	1
27	ModPrsl	Module Present	
28	IntL	Interrupt	
29	VccTx	3.3V power supply transmitter	2
30	Vcc1	3.3V power supply	2
31	LPMODE	Low Power Mode, not connect	
32	GND	Transmitter Ground (Common with Receiver Ground)	1
33	Tx3p	Transmitter Non-Inverted Data Input	
34	Tx3n	Transmitter Inverted Data Output	
35	GND	Transmitter Ground (Common with Receiver Ground)	1
36	Tx1p	Transmitter Non-Inverted Data Input	
37	Tx1n	Transmitter Inverted Data Output	
38	GND	Transmitter Ground (Common with Receiver Ground)	1

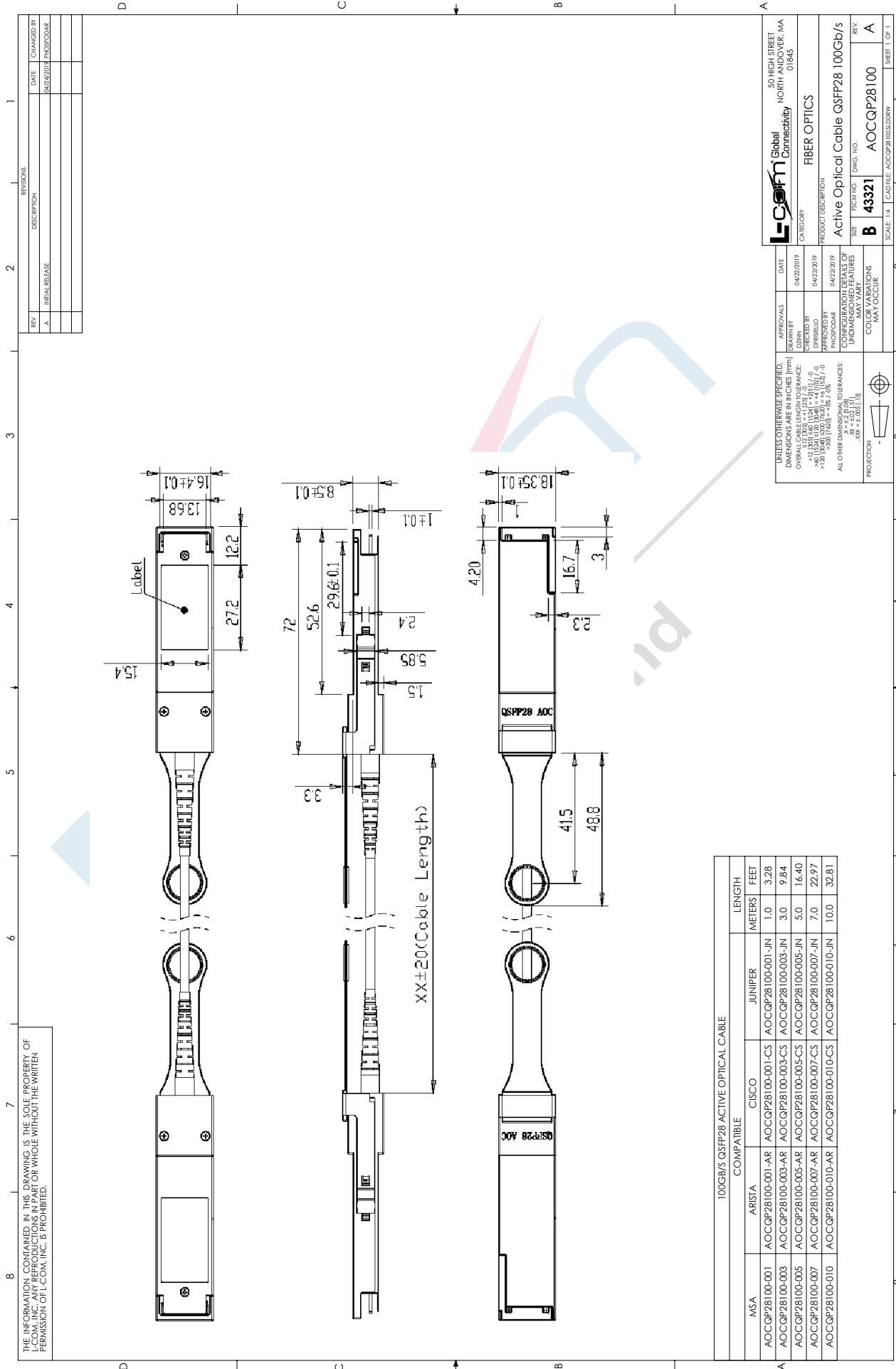
Notes:

1. GND is the symbol for signal and supply (power) common for QSFP+ modules. All are common within the QSFP+ module and all module voltages are referenced to this potential unless otherwise noted. Connect these directly to the host board signal common ground plane.

2. VccRx, Vcc1 and VccTx are the receiving and transmission power suppliers and shall be applied concurrently. Recommended host board power supply filtering is shown below. Vcc Rx, Vcc1 and Vcc Tx may be internally connected within the QSFP28 transceiver module in any combination. The connector pins are each rated for a maximum current of 500mA.

AOCQP28100-003 CAD Drawing

Active Optical Cable QSFP28 100Gbps, 3m, MSA Compatible



THE INFORMATION CONTAINED IN THIS DRAWING IS THE SOLE PROPERTY OF L-COM, INC. ANY REPRODUCTIONS IN PART OR WHOLE WITHOUT THE WRITTEN PERMISSION OF L-COM, INC. IS PROHIBITED.

REV	INITIAL RELEASE	DESCRIPTION	REVISIONS	DATE	CHANGED BY
A				03/24/2019	PHOSKODAR

		50 HIGH STREET NORTH ANDOVER, MA 01845	
CATEGORY: FIBER OPTICS		PRODUCT DESCRIPTION: Active Optical Cable QSFP28 100Gb/s	
DATE: 04/22/2019	APPROVALS:	DWG. NO: B 43321	REV: A
DRAWN BY: J. DUBIN	CHECKED BY: PHOSKODAR	CONFIGURATION DETAILS OF UNUSUAL FEATURES MAY VARY	COLOR VARIATIONS MAY OCCUR
EXPOSED BY: PHOSKODAR	APPROVED BY: PHOSKODAR	SCALE: 1:1	
UNLESS OTHERWISE SPECIFIED, DIMENSIONS ARE IN INCHES (MM)		SHEET 14 OF 14	
OVERALL LENGTH TOLERANCE:	0.000 - 0.005	CAPFILE: AOCQP281003.DWG	
0.005 - 0.010	0.005 - 0.010	SHEET 1 OF 1	
0.010 - 0.020	0.010 - 0.020		
0.020 - 0.050	0.020 - 0.050		
0.050 - 0.100	0.050 - 0.100		
0.100 - 0.200	0.100 - 0.200		
0.200 - 0.500	0.200 - 0.500		
0.500 - 1.000	0.500 - 1.000		
1.000 - 2.000	1.000 - 2.000		
2.000 - 5.000	2.000 - 5.000		
5.000 - 10.000	5.000 - 10.000		
10.000 - 20.000	10.000 - 20.000		
20.000 - 50.000	20.000 - 50.000		
50.000 - 100.000	50.000 - 100.000		
100.000 - 200.000	100.000 - 200.000		
200.000 - 500.000	200.000 - 500.000		
500.000 - 1000.000	500.000 - 1000.000		
1000.000 - 2000.000	1000.000 - 2000.000		
2000.000 - 5000.000	2000.000 - 5000.000		
5000.000 - 10000.000	5000.000 - 10000.000		
10000.000 - 20000.000	10000.000 - 20000.000		
20000.000 - 50000.000	20000.000 - 50000.000		
50000.000 - 100000.000	50000.000 - 100000.000		
100000.000 - 200000.000	100000.000 - 200000.000		
200000.000 - 500000.000	200000.000 - 500000.000		
500000.000 - 1000000.000	500000.000 - 1000000.000		
1000000.000 - 2000000.000	1000000.000 - 2000000.000		
2000000.000 - 5000000.000	2000000.000 - 5000000.000		
5000000.000 - 10000000.000	5000000.000 - 10000000.000		
10000000.000 - 20000000.000	10000000.000 - 20000000.000		
20000000.000 - 50000000.000	20000000.000 - 50000000.000		
50000000.000 - 100000000.000	50000000.000 - 100000000.000		
100000000.000 - 200000000.000	100000000.000 - 200000000.000		
200000000.000 - 500000000.000	200000000.000 - 500000000.000		
500000000.000 - 1000000000.000	500000000.000 - 1000000000.000		
1000000000.000 - 2000000000.000	1000000000.000 - 2000000000.000		
2000000000.000 - 5000000000.000	2000000000.000 - 5000000000.000		
5000000000.000 - 10000000000.000	5000000000.000 - 10000000000.000		
10000000000.000 - 20000000000.000	10000000000.000 - 20000000000.000		
20000000000.000 - 50000000000.000	20000000000.000 - 50000000000.000		
50000000000.000 - 100000000000.000	50000000000.000 - 100000000000.000		
100000000000.000 - 200000000000.000	100000000000.000 - 200000000000.000		
200000000000.000 - 500000000000.000	200000000000.000 - 500000000000.000		
500000000000.000 - 1000000000000.000	500000000000.000 - 1000000000000.000		
1000000000000.000 - 2000000000000.000	1000000000000.000 - 2000000000000.000		
2000000000000.000 - 5000000000000.000	2000000000000.000 - 5000000000000.000		
5000000000000.000 - 10000000000000.000	5000000000000.000 - 10000000000000.000		
10000000000000.000 - 20000000000000.000	10000000000000.000 - 20000000000000.000		
20000000000000.000 - 50000000000000.000	20000000000000.000 - 50000000000000.000		
50000000000000.000 - 100000000000000.000	50000000000000.000 - 100000000000000.000		
100000000000000.000 - 200000000000000.000	100000000000000.000 - 200000000000000.000		
200000000000000.000 - 500000000000000.000	200000000000000.000 - 500000000000000.000		
500000000000000.000 - 1000000000000000.000	500000000000000.000 - 1000000000000000.000		
1000000000000000.000 - 2000000000000000.000	1000000000000000.000 - 2000000000000000.000		
2000000000000000.000 - 5000000000000000.000	2000000000000000.000 - 5000000000000000.000		
5000000000000000.000 - 10000000000000000.000	5000000000000000.000 - 10000000000000000.000		
10000000000000000.000 - 20000000000000000.000	10000000000000000.000 - 20000000000000000.000		
20000000000000000.000 - 50000000000000000.000	20000000000000000.000 - 50000000000000000.000		
50000000000000000.000 - 100000000000000000.000	50000000000000000.000 - 100000000000000000.000		
100000000000000000.000 - 200000000000000000.000	100000000000000000.000 - 200000000000000000.000		
200000000000000000.000 - 500000000000000000.000	200000000000000000.000 - 500000000000000000.000		
500000000000000000.000 - 1000000000000000000.000	500000000000000000.000 - 1000000000000000000.000		
1000000000000000000.000 - 2000000000000000000.000	1000000000000000000.000 - 2000000000000000000.000		
2000000000000000000.000 - 5000000000000000000.000	2000000000000000000.000 - 5000000000000000000.000		
5000000000000000000.000 - 10000000000000000000.000	5000000000000000000.000 - 10000000000000000000.000		
10000000000000000000.000 - 20000000000000000000.000	10000000000000000000.000 - 20000000000000000000.000		
20000000000000000000.000 - 50000000000000000000.000	20000000000000000000.000 - 50000000000000000000.000		
50000000000000000000.000 - 100000000000000000000.000	50000000000000000000.000 - 100000000000000000000.000		
100000000000000000000.000 - 200000000000000000000.000	100000000000000000000.000 - 200000000000000000000.000		
200000000000000000000.000 - 500000000000000000000.000	200000000000000000000.000 - 500000000000000000000.000		
500000000000000000000.000 - 1000000000000000000000.000	500000000000000000000.000 - 1000000000000000000000.000		
1000000000000000000000.000 - 2000000000000000000000.000	1000000000000000000000.000 - 2000000000000000000000.000		
2000000000000000000000.000 - 5000000000000000000000.000	2000000000000000000000.000 - 5000000000000000000000.000		
5000000000000000000000.000 - 10000000000000000000000.000	5000000000000000000000.000 - 10000000000000000000000.000		
10000000000000000000000.000 - 20000000000000000000000.000	10000000000000000000000.000 - 20000000000000000000000.000		
20000000000000000000000.000 - 50000000000000000000000.000	20000000000000000000000.000 - 50000000000000000000000.000		
50000000000000000000000.000 - 100000000000000000000000.000	50000000000000000000000.000 - 100000000000000000000000.000		
100000000000000000000000.000 - 200000000000000000000000.000	100000000000000000000000.000 - 200000000000000000000000.000		
200000000000000000000000.000 - 500000000000000000000000.000	200000000000000000000000.000 - 500000000000000000000000.000		
500000000000000000000000.000 - 1000000000000000000000000.000	500000000000000000000000.000 - 1000000000000000000000000.000		
1000000000000000000000000.000 - 2000000000000000000000000.000	1000000000000000000000000.000 - 2000000000000000000000000.000		
2000000000000000000000000.000 - 5000000000000000000000000.000	2000000000000000000000000.000 - 5000000000000000000000000.000		
5000000000000000000000000.000 - 10000000000000000000000000.000	5000000000000000000000000.000 - 10000000000000000000000000.000		
10000000000000000000000000.000 - 20000000000000000000000000.000	10000000000000000000000000.000 - 20000000000000000000000000.000		
20000000000000000000000000.000 - 50000000000000000000000000.000	20000000000000000000000000.000 - 50000000000000000000000000.000		
50000000000000000000000000.000 - 100000000000000000000000000.000	50000000000000000000000000.000 - 100000000000000000000000000.000		
100000000000000000000000000.000 - 200000000000000000000000000.000	100000000000000000000000000.000 - 200000000000000000000000000.000		
200000000000000000000000000.000 - 500000000000000000000000000.000	200000000000000000000000000.000 - 500000000000000000000000000.000		
500000000000000000000000000.000 - 1000000000000000000000000000.000	500000000000000000000000000.000 - 1000000000000000000000000000.000		
1000000000000000000000000000.000 - 2000000000000000000000000000.000	1000000000000000000000000000.000 - 2000000000000000000000000000.000		
2000000000000000000000000000.000 - 5000000000000000000000000000.000	2000000000000000000000000000.000 - 5000000000000000000000000000.000		
5000000000000000000000000000.000 - 10000000000000000000000000000.000	5000000000000000000000000000.000 - 10000000000000000000000000000.000		
10000000000000000000000000000.000 - 20000000000000000000000000000.000	10000000000000000000000000000.000 - 20000000000000000000000000000.000		
20000000000000000000000000000.000 - 50000000000000000000000000000.000	20000000000000000000000000000.000 - 50000000000000000000000000000.000		
50000000000000000000000000000.000 - 100000000000000000000000000000.000	50000000000000000000000000000.000 - 100000000000000000000000000000.000		
100000000000000000000000000000.000 - 200000000000000000000000000000.000	100000000000000000000000000000.000 - 200000000000000000000000000000.000		
200000000000000000000000000000.000 - 500000000000000000000000000000.000	200000000000000000000000000000.000 - 500000000000000000000000000000.000		
500000000000000000000000000000.000 - 1000000000000000000000000000000.000	500000000000000000000000000000.000 - 1000000000000000000000000000000.000		
1000000000000000000000000000000.000 - 2000000000000000000000000000000.000			