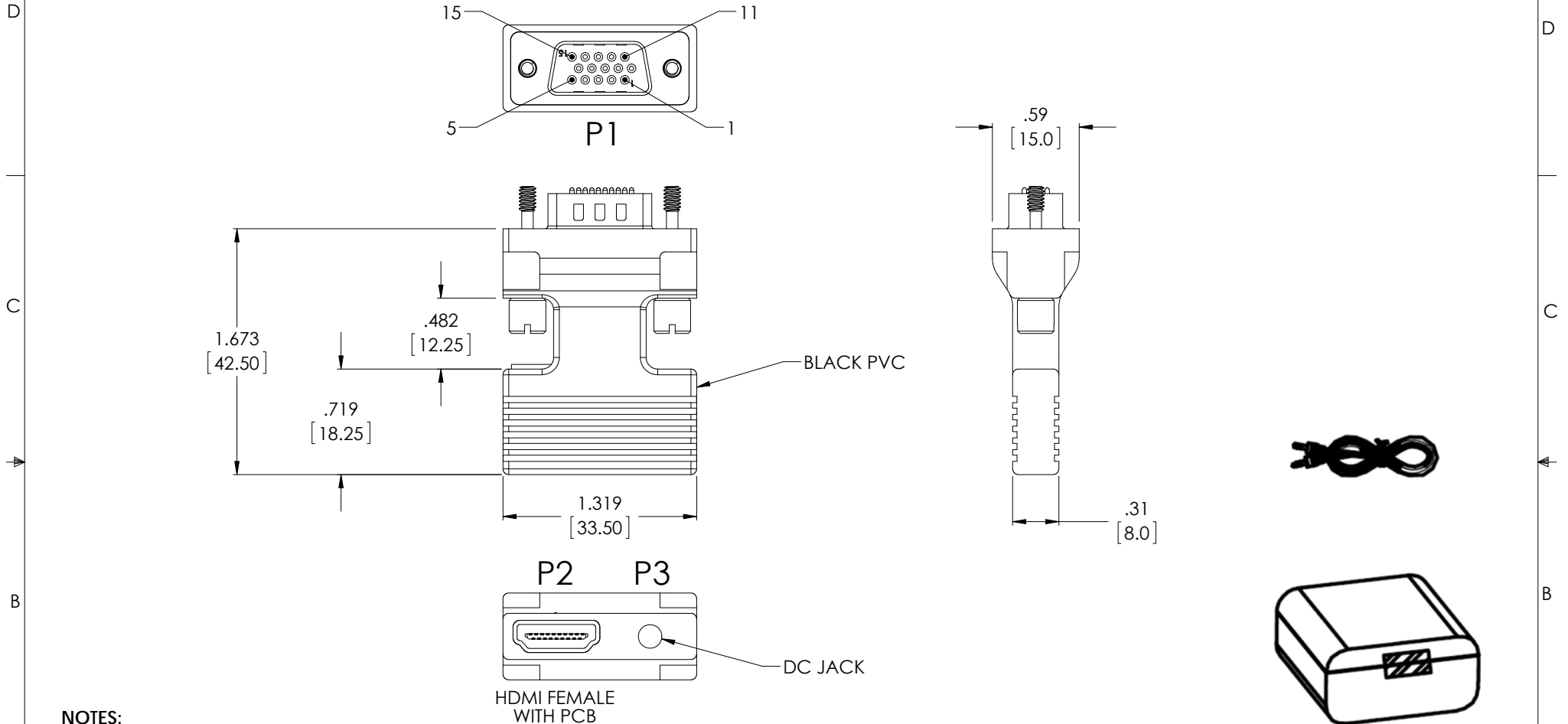


THE INFORMATION CONTAINED IN THIS DRAWING IS THE SOLE PROPERTY OF L-COM, INC. ANY REPRODUCTION IN PART OR WHOLE WITHOUT THE WRITTEN PERMISSION OF L-COM, INC. IS PROHIBITED.

REVISIONS			
REV	DESCRIPTION	DATE	APPROVED
A	INITIAL RELEASE	6/13/17	R.CLARK



NOTES:

ELECTRICAL PROPERTIES:

1. CABLE ASSEMBLY SHALL BE TESTED FOR CONTINUITY
2. VOLTAGE TEST: DC 300V 10ms
INSULATION RESISTANCE: 10.0M ohm/min
CONDUCTANCE RESISTANCE: 2.0 ohm/max

MISCELLANEOUS:

1. ALL DIMENSIONS ARE FOR REFERENCE ONLY AND ARE "mm" EXCEPT WHERE SPECIFIED.
2. CABLE ASSEMBLY SHALL BE INDIVIDUALLY PACKAGED IN ACCORDANCE WITH L-COM SPECIFICATION PS-0031.

REGULATORY COMPLIANCE:

CE 2011/65/EU (RoHS DIRECTIVE)

UNLESS OTHERWISE SPECIFIED, DIMENSIONS ARE IN INCHES [mm] OVERALL CABLE LENGTH TOLERANCE: ≤12 [305] = +1 [25] / -0 >12 [305] ≤60 [1524] = +2 [51] / -0 >60 [1524] ≤120 [3048] = +4 [102] / -0 >120 [3048] ≤300 [7620] = +6 [152] / -0 >300 [7620] = +5% / -0%	APPROVALS	DATE	50 HIGH STREET NORTH ANDOVER, MA 01845	
	DRAWN BY R.CLARK	6/13/17		
ALL OTHER DIMENSIONAL TOLERANCES: .X = ± .2 [5.08] .XX = ± .02 [1.51] .XXX = ± .005 [1.13]	CHECKED BY B.GATES	6/14/17	PRODUCT DESCRIPTION	
	APPROVED BY B.GATES	6/14/17	HDMI F TO VGA M ADAPTOR	
PROJECTION	CONFIGURATION DETAILS OF UNDIMENSIONED FEATURES MAY VARY	COLOR VARIATIONS MAY OCCUR	SIZE A	FSCM NO. 43321
			DWG. NO. VHC00020	REV. A
			SCALE: NONE	CAD FILE: VHC00020.SLDDRW
				SHEET 1 OF 1