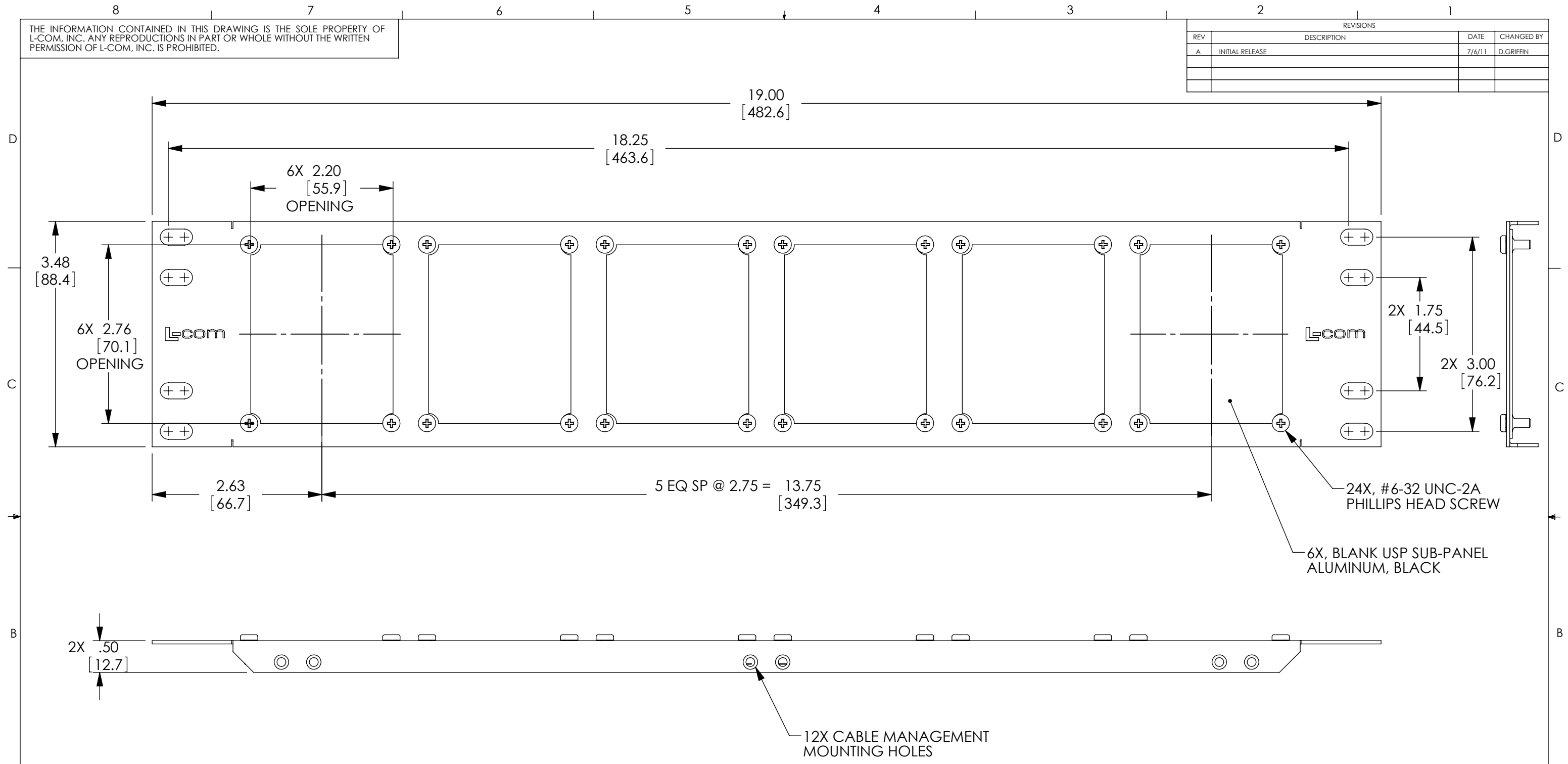


THE INFORMATION CONTAINED IN THIS DRAWING IS THE SOLE PROPERTY OF L-COM, INC. ANY REPRODUCTIONS IN PART OR WHOLE WITHOUT THE WRITTEN PERMISSION OF L-COM, INC. IS PROHIBITED.

| REVISIONS | | | |
|-----------|-----------------|--------|------------|
| REV | DESCRIPTION | DATE | CHANGED BY |
| A | INITIAL RELEASE | 7/6/11 | D.GRIFFIN |
| | | | |
| | | | |



- NOTES:**
1. MATERIAL: .06 THICK COLD ROLLED STEEL.
 2. PANEL FINISH: FLAT BLACK POWDER COAT.
 3. SILKSCREEN COLOR: WHITE.
 4. PANEL IS SHIPPED WITH 6X SUB-PANELS AND HARDWARE NOT ASSEMBLED.
 5. PANEL SHALL BE PACKAGED IN ACCORDANCE WITH L-COM SPECIFICATION PS-0014.

RoHS Compliant ✓

| | | | |
|---|--|----------------------------|--|
| UNLESS OTHERWISE SPECIFIED, DIMENSIONS ARE IN INCHES [mm] | APPROVALS | DATE | Global Connectivity 45 BEECHWOOD DRIVE NORTH ANDOVER, MA 01845 |
| | DRAWN BY D. CASTRO | 7/6/11 | |
| | CHECKED BY D. PARHAM | 7/6/11 | |
| | APPROVED BY M. MARTINEZ | 7/6/11 | |
| DIMENSIONAL TOLERANCES: .X = ±.1 .XX = ±.02 .XXX = ±.005 | CONFIGURATION DETAILS OF UNDIMENSIONED FEATURES MAY VARY | | CATEGORY RACK PANEL |
| ANGULAR TOLERANCES: ALL = ± 1° | COLOR VARIATIONS MAY OCCUR | | PRODUCT DESCRIPTION 3.5"X19" PANEL KIT W/6 USP-AL |
| PROJECTION | SIZE B | FSCM NO. 43321 | DWG. NO. UPR-A-KIT |
| | SCALE: 1:1 | CAD FILE: UPR-A-KIT.SLDDRW | REV. A |