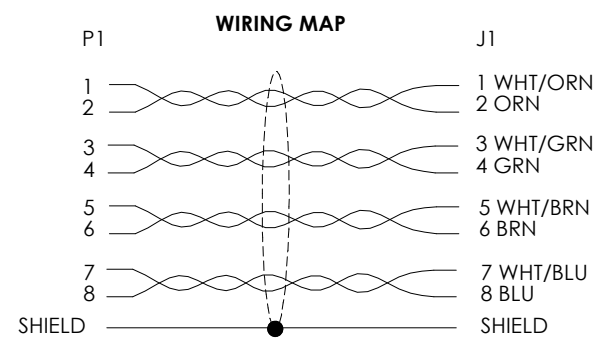
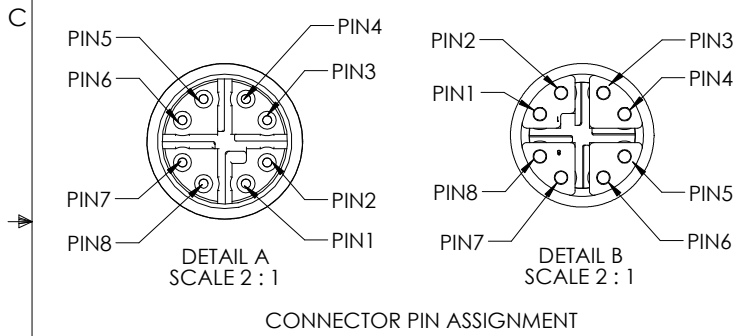
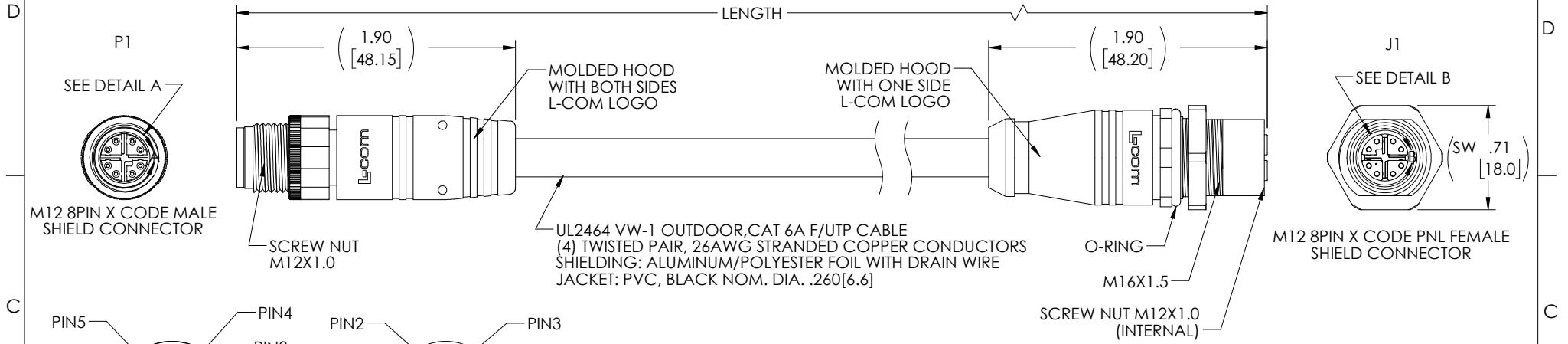


THE INFORMATION CONTAINED IN THIS DRAWING IS THE SOLE PROPERTY OF L-COM, INC. ANY REPRODUCTION IN PART OR WHOLE WITHOUT THE WRITTEN PERMISSION OF L-COM, INC. IS PROHIBITED.

REVISIONS			
REV	DESCRIPTION	DATE	APPROVED
A	INITIAL RELEASE	01/19/2023	GUTTADAURO



PART NUMBER	LENGTH	
	METERS	FEET
TRG626-C6B-05M	0.5	1.64
TRG626-C6B-1M	1.0	3.28
TRG626-C6B-2M	2.0	6.56
TRG626-C6B-3M	3.0	9.84
TRG626-C6B-5M	5.0	16.41
TRG626-C6B-10M	10.0	32.81
TRG626-C6B-15M	15.0	49.22

NOTES

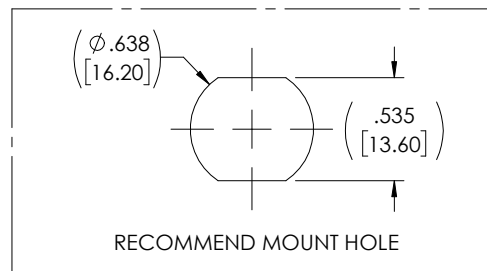
MATERIAL:
MOLDED HOOD: PVC, BLACK, UV RESISTANCE
INSULATOR: NYLON, BLACK
SHELL/SCREW NUT: BRASS, NICKEL PLATE
CONTACTS: PHOSPHOR BRONZE, 15" MIN. GOLD PLATE
O-RING: VITON

ELECTRICAL:
VOLTAGE RATING: 48V AC/DC
CURRENT RATING: 0.5A

APPLICATION:
INGRESS PROTECTION RATING IS IP67(MATED)

ENVIRONMENTAL:
OPERATING TEMPERATURE RANGE: -20°C TO +80°C
CABLE JACKET: UV RESISTANCE

MISCELLANEOUS
CABLE ASSEMBLIES TO BE TESTED FOR CONTINUITY WIRED TO IEC 61076-2-109 STANDARDS
CABLE ASSEMBLY SHALL BE INDIVIDUALLY PACKAGED IN ACCORDANCE WITH L-COM SPECIFICATION PS-0031.



UNLESS OTHERWISE SPECIFIED, DIMENSIONS ARE IN INCHES [mm] OVERALL CABLE LENGTH TOLERANCE: ≤12 [305] = +1 [25] / -0 >12 [305] ≤60 [1524] = +2 [51] / -0 >60 [1524] ≤120 [3048] = +4 [102] / -0 >120 [3048] ≤300 [7620] = +6 [152] / -0 >300 [7620] = +5% / -0 ALL OTHER DIMENSIONAL TOLERANCES: .X = ± .2 [5] FRACTIONS ± 1/32 .XX = ± .02 [5] ANGLES ± 1° .XXX = ± .005 [1.3]	APPROVALS	DATE
	DRAWN BY BZHANG	10/10/22
	CHECKED BY DFRISIELLO	10/10/22
	APPROVED BY GUTTADAURO	10/10/22
THIRD-ANGLE PROJECTION	CONFIGURATION DETAILS OF UNDIMENSIONED FEATURES MAY VARY	COLOR VARIATIONS MAY OCCUR

L-com
an INFINITO brand

50 High Street, West Mill, North Andover, MA 01845 USA.
Phone: 1.800.341.5266
1.978.682.6936

CATEGORY: TELECOM/MODULAR

PRODUCT DESCRIPTION: Cat6a M128X M/F PM F/UTP 26AWG OD PVC BLK

SIZE A	CAGE CODE 43321	DWG. NO. TRG626-C6B	REV. A
------------------	---------------------------	-------------------------------	------------------

SCALE: NONE | CAD FILE: TRG626-C6B.SLDDRW | SHEET 1 OF 1