

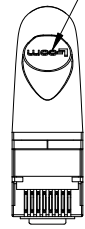
THE INFORMATION CONTAINED IN THIS DRAWING IS THE SOLE PROPERTY OF L-COM, INC. ANY REPRODUCTION IN PART OR WHOLE WITHOUT THE WRITTEN PERMISSION OF L-COM, INC. IS PROHIBITED.

REVISION					
ZONE	REV	DESCRIPTION	DATE	CHANGED BY	APPROVED
	A	INITIAL RELEASE	09/09/2024	BZHANG	WLI

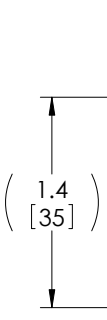
D

D

LOGO ONE SIDE



P1
RJ45 SHIELDED MODULAR PLUG
GOLD PLATED CONTACTS
(8P8C)

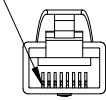


RIGHT ANGLE MOLDED BOOT
LSZH, COLOR: BLACK

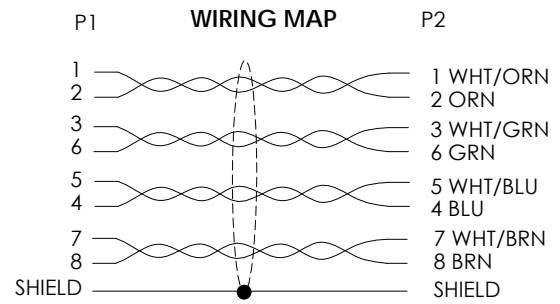
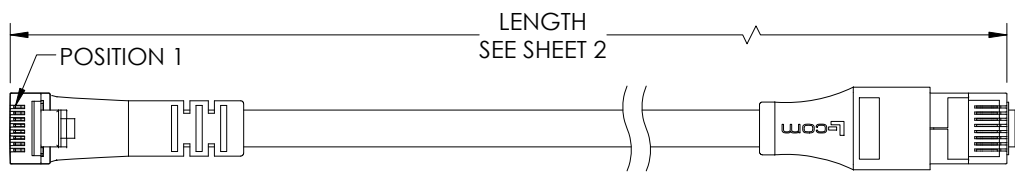
CAT 6a F/UTP SHIELDED CMX RATED CABLE
4 TWISTED PAIR, 26AWG STRANDED COPPER CONDUCTORS
WITH ALUMINIZED POLYESTER SHIELD AND STRANDED
TINNED COPPER DRAIN WIRE
JACKET: LOW SMOKE ZERO HALOGEN. COLOR: SEE SHEET 2
(TEMPERATURE RANGE: -20°C TO +75°C; NOM. DIA: .236 [6.0])

SNAGLESS BOOT WITH
BOTH SIDES LOGO,
LSZH, COLOR: BLACK

POSITION 1



P2
RJ45 SHIELDED MODULAR PLUG
GOLD PLATED CONTACTS
(8P8C)


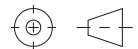


NOTES:

1. PLUG CONFORMS TO TIA-1096
2. CABLE ASSEMBLY SHALL BE TESTED FOR CONTINUITY.
3. CABLE ASSEMBLY SHALL BE INDIVIDUALLY PACKAGED IN ACCORDANCE WITH L-COM SPECIFICATION PS-0031.

LSZH CABLE CHARACTERISTICS:
FLAME RATING: IEC 60332-1
CORROSIVE GAS: IEC 60754
SMOKE EMISSION: IEC 61034

REGULATORY COMPLIANCE:
EU ROHS DIRECTIVE (MOST RECENT RELEASED VERSION)

UNLESS OTHERWISE SPECIFIED, DIMENSIONS ARE IN INCHES [mm] OVERALL CABLE LENGTH TOLERANCE: ≤12 [305] = +1 [25] / -0 >12 [305] ≤60 [1524] = +2 [51] / -0 >60 [1524] ≤120 [3048] = +4 [102] / -0 >120 [3048] ≤300 [7620] = +6 [152] / -0 >300 [7620] = +5% / -0 ALL OTHER DIMENSIONAL TOLERANCES: .X = ± .2 [5] FRACTIONS ± 1/32 .XX = ± .02 [.5] ANGLES ± 1° .XXX = ± .005 [.13]	APPROVALS	DATE	 50 High Street, West Mill, North Andover, MA 01845 USA. Phone: 1.800.341.5266 1.978.682.6936		
	DRAWN BY BZHANG	08/30/2024		CATEGORY TELECOM/MODULAR PRODUCT DESCRIPTION C6A F/UTP STR-DWN LSZH	
	CHECKED BY WLI	08/30/2024			
	APPROVED BY WLI	08/30/2024			
THIRD-ANGLE PROJECTION 	COLOR VARIATIONS MAY OCCUR	SIZE A	CAGE CODE 43321	ITEM NO. TRD695ASZRA1-xxM	REV. A
		SCALE: NONE	CAD FILE: TRD695ASZRA1-xxM.SLDDRW	SHEET 1 OF 2	

T-Rev.D1

THE INFORMATION CONTAINED IN THIS DRAWING IS THE SOLE PROPERTY OF L-COM, INC. ANY REPRODUCTION IN PART OR WHOLE WITHOUT THE WRITTEN PERMISSION OF L-COM, INC. IS PROHIBITED.

PART NUMBER	COLOR	LENGTH METERS[FEET]	PART NUMBER	COLOR	LENGTH METERS[FEET]
TRD695ASZRA1BLK-1M	BLACK	1.0 [3.28]	TRD695ASZRA1RED-1M	RED	1.0 [3.28]
TRD695ASZRA1BLK-2M	BLACK	2.0 [6.56]	TRD695ASZRA1RED-2M	RED	2.0 [6.56]
TRD695ASZRA1BLK-3M	BLACK	3.0 [9.84]	TRD695ASZRA1RED-3M	RED	3.0 [9.84]
TRD695ASZRA1BLK-5M	BLACK	5.0 [16.41]	TRD695ASZRA1RED-5M	RED	5.0 [16.41]
TRD695ASZRA1BLK-7M	BLACK	7.0 [22.97]	TRD695ASZRA1RED-7M	RED	7.0 [22.97]
TRD695ASZRA1GRY-1M	GRAY	1.0 [3.28]	TRD695ASZRA1BLU-1M	BLUE	1.0 [3.28]
TRD695ASZRA1GRY-2M	GRAY	2.0 [6.56]	TRD695ASZRA1BLU-2M	BLUE	2.0 [6.56]
TRD695ASZRA1GRY-3M	GRAY	3.0 [9.84]	TRD695ASZRA1BLU-3M	BLUE	3.0 [9.84]
TRD695ASZRA1GRY-5M	GRAY	5.0 [16.41]	TRD695ASZRA1BLU-5M	BLUE	5.0 [16.41]
TRD695ASZRA1GRY-7M	GRAY	7.0 [22.97]	TRD695ASZRA1BLU-7M	BLUE	7.0 [22.97]



50 High Street, West Mill,
North Andover, MA 01845 USA.
Phone: 1.800.341.5266
1.978.682.6936

CATEGORY TELECOM/MODULAR

PRODUCT DESCRIPTION C6A F/UTP STR-DWN LSZH

SIZE A	CAGE CODE 43321	ITEM NO. TRD695AZRA1-xxM	REV. A
------------------	---------------------------	-----------------------------	------------------

SCALE: NONE CAD FILE: TRD695ASZRA1-xxM.SLDDRW SHEET 2 OF 2