

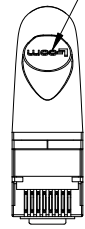
THE INFORMATION CONTAINED IN THIS DRAWING IS THE SOLE PROPERTY OF L-COM, INC. ANY REPRODUCTION IN PART OR WHOLE WITHOUT THE WRITTEN PERMISSION OF L-COM, INC. IS PROHIBITED.

REVISION					
ZONE	REV	DESCRIPTION	DATE	CHANGED BY	APPROVED
	A	INITIAL RELEASE	09/09/2024	BZHANG	WLI

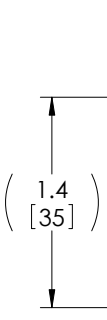
D

D

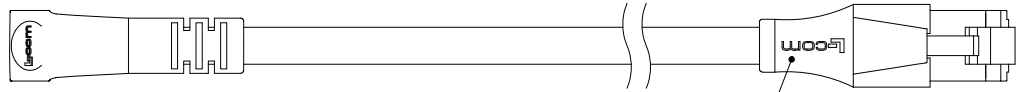
LOGO ONE SIDE



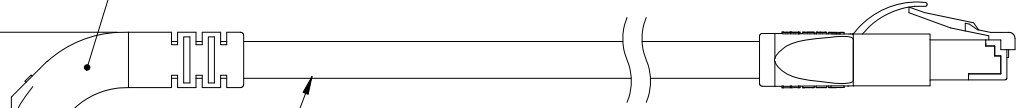
P1  
RJ45 SHIELDED MODULAR PLUG  
GOLD PLATED CONTACTS  
(8P8C)



RIGHT ANGLE MOLDED BOOT  
LSZH, COLOR: BLACK

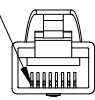


SNAGLESS BOOT WITH  
BOTH SIDES LOGO,  
LSZH, COLOR: BLACK

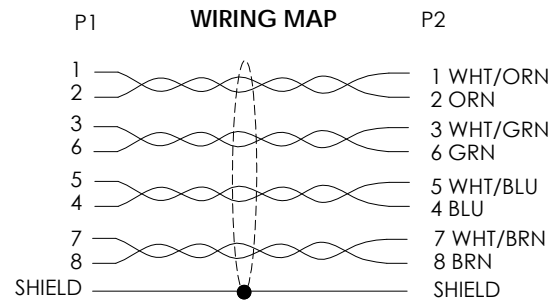
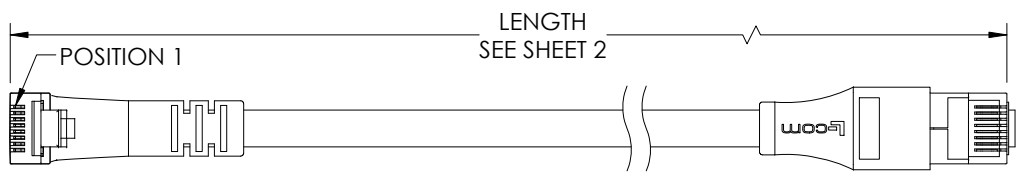


CAT 6a F/UTP SHIELDED CMX RATED CABLE  
4 TWISTED PAIR, 26AWG STRANDED COPPER CONDUCTORS  
WITH ALUMINIZED POLYESTER SHIELD AND STRANDED  
TINNED COPPER DRAIN WIRE  
JACKET: LOW SMOKE ZERO HALOGEN. COLOR: SEE SHEET 2  
(TEMPERATURE RANGE: -20°C TO +75°C; NOM. DIA: .236 [6.0])

POSITION 1



P2  
RJ45 SHIELDED MODULAR PLUG  
GOLD PLATED CONTACTS  
(8P8C)


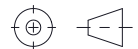


**NOTES:**

1. PLUG CONFORMS TO TIA-1096
2. CABLE ASSEMBLY SHALL BE TESTED FOR CONTINUITY.
3. CABLE ASSEMBLY SHALL BE INDIVIDUALLY PACKAGED IN ACCORDANCE WITH L-COM SPECIFICATION PS-0031.

**LSZH CABLE CHARACTERISTICS:**  
FLAME RATING: IEC 60332-1  
CORROSIVE GAS: IEC 60754  
SMOKE EMISSION: IEC 61034

**REGULATORY COMPLIANCE:**  
EU ROHS DIRECTIVE (MOST RECENT RELEASED VERSION)


UNLESS OTHERWISE SPECIFIED, DIMENSIONS ARE IN INCHES [mm]  OVERALL CABLE LENGTH TOLERANCE: ≤12 [305] = +1 [25] / -0 >12 [305] ≤60 [1524] = +2 [51] / -0 >60 [1524] ≤120 [3048] = +4 [102] / -0 >120 [3048] ≤300 [7620] = +6 [152] / -0 >300 [7620] = +5% / -0  ALL OTHER DIMENSIONAL TOLERANCES: .X = ± .2 [5]   FRACTIONS ± 1/32 .XX = ± .02 [.5]   ANGLES ± 1° .XXX = ± .005 [.13]	APPROVALS	DATE	 50 High Street, West Mill, North Andover, MA 01845 USA. Phone: 1.800.341.5266 1.978.682.6936
	DRAWN BY BZHANG	08/30/2024	
	CHECKED BY WLI	08/30/2024	
	APPROVED BY WLI	08/30/2024	
THIRD-ANGLE PROJECTION 	CONFIGURATION DETAILS OF UNDIMENSIONED FEATURES MAY VARY	CATEGORY <b>TELECOM/MODULAR</b>	
	COLOR VARIATIONS MAY OCCUR	PRODUCT DESCRIPTION <b>C6A F/UTP STR-DWN LSZH</b>	
	SIZE <b>A</b>	CAGE CODE <b>43321</b>	ITEM NO. <b>TRD695ASZRA1-xxM</b>
SCALE: NONE		CAD FILE: TRD695ASZRA1-xxM.SLDDRW	
			SHEET 1 OF 2

T-Rev.D1

8 7 6 5 4 3 2 1

THE INFORMATION CONTAINED IN THIS DRAWING IS THE SOLE PROPERTY OF L-COM, INC. ANY REPRODUCTION IN PART OR WHOLE WITHOUT THE WRITTEN PERMISSION OF L-COM, INC. IS PROHIBITED.

PART NUMBER	COLOR	LENGTH METERS[FEET]	PART NUMBER	COLOR	LENGTH METERS[FEET]
TRD695ASZRA1BLK-1M	BLACK	1.0 [3.28]	TRD695ASZRA1RED-1M	RED	1.0 [3.28]
TRD695ASZRA1BLK-2M	BLACK	2.0 [6.56]	TRD695ASZRA1RED-2M	RED	2.0 [6.56]
TRD695ASZRA1BLK-3M	BLACK	3.0 [9.84]	TRD695ASZRA1RED-3M	RED	3.0 [9.84]
TRD695ASZRA1BLK-5M	BLACK	5.0 [16.41]	TRD695ASZRA1RED-5M	RED	5.0 [16.41]
TRD695ASZRA1BLK-7M	BLACK	7.0 [22.97]	TRD695ASZRA1RED-7M	RED	7.0 [22.97]
TRD695ASZRA1GRY-1M	GRAY	1.0 [3.28]	TRD695ASZRA1BLU-1M	BLUE	1.0 [3.28]
TRD695ASZRA1GRY-2M	GRAY	2.0 [6.56]	TRD695ASZRA1BLU-2M	BLUE	2.0 [6.56]
TRD695ASZRA1GRY-3M	GRAY	3.0 [9.84]	TRD695ASZRA1BLU-3M	BLUE	3.0 [9.84]
TRD695ASZRA1GRY-5M	GRAY	5.0 [16.41]	TRD695ASZRA1BLU-5M	BLUE	5.0 [16.41]
TRD695ASZRA1GRY-7M	GRAY	7.0 [22.97]	TRD695ASZRA1BLU-7M	BLUE	7.0 [22.97]

		50 High Street, West Mill, North Andover, MA 01845 USA. Phone: 1.800.341.5266 1.978.682.6936	
CATEGORY <p style="text-align: center;"><b>TELECOM/MODULAR</b></p>			
PRODUCT DESCRIPTION <p style="text-align: center;"><b>C6A F/UTP STR-DWN LSZH</b></p>			
SIZE <b>A</b>	CAGE CODE <b>43321</b>	ITEM NO. <b>TRD695AZRA1-xxM</b>	REV. <b>A</b>
SCALE: NONE		CAD FILE: TRD695ASZRA1-xxM.SLDDRW	
			SHEET 2 OF 2