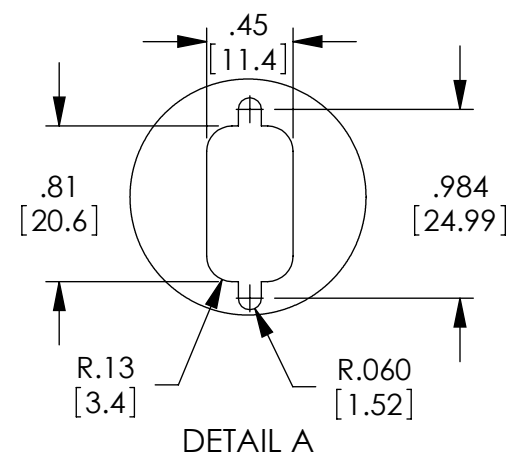
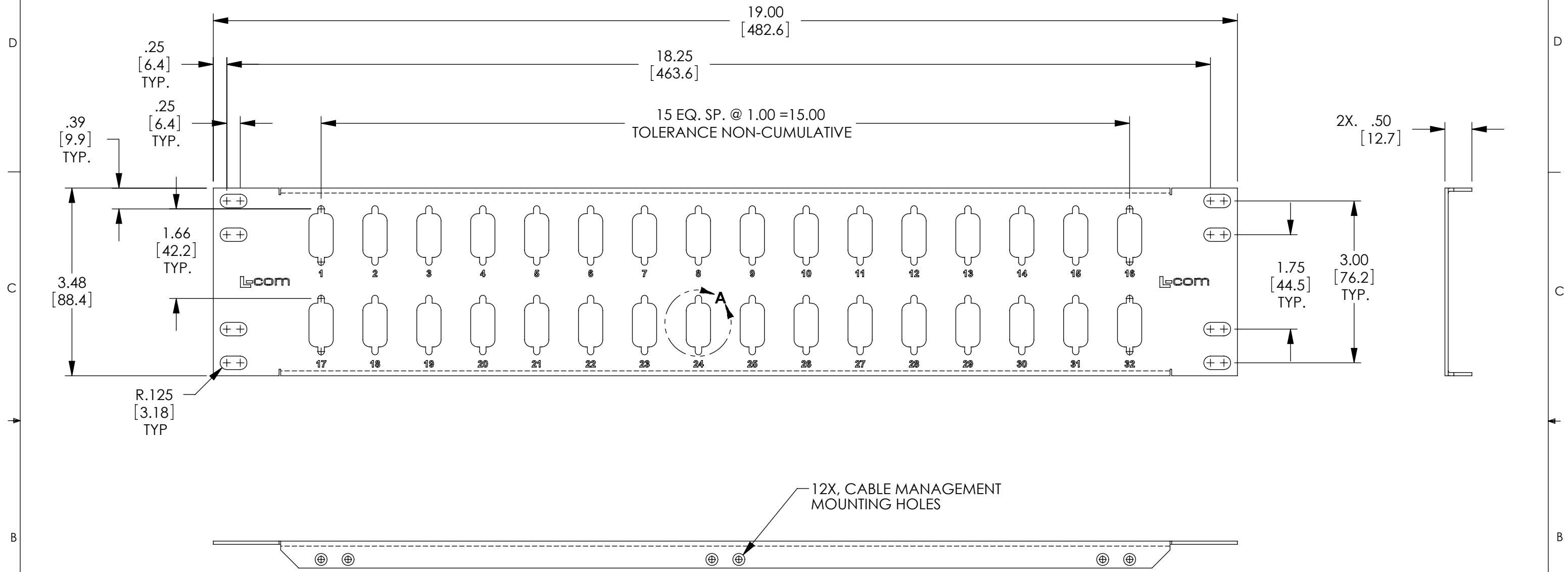


THE INFORMATION CONTAINED IN THIS DRAWING IS THE SOLE PROPERTY OF L-COM, INC. ANY REPRODUCTIONS IN PART OR WHOLE WITHOUT THE WRITTEN PERMISSION OF L-COM, INC. IS PROHIBITED.

REVISIONS			
REV	DESCRIPTION	DATE	CHANGED BY
A	INITIAL RELEASE	2/14/11	D.FRISIELLO



NOTES:
 MATERIAL: 16 GA (.060 [1.52] THK) COLD ROLLED STEEL
 FINISH: FLAT BLACK POWDER COAT.
 SILKSCREEN: COLOR: WHITE
 PANEL SHALL BE INDIVIDUALLY PACKAGED IN ACCORDANCE WITH L-COM SPECIFICATION PS-0014.

RoHS Compliant ✓

UNLESS OTHERWISE SPECIFIED, DIMENSIONS ARE IN INCHES [mm]
 DIMENSIONAL TOLERANCES:
 .X = ±.1
 .XX = ±.01
 .XXX = ±.005
 ANGULAR TOLERANCES:
 ALL = ± 1°

APPROVALS	DATE
D.FRISIELLO	1/31/11
M.MARTINEZ	1/31/11
M.MARTINEZ	1/31/11

CONFIGURATION DETAILS OF UNDIMENSIONED FEATURES MAY VARY
 COLOR VARIATIONS MAY OCCUR

L-com Global Connectivity		45 BEECHWOOD DRIVE NORTH ANDOVER, MA 01845	
CATEGORY: RACK PANELS			
PRODUCT DESCRIPTION: 2U PANEL W/32 DB9-HD15 CUTOUTS			
SIZE: B	FSCM NO.: 43321	DWG. NO.: PR35DS932B	REV.: A
SCALE: 1:1		CAD FILE: PR35DS932B.SLDDRW	SHEET 1 OF 1

