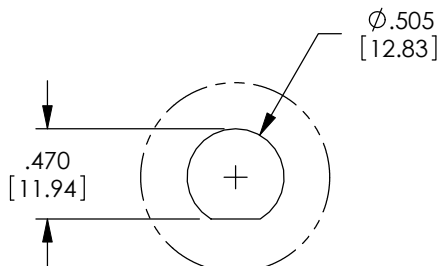
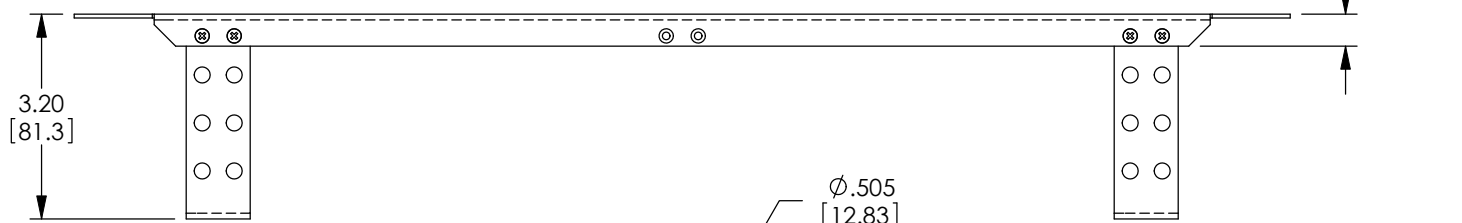
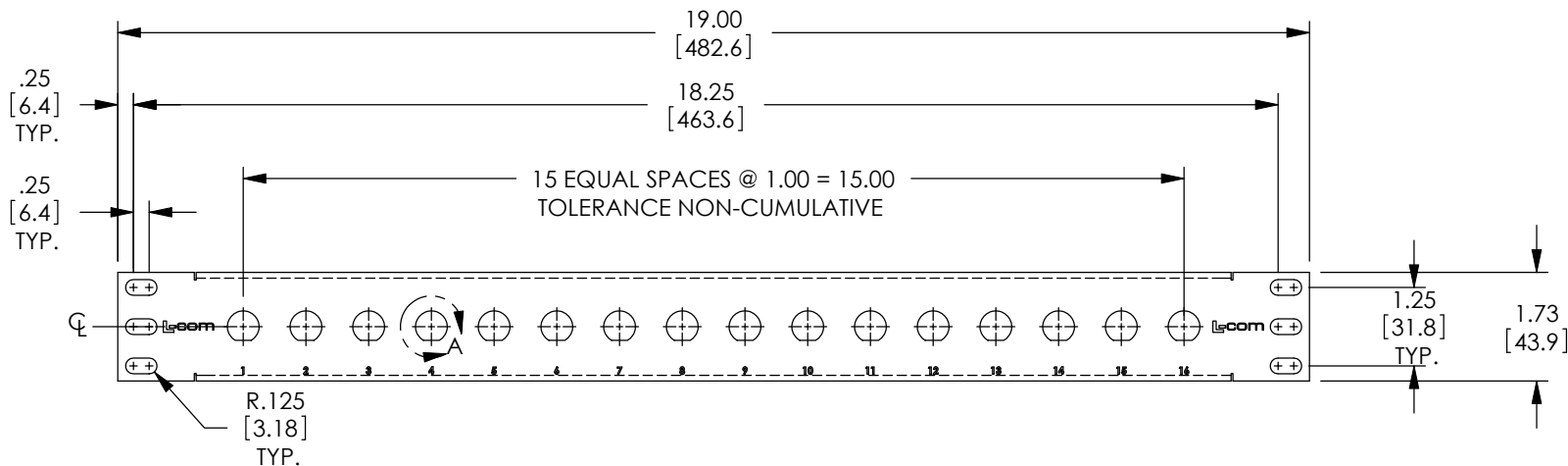


THE INFORMATION CONTAINED IN THIS DRAWING IS THE SOLE PROPERTY OF L-COM, INC. ANY REPRODUCTION IN PART OR WHOLE WITHOUT THE WRITTEN PERMISSION OF L-COM, INC. IS PROHIBITED.

REVISIONS			
REV	DESCRIPTION	DATE	APPROVED
A	RELEASED TO PRODUCTION	11/03/00	R.CARRICK
B	ECN 5336: RE-MODELED AND RE-DIMENSIONED, NEW FORMAT	2/23/11	D.FRISIELLO



DETAIL A
SCALE 1 : 1

RoHS Compliant ✓

NOTES:

1. MATERIAL: .06 THICK COLD ROLLED STEEL.
2. PANEL FINISH: FLAT BLACK POWDER COAT.
3. SILKSCREEN COLOR: WHITE.
4. PANEL SHALL BE PACKAGED IN ACCORDANCE WITH L-COM SPECIFICATION PS-0014.

UNLESS OTHERWISE SPECIFIED, DIMENSIONS ARE IN INCHES [mm] OVERALL CABLE LENGTH TOLERANCE: ≤12 [305] = +1 [25] / -0 >12 [305] ≤60 [1524] = +2 [51] / -0 >60 [1524] ≤120 [3048] = +4 [102] / -0 >120 [3048] ≤300 [7620] = +6 [152] / -0 >300 [7620] = +3% / -0%	APPROVALS	DATE		45 BEECHWOOD DRIVE NORTH ANDOVER, MA 01845
	DRAWN BY R.CARRICK	10/03/00		
ALL OTHER DIMENSIONAL TOLERANCES: .X = ± .2 .XX = ± .02 .XXX = ± .005	CHECKED BY ENG	10/03/00	CATEGORY RACK PANELS	
	APPROVED BY AFC	10/03/00	PRODUCT DESCRIPTION 1.75"X19" PNL W/16 .5" +CMB, BLK	
PROJECTION 	CONFIGURATION DETAILS OF UNDIMENSIONED FEATURES MAY VARY	COLOR VARIATIONS MAY OCCUR	SIZE A	FSCM NO. 43321
			DWG. NO. PR175-16CMB	REV. B
			SCALE: NONE	CAD FILE: PR175-16CMB.SLDDRW
				SHEET 1 OF 1