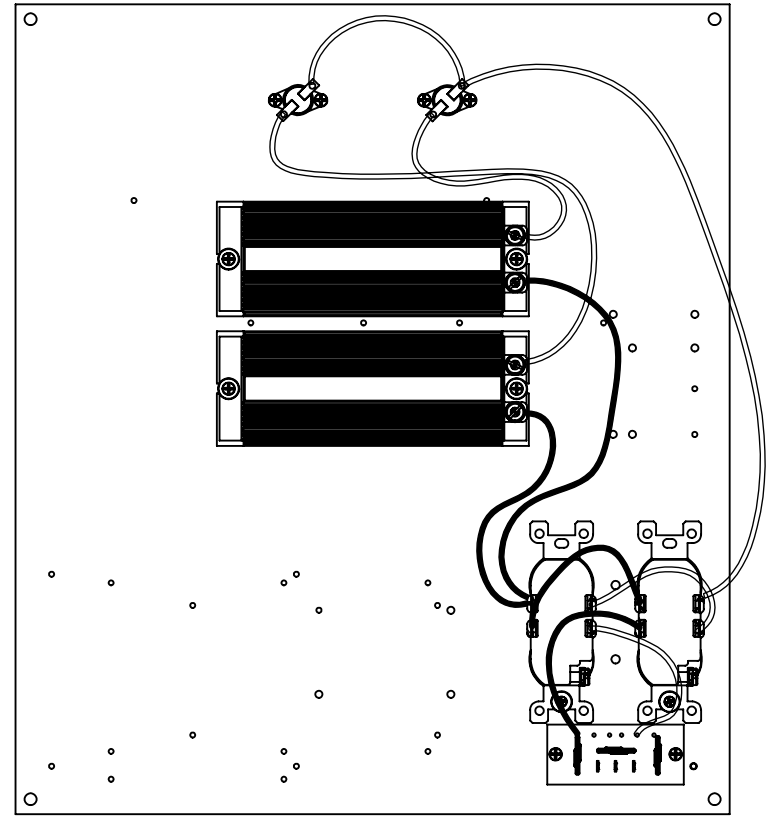
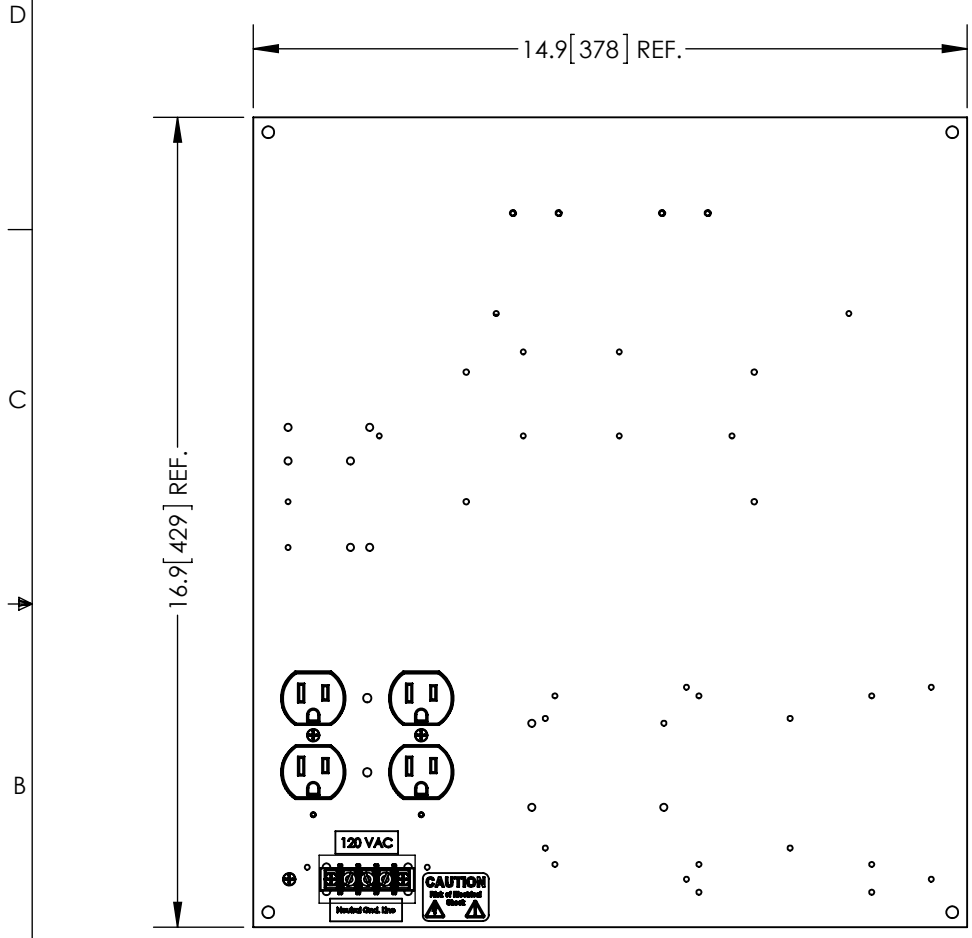


THE INFORMATION CONTAINED IN THIS DRAWING IS THE SOLE PROPERTY OF L-COM, INC. ANY REPRODUCTION IN PART OR WHOLE WITHOUT THE WRITTEN PERMISSION OF L-COM, INC. IS PROHIBITED.

| REVISIONS | | | |
|-----------|-----------------|---------|-----------|
| REV | DESCRIPTION | DATE | APPROVED |
| A | INITIAL RELEASE | 10/2/13 | D.GRIFFIN |
| | | | |
| | | | |



NOTES:
 PACKAGING:
 COMPONENT SHALL BE PACKAGED IN ACCORDANCE WITH L-COM SPEC PKG-00012

- ALL DIMENSIONS FOR REFERENCE ONLY -

REGULATORY COMPLIANCE:
 RoHS, CE

| | | | | | | |
|---|--|-----------------------|------------------|--|-----------------------------|------------------|
| UNLESS OTHERWISE SPECIFIED, DIMENSIONS ARE IN INCHES [mm] | APPROVALS | DATE | | 45 BEECHWOOD DRIVE NORTH ANDOVER, MA 01845 | | |
| | DRAWN BY B.PUCHASKI | 09/30/13 | | | | |
| | DIMENSIONAL TOLERANCES: .X = ±.1 [2.54] .XX = ±.01 [.25] .XXX = ±.005 [.13] | CHECKED BY P.PESA | 09/30/13 | CATEGORY ENCLOSURE | | |
| | ANGULAR TOLERANCES: ALL = ± 1° | APPROVED BY P.PESA | 09/30/13 | PRODUCT DESCRIPTION REPLACEMENT 18 INCH NEMA MOUNTING PLATE 120VAC W/ HEATER | | |
| PROJECTION | CONFIGURATION DETAILS OF UNDIMENSIONED FEATURES MAY VARY | | SIZE A | FSCM NO. 43321 | DWG. NO. NB18-RP1H0 | REV. A |
| | COLOR VARIATIONS MAY OCCUR | | SCALE: NONE | | CAD FILE: NB18-RP1H0.SLDDRW | SHEET 1 OF 1 |