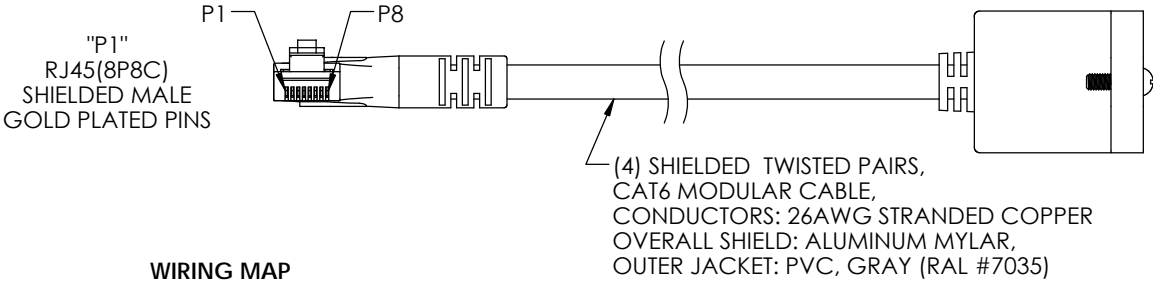
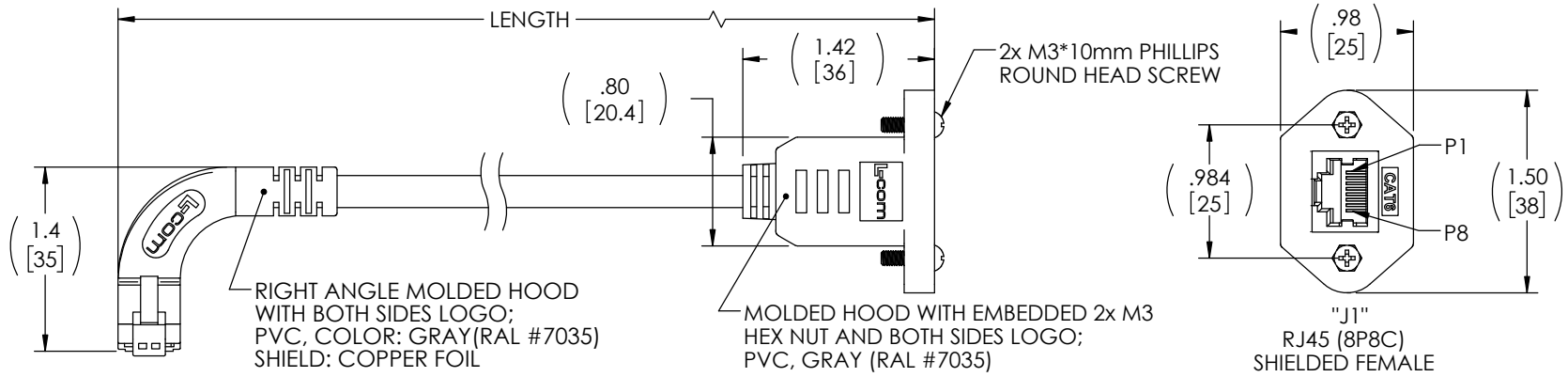
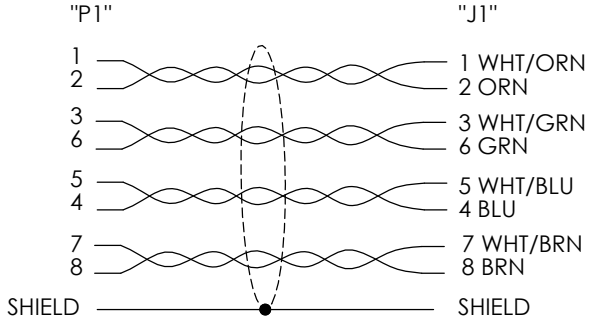


THE INFORMATION CONTAINED IN THIS DRAWING IS THE SOLE PROPERTY OF L-COM, INC. ANY REPRODUCTION IN PART OR WHOLE WITHOUT THE WRITTEN PERMISSION OF L-COM, INC. IS PROHIBITED.

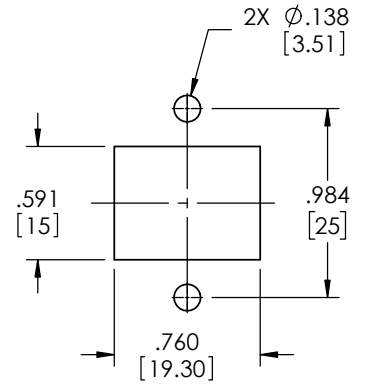
REVISION					
ZONE	REV	DESCRIPTION	DATE	CHANGED BY	APPROVED
	A	INITIAL RELEASE	02/01/2024	BZHANG	WLI



WIRING MAP



PART NUMBER	LENGTH	
	METERS	FEET
LCC101002-R-0.5M	0.50	1.64
LCC101002-R-0.75M	0.75	2.46
LCC101002-R-1M	1.00	3.28
LCC101002-R-1.5M	1.50	4.92
LCC101002-R-2M	2.00	6.56



RECOMMENDED PANEL CUTOUT

- NOTES:**
1. MODULAR CONNECTOR TO MEET TIA-1096.
 2. CABLE ASSEMBLY TO BE SHIPPED WITH (2) M3 X 10mm LONG PHILLIPS ROUND HEAD SCREWS
 3. CABLE ASSEMBLY SHALL BE TESTED FOR CONTINUITY.
 4. CABLE ASSEMBLY SHALL BE INDIVIDUALLY PACKAGED IN ACCORDANCE WITH L-COM SPEC. PS-0031.

UNLESS OTHERWISE SPECIFIED, DIMENSIONS ARE IN INCHES [mm] OVERALL CABLE LENGTH TOLERANCE: ≤12 [305] = +1 [25] / -0 >12 [305] ≤60 [1524] = +2 [51] / -0 >60 [1524] ≤120 [3048] = +4 [102] / -0 >120 [3048] ≤300 [7620] = +6 [152] / -0 >300 [7620] = +5% / -0 ALL OTHER DIMENSIONAL TOLERANCES: .X = ± .2 [5] FRACTIONS ± 1/32 .XX = ± .02 [5] ANGLES ± 1° .XXX = ± .005 [13]	APPROVALS DRAWN BY BZHANG CHECKED BY WLI APPROVED BY WLI	DATE 12/25/2023 12/25/2023 12/25/2023	50 High Street, West Mill, North Andover, MA 01845 USA. Phone: 1.800.341.5266 1.978.682.6936	
	CONFIGURATION DETAILS OF UNDIMENSIONED FEATURES MAY VARY			CATEGORY TELECOM/MODULAR
	THIRD-ANGLE PROJECTION 	COLOR VARIATIONS MAY OCCUR	PRODUCT DESCRIPTION C6 RJ45 FLANGE MNT F SHLD/90° RGT M FTP PVC GRY	SIZE A CAGE CODE 43321 ITEM NO. LCC101002-R
	REF	SCALE: NONE CAD FILE: LCC101002-R.SLDDRW	SHEET 1 OF 1	REV. A