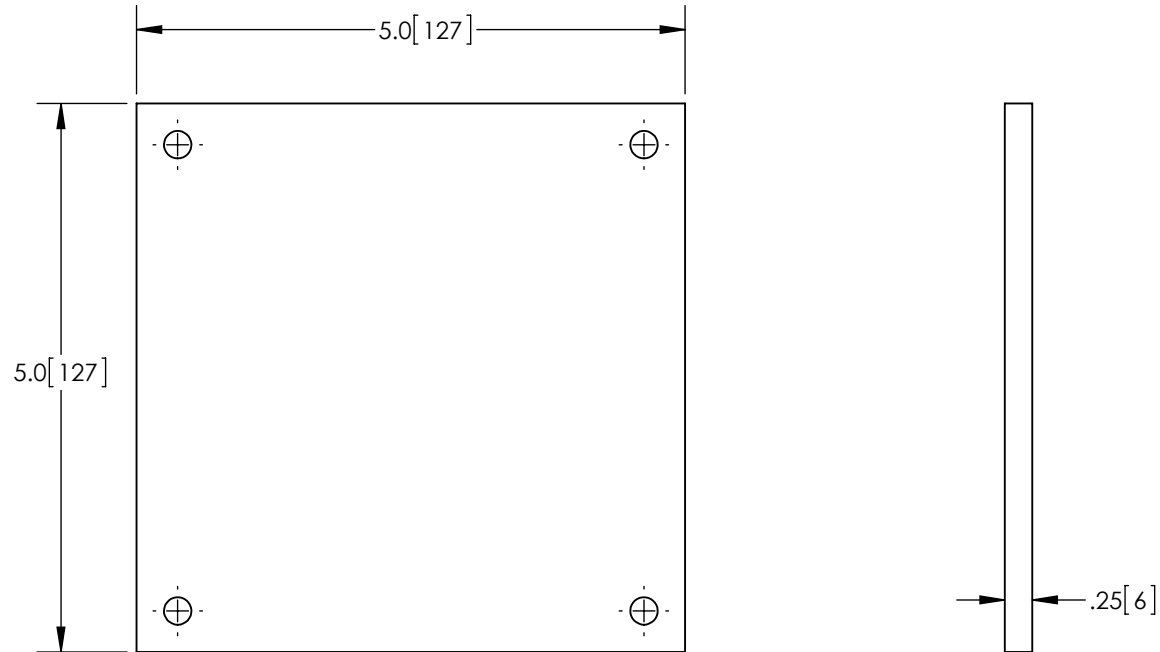


THE INFORMATION CONTAINED IN THIS DRAWING IS THE SOLE PROPERTY OF L-COM, INC. ANY REPRODUCTION IN PART OR WHOLE WITHOUT THE WRITTEN PERMISSION OF L-COM, INC. IS PROHIBITED.


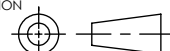
REVISIONS			
REV	DESCRIPTION	DATE	APPROVED
A	INITIAL RELEASE	2/6/13	D.GRIFFIN



NOTES:

- 1- PACKAGE IN ACCORDANCE WITH L-COM SPECIFICATION PS-0014
- ALL DIMENSIONS FOR REFERENCE ONLY -

**RoHS Compliant** ✓

UNLESS OTHERWISE SPECIFIED, DIMENSIONS ARE IN INCHES [mm]  DIMENSIONAL TOLERANCES: .X = ±.1 .XX = ±.01 .XXX = ±.005  ANGULAR TOLERANCES: ALL = ± 1°	APPROVALS	DATE		45 BEECHWOOD DRIVE NORTH ANDOVER, MA 01845
	DRAWN BY B.PUCHASKI	02/04/13		
	CONFIGURATION DETAILS OF UNDIMENSIONED FEATURES MAY VARY	CHECKED BY P.PESA	02/04/13	CATEGORY ENCLOSURES
PROJECTION	COLOR VARIATIONS MAY OCCUR	APPROVED BY P.PESA	PRODUCT DESCRIPTION MOUNTING PLATE BLANK NON-METALIC FOR 6 X 6 NEMA ENCLOSURE	
	SIZE <b>A</b>	FSCM NO. <b>43321</b>	DWG. NO. <b>HGX-NPLATE31</b>	REV. <b>A</b>
SCALE: NONE		CAD FILE: HGX-NPLATE31.SLDDRW		SHEET 1 OF 1