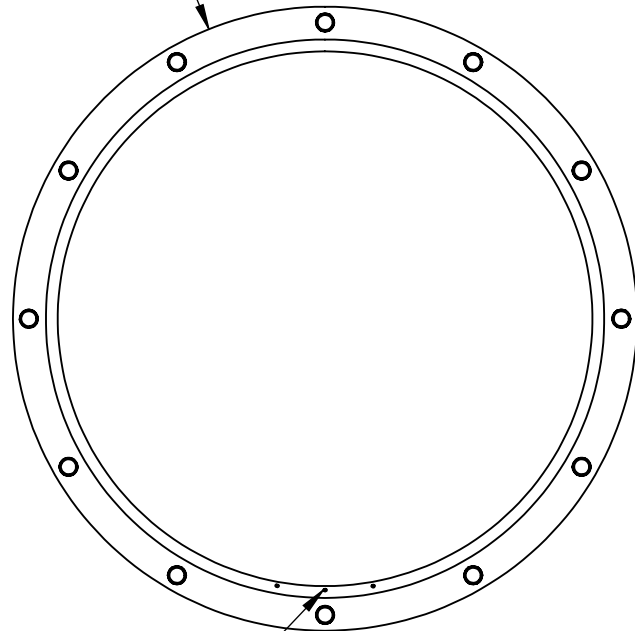


THE INFORMATION CONTAINED IN THIS DRAWING IS THE SOLE PROPERTY OF L-COM, INC. ANY REPRODUCTION IN PART OR WHOLE WITHOUT THE WRITTEN PERMISSION OF L-COM, INC. IS PROHIBITED.

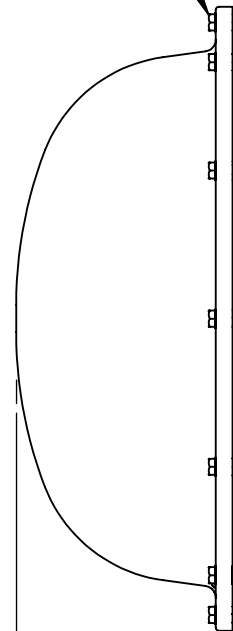
REVISIONS			
REV	DESCRIPTION	DATE	APPROVED
A	INITIAL RELEASE	1/3/12	D.GRIFFIN

Ø26.0 [660]

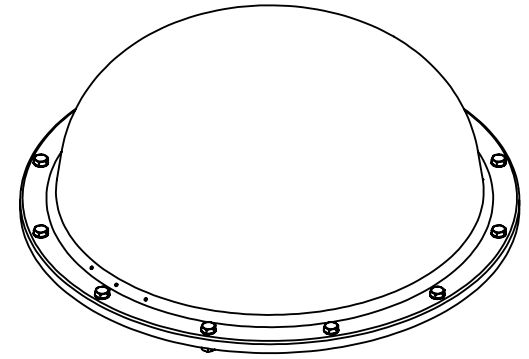


DRAIN HOLES (3X)

BOLTS W/WASHERS, LOCKWASHER, AND HEX NUT PROVIDED (12X)




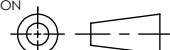
9.0 [229]



NOTES:
 PACKAGING:
 COMPONENT SHALL BE PACKAGED IN ACCORDANCE WITH L-COM SPEC PKG-00026

- ALL DIMENSIONS FOR REFERENCE -

RoHS Compliant ✓

UNLESS OTHERWISE SPECIFIED, DIMENSIONS ARE IN INCHES [mm] DIMENSIONAL TOLERANCES: .X = ±.1 .XX = ±.01 .XXX = ±.005 ANGULAR TOLERANCES: ALL = ± 1°	APPROVALS	DATE	 45 BEECHWOOD DRIVE NORTH ANDOVER, MA 01845
	DRAWN BY B.PUCHASKI	12/28/11	
	CHECKED BY P.PESA	12/28/11	
	APPROVED BY P.PESA	12/28/11	CATEGORY ANTENNA
PROJECTION 	CONFIGURATION DETAILS OF UNDIMENSIONED FEATURES MAY VARY	PRODUCT DESCRIPTION 600mm DIAMETER RADOME COVER FOR PARABOLIC DISH ANTENNA	
	COLOR VARIATIONS MAY OCCUR	SIZE A	FSCM NO. 43321
		DWG. NO. HGR-06	REV. A
		SCALE: NONE	CAD FILE: HGR-06.SLDDRW
			SHEET 1 OF 1