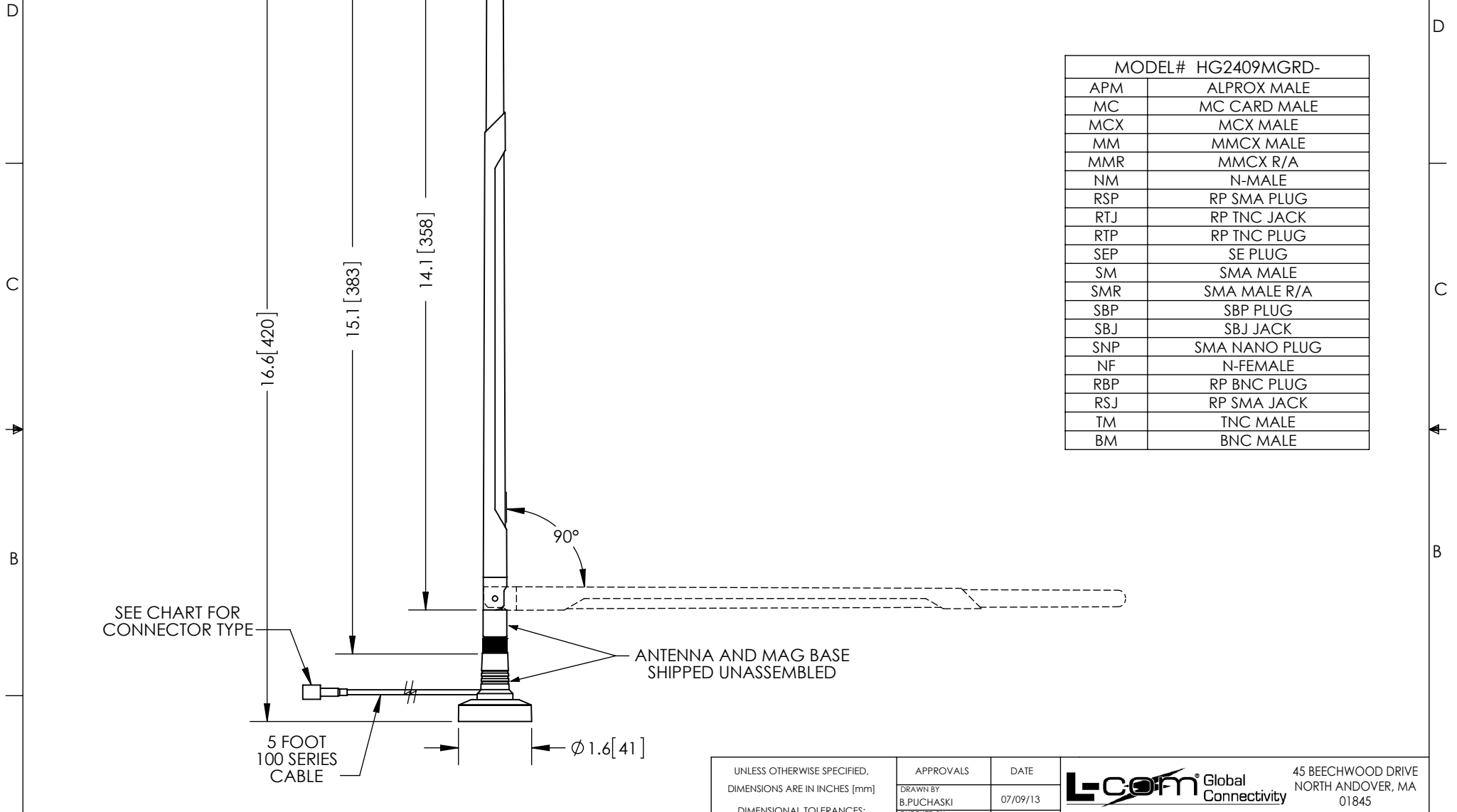


THE INFORMATION CONTAINED IN THIS DRAWING IS THE SOLE PROPERTY OF L-COM, INC. ANY REPRODUCTION IN PART OR WHOLE WITHOUT THE WRITTEN PERMISSION OF L-COM, INC. IS PROHIBITED.

REVISIONS			
REV	DESCRIPTION	DATE	APPROVED
A	INITIAL RELEASE	07/09/13	D.GRIFFIN
-	-	-	-
-	-	-	-



MODEL# HG2409MGRD-	
APM	ALPROX MALE
MC	MC CARD MALE
MCX	MCX MALE
MM	MMCX MALE
MMR	MMCX R/A
NM	N-MALE
RSP	RP SMA PLUG
RTJ	RP TNC JACK
RTP	RP TNC PLUG
SEP	SE PLUG
SM	SMA MALE
SMR	SMA MALE R/A
SBP	SBP PLUG
SBJ	SBJ JACK
SNP	SMA NANO PLUG
NF	N-FEMALE
RBP	RP BNC PLUG
RSJ	RP SMA JACK
TM	TNC MALE
BM	BNC MALE

NOTES:
 PACKAGING:
 EACH COMPONENT SHALL BE INDIVIDUALLY PACKAGED
 IN ACCORDANCE WITH L-COM SPECIFICATION PKG-00031

REGULATORY COMPLIANCE:
 RoHS, CE

UNLESS OTHERWISE SPECIFIED, DIMENSIONS ARE IN INCHES [mm]	APPROVALS	DATE		45 BEECHWOOD DRIVE NORTH ANDOVER, MA 01845
	DRAWN BY B.PUCHASKI	07/09/13		
	CHECKED BY P.PESA	07/09/13		
DIMENSIONAL TOLERANCES: .X = ±.1 [2.54] .XX = ±.01 [.25] .XXX = ±.005 [.13]	APPROVED BY P.PESA	07/09/13	CATEGORY ANTENNA	
ANGULAR TOLERANCES: ALL = ± 1°	CONFIGURATION DETAILS OF UNDIMENSIONED FEATURES MAY VARY		PRODUCT DESCRIPTION 2.4 GHz 9dBi RUBBER DUCK ANTENNA W/MAG MOUNT, 5 FOOT 100 SERIES CABLE AND CONNECTOR	
PROJECTION 	COLOR VARIATIONS MAY OCCUR	SIZE A	FSCM NO. 43321	DWG. NO. HG2409MGRD
		SCALE: NONE	CAD FILE: HG2409MGRD.SLDDRW	REV. A
				SHEET 1 OF 1