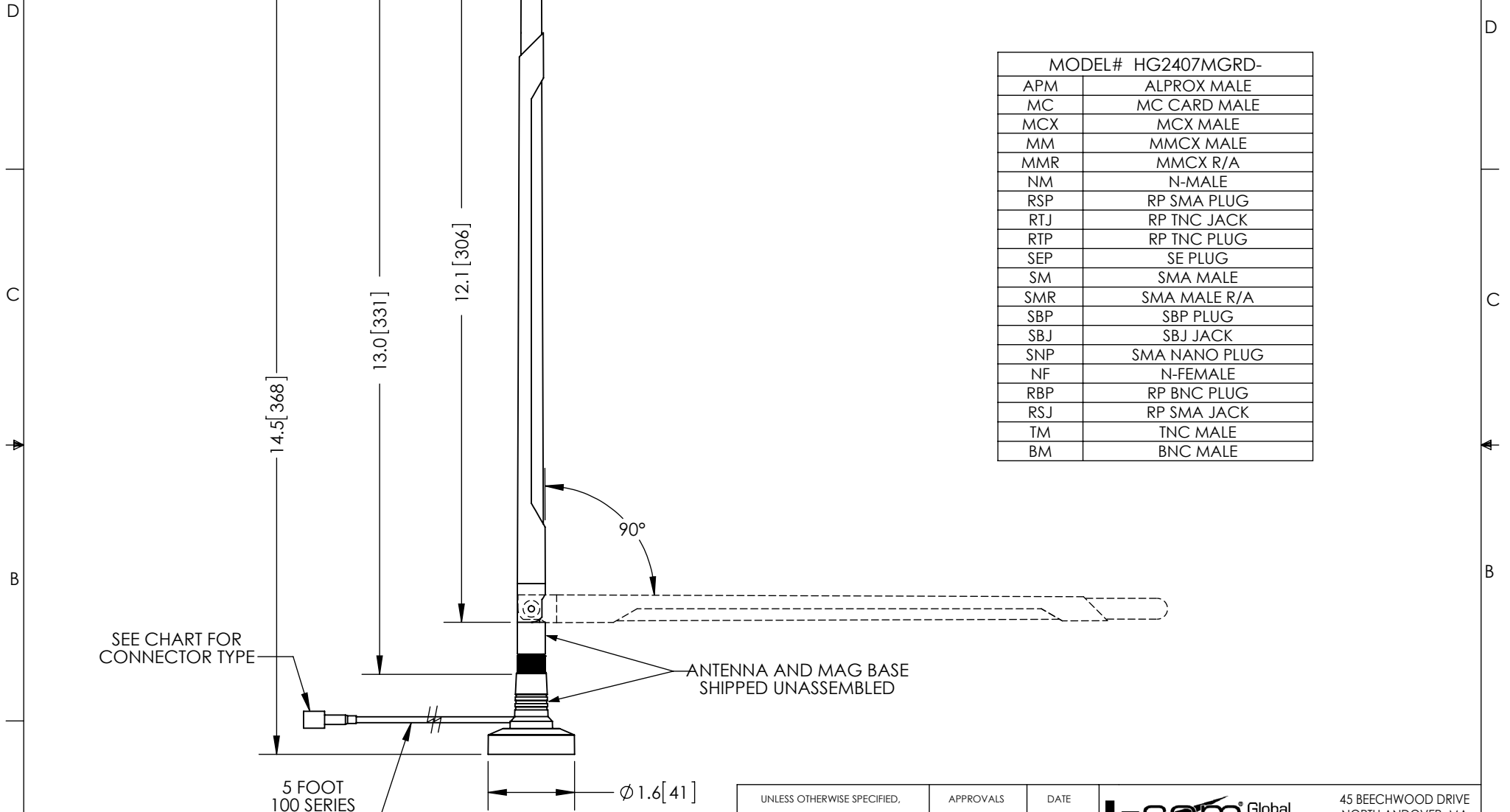


THE INFORMATION CONTAINED IN THIS DRAWING IS THE SOLE PROPERTY OF L-COM, INC. ANY REPRODUCTION IN PART OR WHOLE WITHOUT THE WRITTEN PERMISSION OF L-COM, INC. IS PROHIBITED.

REVISIONS			
REV	DESCRIPTION	DATE	APPROVED
A	INITIAL RELEASE	07/09/13	D.GRIFFIN
-			



MODEL# HG2407MGRD-	
APM	ALPROX MALE
MC	MC CARD MALE
MCX	MCX MALE
MM	MMCX MALE
MMR	MMCX R/A
NM	N-MALE
RSP	RP SMA PLUG
RTJ	RP TNC JACK
RTP	RP TNC PLUG
SEP	SE PLUG
SM	SMA MALE
SMR	SMA MALE R/A
SBP	SBP PLUG
SBJ	SBJ JACK
SNP	SMA NANO PLUG
NF	N-FEMALE
RBP	RP BNC PLUG
RSJ	RP SMA JACK
TM	TNC MALE
BM	BNC MALE

SEE CHART FOR CONNECTOR TYPE

5 FOOT 100 SERIES CABLE

ANTENNA AND MAG BASE SHIPPED UNASSEMBLED

NOTES:
 PACKAGING:
 EACH COMPONENT SHALL BE INDIVIDUALLY PACKAGED IN ACCORDANCE WITH L-COM SPECIFICATION PKG-00031

REGULATORY COMPLIANCE:
 RoHS, CE

UNLESS OTHERWISE SPECIFIED, DIMENSIONS ARE IN INCHES [mm] DIMENSIONAL TOLERANCES: .X = ±.1 [2.54] .XX = ±.01 [.25] .XXX = ±.005 [.13] ANGULAR TOLERANCES: ALL = ± 1°	APPROVALS	DATE		45 BEECHWOOD DRIVE NORTH ANDOVER, MA 01845
	DRAWN BY B.PUCHASKI	07/09/13		CATEGORY
	CHECKED BY P.PESA	07/09/13	PRODUCT DESCRIPTION 2.4 GHz 7dBi RUBBER DUCK ANTENNA W/ MAG MOUNT, 5 FOOT 100 SERIES CABLE AND CONNECTOR	
	APPROVED BY P.PESA	07/09/13	SIZE A	FSCM NO. 43321
CONFIGURATION DETAILS OF UNDIMENSIONED FEATURES MAY VARY		DWG. NO. HG2407MGRD		REV. A
COLOR VARIATIONS MAY OCCUR		SCALE: NONE		CAD FILE: HG2407MGRD.SLDDRW
			SHEET 1 OF 1	