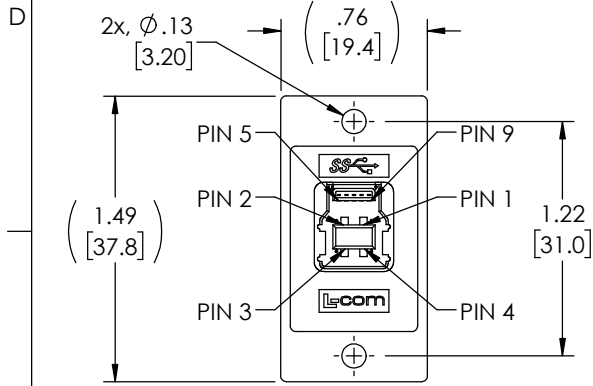
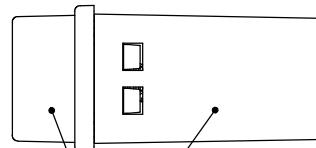
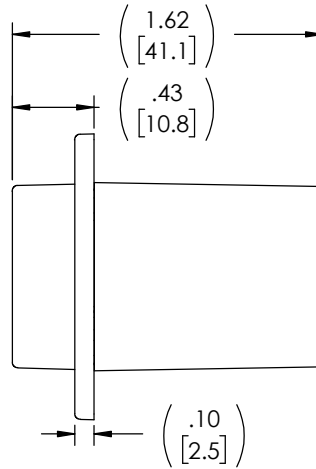


THE INFORMATION CONTAINED IN THIS DRAWING IS THE SOLE PROPERTY OF L-COM, INC. ANY REPRODUCTION IN PART OR WHOLE WITHOUT THE WRITTEN PERMISSION OF L-COM, INC. IS PROHIBITED.

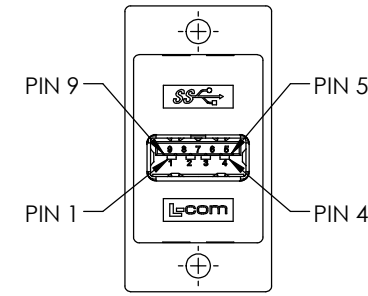
REVISIONS			
REV	DESCRIPTION	DATE	APPROVED
A	INITIAL RELEASE	11/23/2020	D.GUTTADAURO



"J1"  
USB 3.0 TYPE "B"  
FEMALE CONNECTOR  
30u" GOLD PLATED CONTACTS  
NICKEL PLATED SHELL

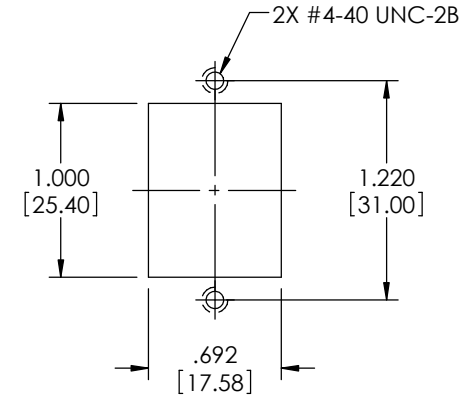


ABS COUPLER HOUSING,  
COLOR: IVORY



"J2"  
USB 3.0 TYPE "A"  
FEMALE CONNECTOR  
30u" GOLD PLATED CONTACTS  
NICKEL PLATED SHELL

"J1"	WIRING MAP	"J2"
1	_____	1
2	_____	2
3	_____	3
4	_____	4
5	_____	5
6	_____	6
7	_____	7
8	_____	8
9	_____	9
SHELL	_____	SHELL



RECOMMENDED  
PANEL CUTOUT

**NOTES:**

- RATING:  
CURRENT: 1.8A (P1 & P4 CONTACTS); 0.25A(OTHER CONTACTS)  
VOLTAGE: 30V max.  
OPERATING TEMPERATURE: -10°C TO +70°C.
- COUPLER SHALL BE TESTED FOR CONTINUITY.
- COUPLER SHALL BE INDIVIDUALLY PACKAGED IN ACCORDANCE WITH L-COM PACKAGING SPEC PS-0031.

UNLESS OTHERWISE SPECIFIED, DIMENSIONS ARE IN INCHES [mm] OVERALL CABLE LENGTH TOLERANCE: ≤12 [305] = +1 [25] / -0 >12 [305] ≤60 [1524] = +2 [51] / -0 >60 [1524] ≤120 [3048] = +4 [102] / -0 >120 [3048] ≤300 [7620] = +6 [152] / -0 >300 [7620] = +5% / -0 ALL OTHER DIMENSIONAL TOLERANCES: .X = ± .2 [5]      FRACTIONS ± 1/32 .XX = ± .02 [5]      ± 1/32 .XXX = ± .005 [13]      ANGLES ± 1° THIRD-ANGLE PROJECTION 	APPROVALS	DATE	50 High Street, West Mill, North Andover, MA 01845 USA. Phone: 1.800.341.5266 1.978.682.6936 CATEGORY <b>USB</b> PRODUCT DESCRIPTION <b>USB3.0 COUPLER PNL MNT BF-AF IVORY</b>		
	DRAWN BY B.ZHANG	08/18/2020			
	CHECKED BY D.CONTROL	08/18/2020			
	APPROVED BY D.GUTTADAURO	08/18/2020			
CONFIGURATION DETAILS OF UNDIMENSIONED FEATURES MAY VARY	COLOR VARIATIONS MAY OCCUR	SIZE <b>A</b>	CAGE CODE <b>43321</b>	DWG. NO. <b>ECF504-3BA-IVY</b>	REV. <b>A</b>
SCALE: NONE		CAD FILE: ECF504-3BA-IVY.SLDDRW		SHEET 1 OF 1	