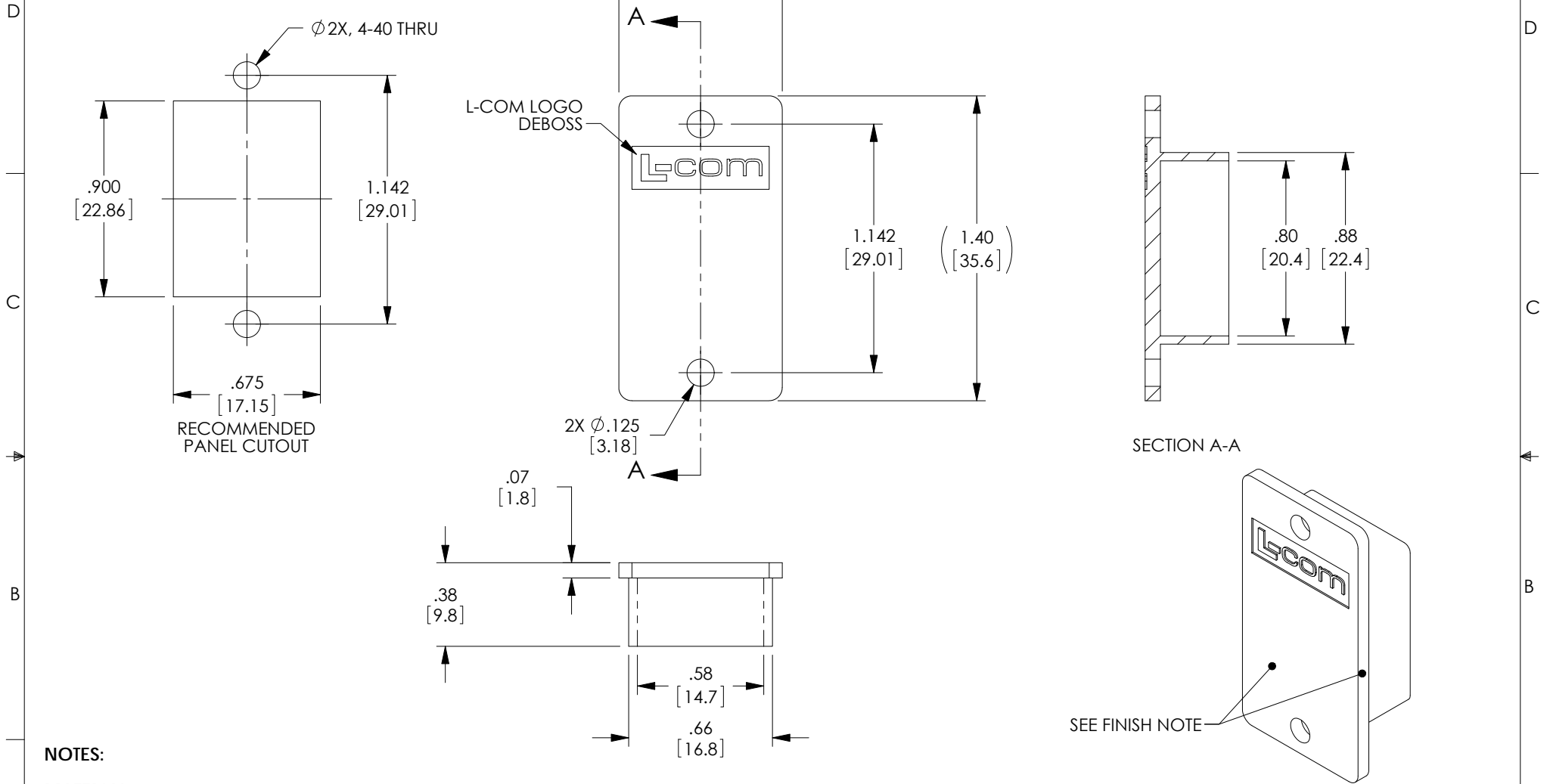


THE INFORMATION CONTAINED IN THIS DRAWING IS THE SOLE PROPERTY OF L-COM, INC. ANY REPRODUCTION IN PART OR WHOLE WITHOUT THE WRITTEN PERMISSION OF L-COM, INC. IS PROHIBITED.

REVISIONS			
REV	DESCRIPTION	DATE	APPROVED
A	INITIAL RELEASE	07/07/17	J.LABOY



L-COM LOGO DEBOSS

SECTION A-A

SEE FINISH NOTE

NOTES:

MATERIAL:
 HOUSING: ABS, UL94V-0
 FINISH: (FRONT SURFACE AND EDGES) CHARMILLES #27, COLOR, BLACK

MISCELLANEOUS:
 2x, #4-40 UNC-2A PAN HEAD SCREWS, INCLUDED.
 OPERATING TEMPERATURE RANGE: -10° C TO +70° C.
 BULK PACKAGE 25 ADAPTERS PER BAG IN ACCORDANCE WITH L-COM SPECIFICATION PS-0031.

REGULATORY COMPLIANCE:
 CE2011/65/EU(RoHS DIRECTIVE)

UNLESS OTHERWISE SPECIFIED, DIMENSIONS ARE IN INCHES [mm] OVERALL CABLE LENGTH TOLERANCE: ≤12 [305] = +1 [25] / -0 >12 [305] ≤60 [1524] = +2 [51] / -0 >60 [1524] ≤120 [3048] = +4 [102] / -0 >120 [3048] ≤300 [7620] = +6 [152] / -0 >300 [7620] = +5% / -0% ALL OTHER DIMENSIONAL TOLERANCES: .X = ±.2 [5.08] .XX = ±.02 [51] .XXX = ±.005 [13]	APPROVALS	DATE	50 HIGH STREET NORTH ANDOVER, MA 01845		
	DRAWN BY D.CUI	07/03/17			CATEGORY TELECOM/MODULAR
	CHECKED BY S.PAN	07/03/17	PRODUCT DESCRIPTION CPLR PNL MNT BLANK FLAT FRONT		
	APPROVED BY D.GUITADAURO	07/03/17		SIZE A FSCM NO. 43321 DWG. NO. ECF-BLANK25 REV. A	
PROJECTION	COLOR VARIATIONS MAY OCCUR	ECF-SK	SCALE: NONE	CAD FILE: ECF-BLANK25.SLDDRW	SHEET 1 OF 1