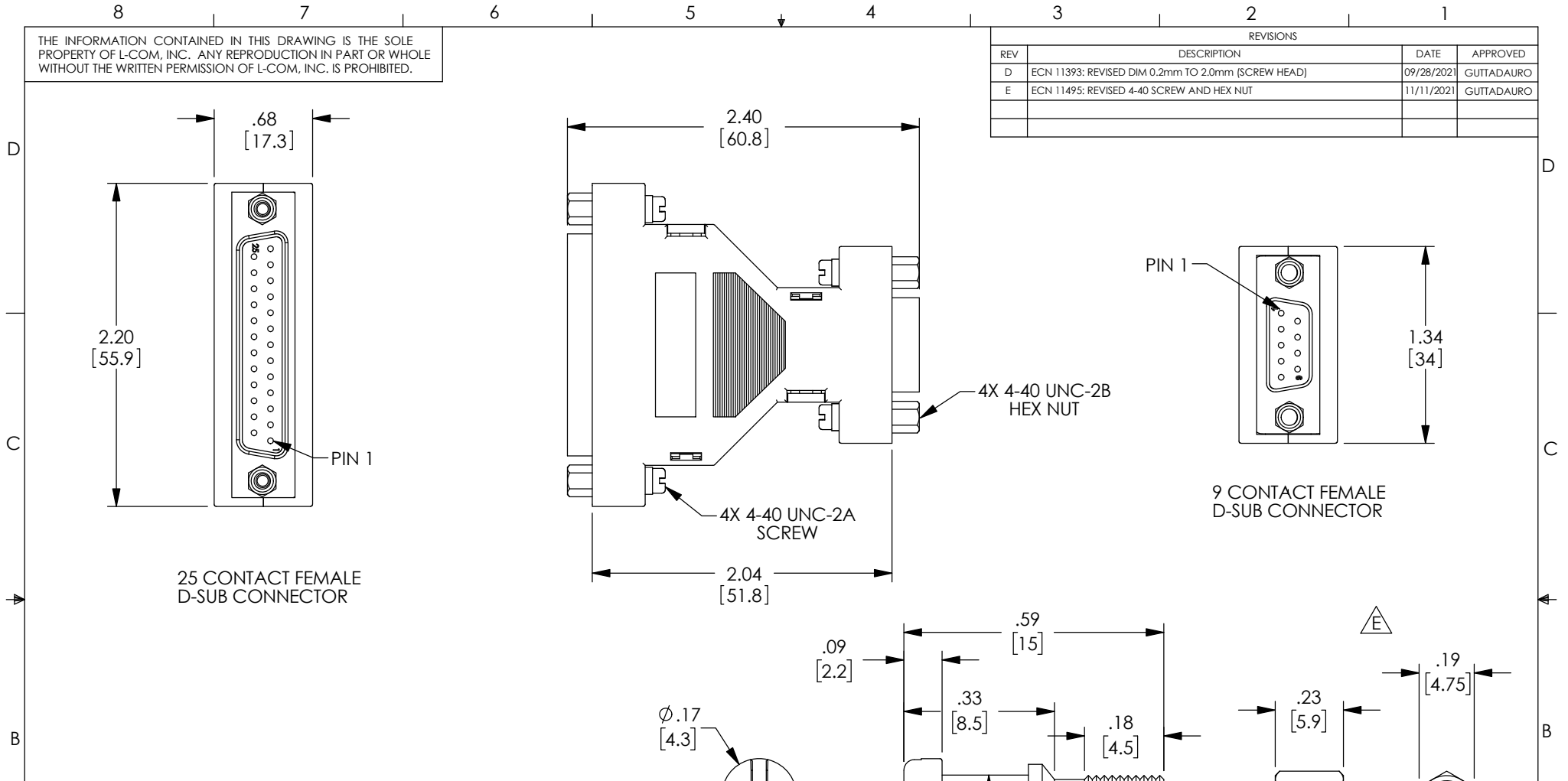


THE INFORMATION CONTAINED IN THIS DRAWING IS THE SOLE PROPERTY OF L-COM, INC. ANY REPRODUCTION IN PART OR WHOLE WITHOUT THE WRITTEN PERMISSION OF L-COM, INC. IS PROHIBITED.

REVISIONS			
REV	DESCRIPTION	DATE	APPROVED
D	ECN 11393: REVISED DIM 0.2mm TO 2.0mm (SCREW HEAD)	09/28/2021	GUTTADAURO
E	ECN 11495: REVISED 4-40 SCREW AND HEX NUT	11/11/2021	GUTTADAURO


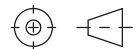


25 CONTACT FEMALE D-SUB CONNECTOR

9 CONTACT FEMALE D-SUB CONNECTOR

- NOTES:**
1. D-SUB CONNECTORS HAVE SOLDER TERMINALS
 2. HOUSING: GRAY THERMOPLASTIC
 3. HOUSING SNAPS TOGETHER
 4. KIT SHOWN COMES UNASSEMBLED
 5. KIT CONSISTS OF:
 - 1X PLASTIC HOUSING
 - 1X DB25 FEMALE CONNECTOR
 - 1X DB9 FEMALE CONNECTOR
 - 4X 4-40 SCREWS
 - 4X 4-40 HEX NUTS
 6. KIT TO BE PACKAGED IN ACCORDANCE WITH L-COM PACKAGING SPECIFICATION PS-0031
 7. ALL DIMENSIONS ARE FOR REFERENCE ONLY.

REGULATORY COMPLIANCE:
EU ROHS DIRECTIVE (MOST RECENT RELEASED VERSION)

UNLESS OTHERWISE SPECIFIED, DIMENSIONS ARE IN INCHES [mm] OVERALL CABLE LENGTH TOLERANCE: ≤12 [305] = +1 [25] / -0 >12 [305] ≤60 [1524] = +2 [51] / -0 >60 [1524] ≤120 [3048] = +4 [102] / -0 >120 [3048] ≤300 [7620] = +6 [152] / -0 >300 [7620] = +5% / -0 ALL OTHER DIMENSIONAL TOLERANCES: .X = ± .2 [5] FRACTIONS ± 1/32 .XX = ± .02 [5] ANGLES ± 1° .XXX = ± .005 [13]	APPROVALS DRAWN BY D.PARHAM CHECKED BY T.CLARK APPROVED BY R.CARRICK	DATE 01/18/2001 07/18/2001 07/25/2001	 an INFINITO brand 50 High Street, West Mill, North Andover, MA 01845 USA. Phone: 1.800.341.5266 1.978.682.6936
	THIRD-ANGLE PROJECTION 		
CONFIGURATION DETAILS OF UNDIMENSIONED FEATURES MAY VARY COLOR VARIATIONS MAY OCCUR		PRODUCT DESCRIPTION ADAPTER KIT DIY259FF	SCALE: NONE CAD FILE: DIY259FF.SLDDRW
SIZE A		CAGE CODE 43321	ITEM NO. DIY259FF
		REV. E	SHEET 1 OF 1