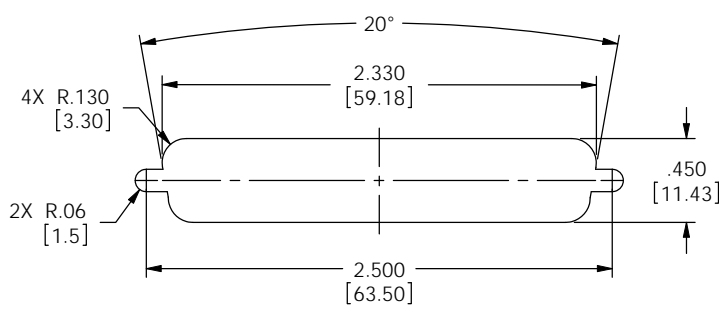


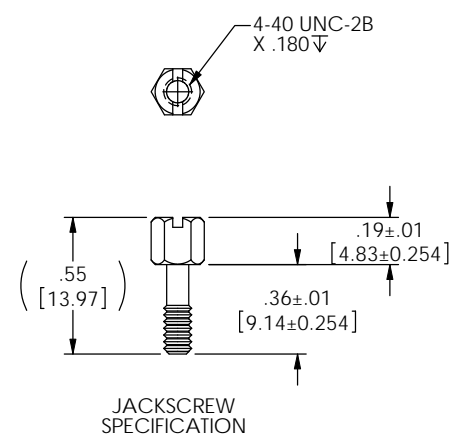
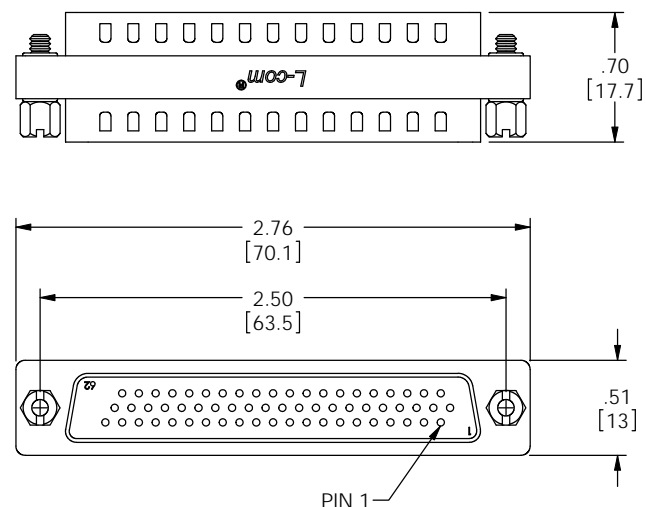
THE INFORMATION CONTAINED IN THIS DRAWING IS THE SOLE PROPERTY OF L-COM, INC. ANY REPRODUCTIONS IN PART OR WHOLE WITHOUT THE WRITTEN PERMISSION OF L-COM, INC. IS PROHIBITED.

REVISIONS			
REV	DESCRIPTION	DATE	CHANGED BY
F	ECN 4564-ADDED ROHS, UPDATED DRAWING AND NEW FORMAT	3/3/10	D.FRISIELLO
G	ECN 5937-ADDED NOTE FOR PANEL MOUNTING	1/25/12	D.FRISIELLO



RECOMMENDED PANEL OPENING
(MAX PANEL THICKNESS: 0.06")

NOTE: DIFFERENT STANDOFFS AND JACK SCREWS ARE REQUIRED FOR PANEL MOUNTING. SEE WWW.L-COM.COM OR MASTER CATALOG FOR DETAILS.



JACKSCREW SPECIFICATION

NOTES:

MATERIAL:
SHELL: STEEL
PINS: COPPER ALLOY
HARDWARE: BRASS
INSULATOR: PBT FIBER REINFORCED (UL94V-0 RATED)

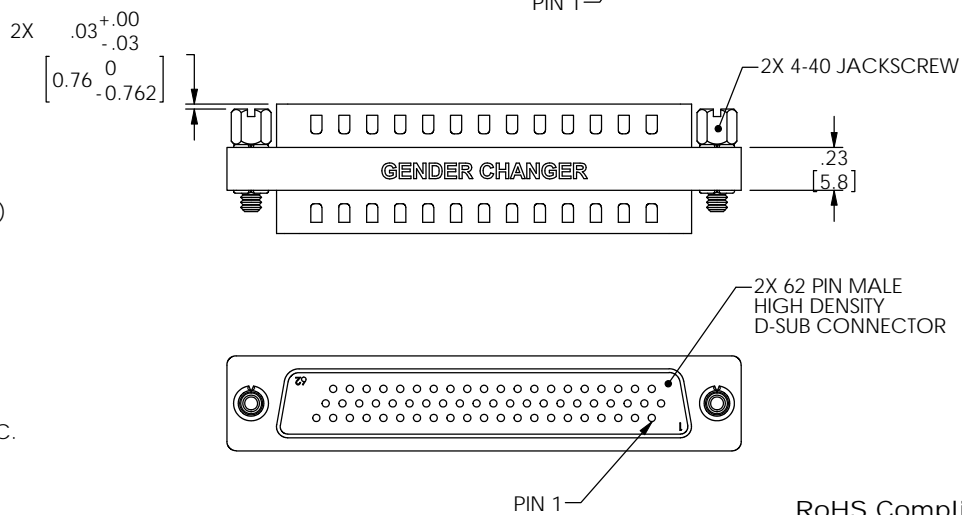
FINISH:
SHELL: TIN/NICKEL PLATED
PINS: GOLD FLASH PLATED
HARDWARE: NICKEL PLATED

ELECTRICAL:
CURRENT RATING: 3 AMP

MISCELLANEOUS:
OPERATING TEMPERATURE RANGE: -55°C TO +105°C.
ALL PINS ARE WIRED STRAIGHT THROUGH.
COMPONENT SHALL BE TESTED FOR CONTINUITY.

LABELING:
PANTONE 2945 BLUE. "L-COM" FONT MyriaMM ITALIC.
"GENDER CHANGER" FONT ARIAL BOLD, TEXT HEIGHTS: .085"
TEXT COLOR; WHITE.

PACKAGING:
COMPONENT SHALL BE INDIVIDUALLY PACKAGED IN ACCORDANCE WITH L-COM SPECIFICATION PS-0031.



RoHS Compliant ✓

UNLESS OTHERWISE SPECIFIED, DIMENSIONS ARE IN INCHES (mm)	APPROVALS	DATE	 45 BEECHWOOD DRIVE NORTH ANDOVER, MA 01845
DIMENSIONAL TOLERANCES: .X = ±.1 .XX = ±.01 .XXX = ±.005 ANGULAR TOLERANCES: ALL = ± 1°	DRAWN BY	03/01/02	
	CHECKED BY	03/01/02	
	APPROVED BY	03/01/02	
PROJECTION	CONFIGURATION DETAILS OF UNDIMENSIONED FEATURES MAY VARY COLOR VARIATIONS MAY OCCUR		CATEGORY: D-SUBMINIATURE PRODUCT DESCRIPTION: GENDER CHANGER, HD62 MALE/MALE SIZE: B FSCM NO.: 43321 DWG. NO.: DGBH62M REV.: G

SCALE: 2:1 CAD FILE: DGBH62M.SLDRAW SHEET 1 OF 1