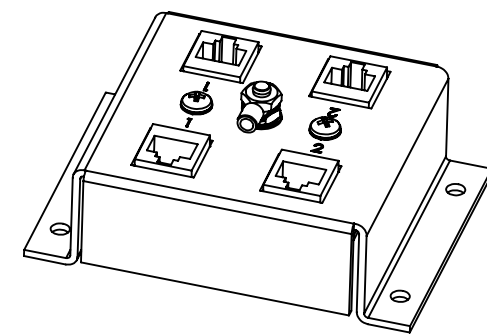
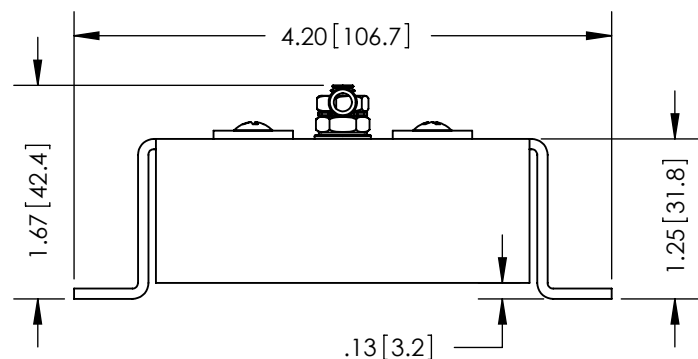
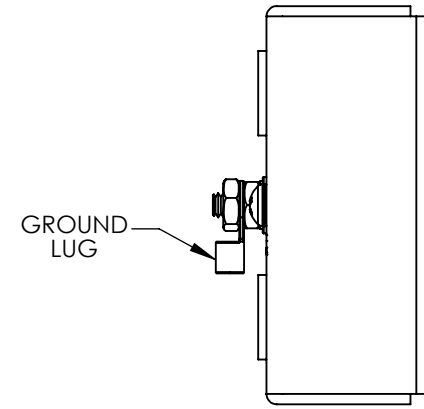
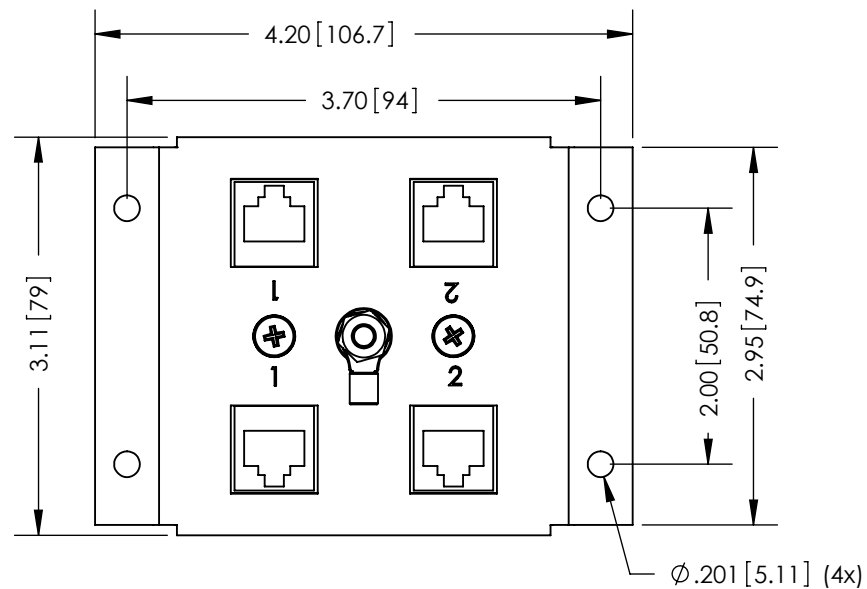


THE INFORMATION CONTAINED IN THIS DRAWING IS THE SOLE PROPERTY OF L-COM, INC. ANY REPRODUCTION IN PART OR WHOLE WITHOUT THE WRITTEN PERMISSION OF L-COM, INC. IS PROHIBITED.

REVISIONS			
REV	DESCRIPTION	DATE	APPROVED
A	INITIAL RELEASE	11/19/13	D.GRIFFIN

D
C
B
A



NOTE:
1- COMPONENTS SHALL BE INDIVIDUALLY PACKAGED
IN ACCORDANCE WITH L-COM SPECIFICATION PKG-00012

- ALL DIMENSIONS ARE FOR REFERENCE ONLY -

REGULATORY COMPLIANCE:
CE2011/65/EU (RoHS DIRECTIVE)

UNLESS OTHERWISE SPECIFIED, DIMENSIONS ARE IN INCHES [mm] DIMENSIONAL TOLERANCES: .X = ±.1 [2.54] .XX = ±.01 [.25] .XXX = ±.005 [.13] ANGULAR TOLERANCES: ALL = ± 1°	APPROVALS	DATE		45 BEECHWOOD DRIVE NORTH ANDOVER, MA 01845	
	DRAWN BY B.PUCHASKI	11/15/13		CATEGORY	LIGHTNING PROTECTOR
	CHECKED BY K.BURGNER	11/15/13		PRODUCT DESCRIPTION	2-PORT CAT6 INDOOR GAS TUBE LIGHTNING PROTECTOR
APPROVED BY P.PESA	11/15/13	CONFIGURATION DETAILS OF UNDIMENSIONED FEATURES MAY VARY	SIZE A	FSCM NO. 43321	
PROJECTION 	COLOR VARIATIONS MAY OCCUR	SCALE: NONE	DWG. NO. CMSP-CAT6T-2	REV. A	
CAD FILE: CMSP-CAT6T-2.SLDDRW			SHEET 1 OF 1		

8 7 6 5 4 3 2 1