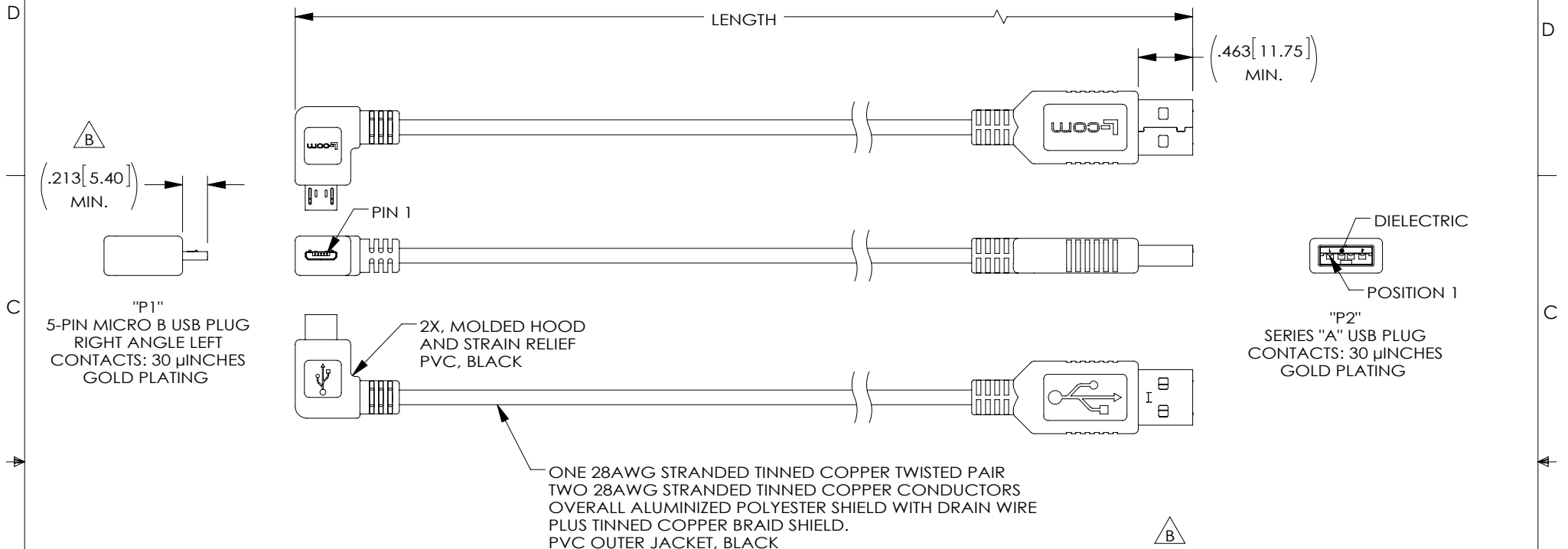
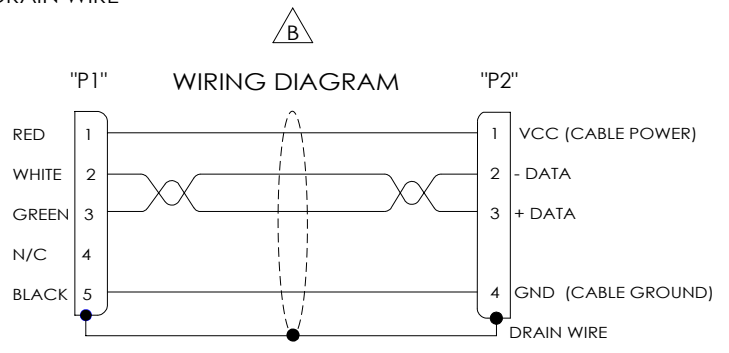


THE INFORMATION CONTAINED IN THIS DRAWING IS THE SOLE PROPERTY OF L-COM, INC. ANY REPRODUCTION IN PART OR WHOLE WITHOUT THE WRITTEN PERMISSION OF L-COM, INC. IS PROHIBITED.

| REVISIONS | | | |
|-----------|--|----------|--------------|
| REV | DESCRIPTION | DATE | APPROVED |
| A | INITIAL RELEASE | 3/2/12 | D.GRIFFIN |
| B | ECN 6451: UPDATED NOTES & WIRING MAP. CHANGED EXPOSED CONN. DIM. | 10/10/12 | D. DESJARDIN |
| B | ECN 99999: UPDATE TO CORRECT ORIENTATION OF LOGO ON MICRO END | 1/26/16 | S.LI |



| MODEL NUMBER | LENGTH METERS [FEET] |
|------------------|----------------------|
| CAA-90LMICB-03M | .3 [.98] |
| CAA-90LMICB-05M | .5 [1.64] |
| CAA-90LMICB-075M | .75 [2.46] |
| CAA-90LMICB-1M | 1.0 [3.28] |
| CAA-90LMICB-2M | 2.0 [6.56] |
| CAA-90LMICB-3M | 3.0 [9.84] |
| CAA-90LMICB-5M | 5.0 [16.41] |



- NOTES:
- CABLE ASSEMBLY SHALL HAVE 360° SHIELD TERMINATION.
 - CABLE ASSEMBLY SHALL MEET USB 2.0 REQUIREMENTS.
 - CABLE ASSEMBLY SHALL BE TESTED FOR CONTINUITY.
 - CABLE ASSEMBLY SHALL BE INDIVIDUALLY PACKAGED IN ACCORDANCE WITH L-COM SPECIFICATION PS-0031.

REGULATORY COMPLIANCE:
CE2011/65/EU(RoHS DIRECTIVE)

| | | | | |
|---|--|----------------------------|--------------------------|--|
| UNLESS OTHERWISE SPECIFIED, DIMENSIONS ARE IN INCHES [mm] OVERALL CABLE LENGTH TOLERANCE: ≤12 [305] = +1 [25] / -0 >12 [305] ≤60 [1524] = +2 [51] / -0 >60 [1524] ≤120 [3048] = +4 [102] / -0 >120 [3048] ≤300 [7620] = +6 [152] / -0 >300 [7620] = +3% / -0% | APPROVALS | DATE | | 45 BEECHWOOD DRIVE NORTH ANDOVER, MA 01845 |
| | DRAWN BY D. FRISIELLO | 5/20/11 | | CATEGORY |
| ALL OTHER DIMENSIONAL TOLERANCES: .X = ± .2 [5.08] .XX = ± .02 [1.51] .XXX = ± .005 [1.13] | CHECKED BY D. CASTRO | 5/20/11 | PRODUCT DESCRIPTION | |
| PROJECTION | APPROVED BY S. SMITH | 5/20/11 | CA USB STR A-M/90LT MICB | |
| | CONFIGURATION DETAILS OF UNDIMENSIONED FEATURES MAY VARY | COLOR VARIATIONS MAY OCCUR | SIZE A | FSCM NO. 43321 |
| | | | DWG. NO. CAA-90LMICB | REV. B |
| | | | SCALE: NONE | CAD FILE: CAA-90LMICB.SLDDRW |
| | | | SHEET 1 OF 1 | |