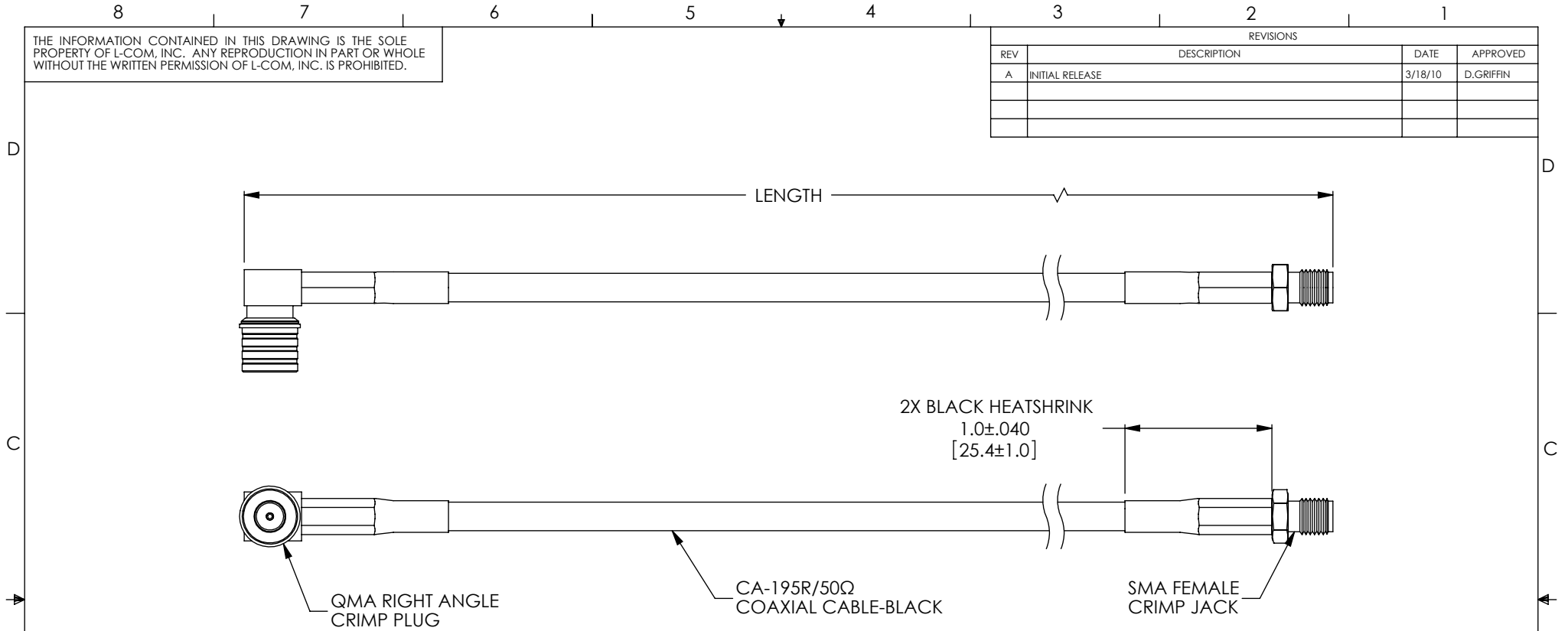


THE INFORMATION CONTAINED IN THIS DRAWING IS THE SOLE PROPERTY OF L-COM, INC. ANY REPRODUCTION IN PART OR WHOLE WITHOUT THE WRITTEN PERMISSION OF L-COM, INC. IS PROHIBITED.

REVISIONS			
REV	DESCRIPTION	DATE	APPROVED
A	INITIAL RELEASE	3/18/10	D.GRIFFIN



LENGTH CODE CHART		
CABLE# & LENGTH	LENGTH SYMBOL	EXAMPLES OF PART# USED
CA-QPRSFAXXX	WHERE XXX = LENGTH IN FEET	CA-QPRSFA010 (10 FEET)
CA-QPRSFANXX	WHERE NXX = LENGTH IN INCHES	CA-QPRSFAN16 (16 INCHES)
CA-QPRSFAMXX	WHERE MXX = LENGTH IN METERS	CA-QPRSFAM07 (7 METERS)
CA-QPRSFAXMX	WHERE XMX = LENGTH IN DECIMAL METERS	CA-QPRSFA3M5 (3.5 METERS)

- NOTE:
1. CABLE ASSEMBLIES TO BE TESTED FOR CONTINUITY.
  2. CABLE ASSEMBLIES TO BE PACKAGED INDIVIDUALLY IN ACCORDANCE WITH L-COM SPECIFICATION PS-0031.

UNLESS OTHERWISE SPECIFIED, DIMENSIONS ARE IN INCHES [mm] OVERALL CABLE LENGTH TOLERANCE: ≤12 [305] = +1 [25] / -0 >12 [305] ≤60 [1524] = +2 [51] / -0 >60 [1524] ≤120 [3048] = +4 [102] / -0 >120 [3048] ≤300 [7620] = +6 [152] / -0 >300 [7620] = +3% / -0% ALL OTHER DIMENSIONAL TOLERANCES: .X = ± .2 .XX = ± .02 .XXX = ± .005	APPROVALS DRAWN BY D. PARHAM CHECKED BY C. BRAN APPROVED BY K. BURGNER	DATE 03/17/2010 03/18/2010 03/18/2010	45 BEECHWOOD DRIVE NORTH ANDOVER, MA 01845		
	CONFIGURATION DETAILS OF UNDIMENSIONED FEATURES MAY VARY	CATEGORY <b>COAXIAL CABLES</b>		PRODUCT DESCRIPTION <b>CA,CA-195 QMA RA P/SMA F</b>	
PROJECTION 	COLOR VARIATIONS MAY OCCUR	SIZE <b>A</b>	FSCM NO. <b>43321</b>	DWG. NO. <b>CA-QPRSFA</b>	REV. <b>A</b>
SCALE: NONE		CAD FILE: CA-QPRSFA.SLDDRW		SHEET 1 OF 1	