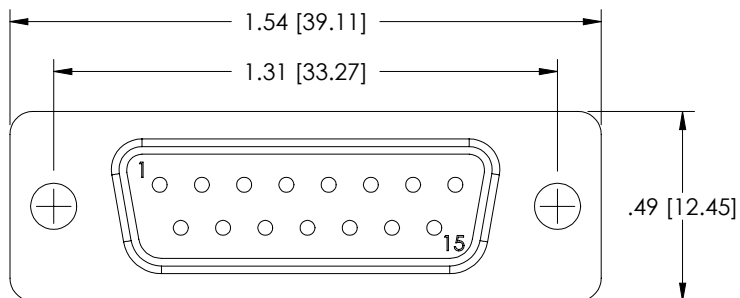
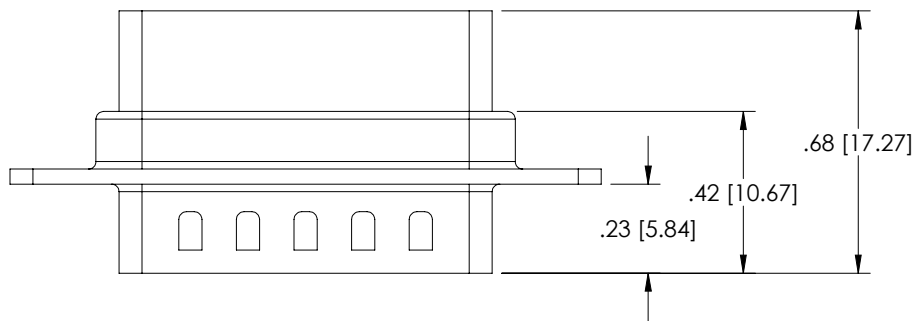


THE INFORMATION CONTAINED IN THIS DRAWING IS THE SOLE PROPERTY OF L-COM, INC.. ANY REPRODUCTION IN PART OR WHOLE WITHOUT THE WRITTEN PERMISSION OF L-COM, INC. IS PROHIBITED.

REVISIONS			
REV	DESCRIPTION	DATE	APPROVED
A	INITIAL RELEASE	12/08/03	B.MAZEJKA
B	ECN 3196: UPDATE DWG FORMAT	2/13/08	D.GRIFFIN
C	ECN3680, ADDED PACKAGING TABLE	2008.10.30	E. STAUBLE
C	ECN999999:REMOVED PACKAGE IN POLYBAG NOTE	11/10/08	D.GRIFFIN



NOTES:

MATERIAL:

SHELL: STEEL
INSULATOR: PBT W/GLASS FIBER FILL (UL 94V-0 RATED)

FINISH:

FRONT SHELL: BRIGHT TIN/NICKEL PLATED
REAR SHELL: BRIGHT TIN PLATED

RoHS Compliant ✓

CATALOG #	PACKAGING
C&P15M	1/BAG
C&P15M-TRAY	50/TRAY

UNLESS OTHERWISE SPECIFIED, DIMENSIONS ARE IN INCHES [mm] OVERALL CABLE LENGTH TOLERANCE: ≤ 12 [305] = +1 [25] / -0 > 12 [305] - 60 [1524] = +2 [51] / -0 > 60 [1524] - 120 [3048] = +4 [102] / -0 > 120 [3048] - 300 [7620] = +6 [152] / -0 > 300 [7620] = +5% / -0% ALL OTHER DIMENSIONAL TOLERANCES: .X = .3 .XX = .15 PROJECTION 	APPROVALS DRAWN BY B.MAZEJKA CHECKED BY C.McCORMICK APPROVED BY D.PARHAM	DATE 11/10/2003 12/08/2003 12/08/2003	 45 BEECHWOOD DRIVE NORTH ANDOVER, MA 01845	
	CONFIGURATION DETAILS OF UNDIMENSIONED FEATURES MAY VARY		CATEGORY DSUB	PRODUCT DESCRIPTION DB15M CRIMP & POKE CONNECTOR
	COLOR VARIATIONS MAY OCCUR	SIZE A	FSCM NO. 43321	DWG. NO. C&P15M
	REF	SCALE: NONE	CAD FILE: C&P15M.SLDDRW	REV. C SHEET 1 OF 1