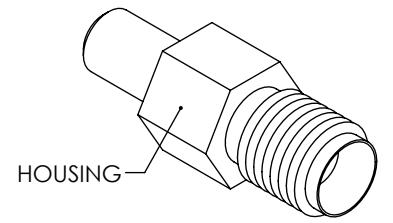
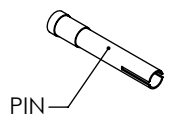
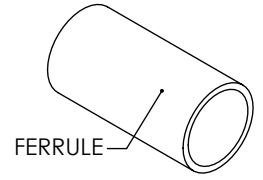
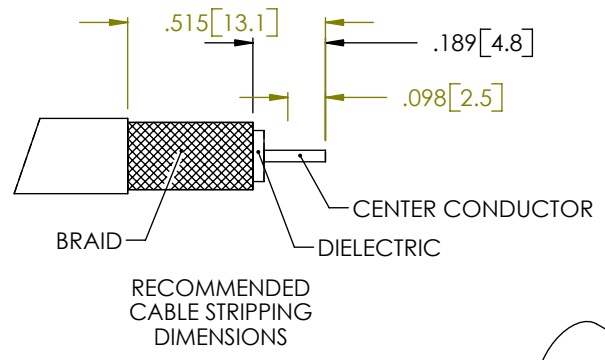
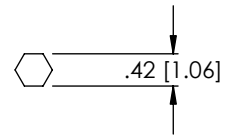
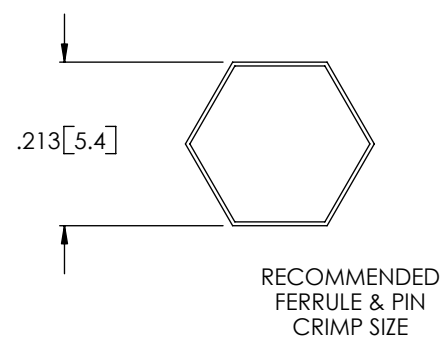
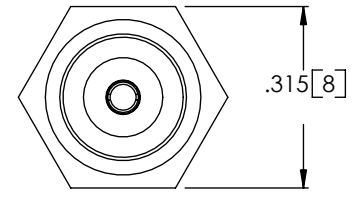
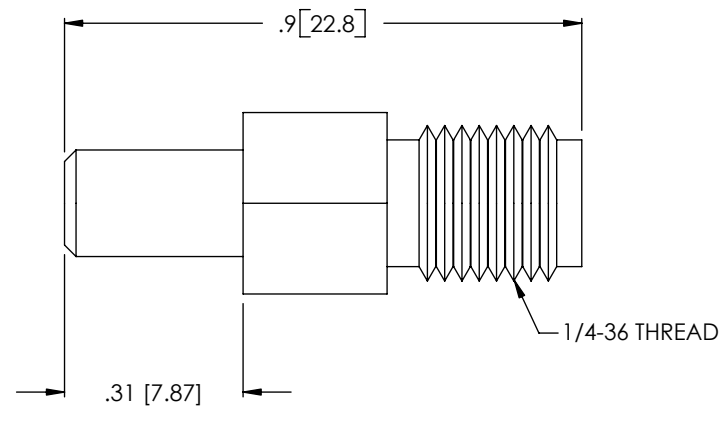
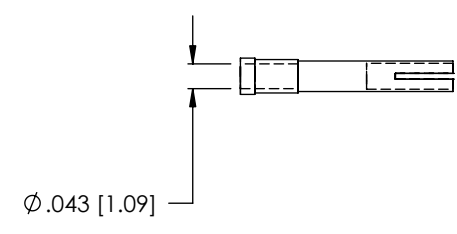
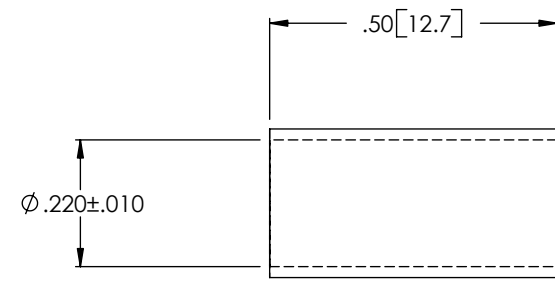


THE INFORMATION CONTAINED IN THIS DRAWING IS THE SOLE PROPERTY OF L-COM, INC. ANY REPRODUCTIONS IN PART OR WHOLE WITHOUT THE WRITTEN PERMISSION OF L-COM, INC. IS PROHIBITED.

REVISIONS			
REV	DESCRIPTION	DATE	CHANGED BY
G	ECN 3150: UPDATE DWG FORMAT	1/10/08	D.GRIFFIN



NOTES:

MATERIAL:
 BODY: BRASS
 FERRULE: BRASS OR COPPER ALLOY
 PIN: BRASS
 INSULATOR: PTFE

FINISH:
 BODY: NICKEL PLATE
 FERRULE: NICKEL PLATE
 PIN: GOLD PLATE

ELECTRICAL:
 IMPEDANCE: 50 OHM

PACKAGING:
 INDIVIDUALLY PACKAGE EACH ASSEMBLY UTILIZING APPROPRIATE SIZED BAG

APPLICATION:
 RG58 CABLE ASSEMBLIES

RoHS Compliant ✓

UNLESS OTHERWISE SPECIFIED, DIMENSIONS ARE IN INCHES [mm]	APPROVALS	DATE
	DRAWN BY C.MCCORMICK	06/13/2001
	CHECKED BY D.PARHAM	06/08/2001
	APPROVED BY R.CARRICK	06/08/2001
TOLERANCES TO BE:	ANGLES ±2°	
.X ±.1 [2.5]		
.XX ±.01 [.25]		
.XXX ±.005 [1.13]		
OVERALL CABLE LENGTH TOL:	CONFIGURATION DETAILS OF UNDIMENSIONED FEATURES MAY VARY	
≤ 60 [1524] +3 [76.2] / -0	MAY OCCUR	
> 60 [1524] +5% / -0%	COLOR VARIATIONS MAY OCCUR	
PROJ		

L-com CONNECTIVITY PRODUCTS		45 BEECHWOOD DRIVE NORTH ANDOVER, MA 01845	
CATEGORY		COAXIAL	
PRODUCT DESCRIPTION			
SMA CRIMP JACK RG58			
SIZE	FSCM NO.	DWG. NO.	REV.
B	43321	BAC05	G
SCALE: 1:1	CAD FILE: BAC05.SLDDRW	SHEET 1 OF 1	