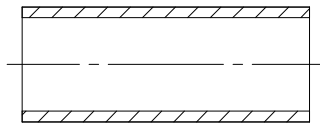
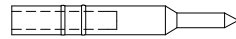


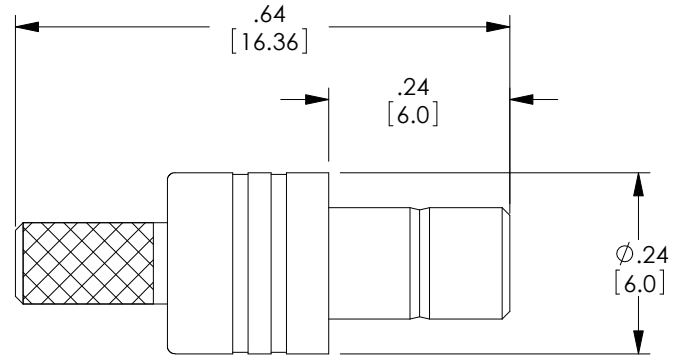
REVISIONS			
REV.	DESCRIPTION	DATE	APPROVED
B	ECN 10508:UPT FERRULE TO BRASS. REVD VSWR TO 1.6 MAX@DC-4GHz	05/19/2020	SRAUTUS



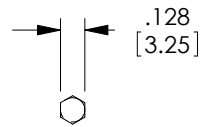
FERRULE



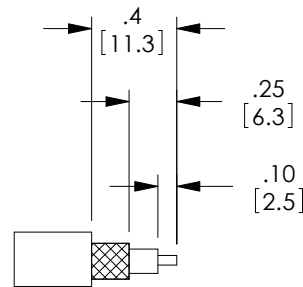
CONTACT PIN  
(SOLDER TYPE)



BODY



FERRULE CRIMP SIZE



RECOMMENDED  
CABLE STRIPPING

**REGULATORY COMPLIANCE:**  
EU RoHS DIRECTIVE (MOST RECENT RELEASED VERSION)

THESE COMMODITIES, TECHNOLOGY OR SOFTWARE WERE EXPORTED FROM THE UNITED STATES IN ACCORDANCE WITH THE EXPORT ADMINISTRATION REGULATIONS. DIVERSION CONTRARY TO U.S. LAW PROHIBITED.

UNLESS OTHERWISE SPECIFIED LEADING DIMENSIONS ARE INCHES DIMENSIONS IN [ ] ARE MILLIMETERS	
TOLERANCES:	
.X=± .2 [5.08]	FRACTIONS ± 1/32
.XX=± .01 [ .25 ]	ANGLES ± 1°
.XXX=± .005 [ .13 ]	
ALL DIMENSIONS SHOWN ARE FOR REFERENCE ONLY.	
THIRD-ANGLE PROJECTION	

**L-com**  
an INFINITO brand  
50 High Street, West Mill, 3rd Floor, Suite #30  
North Andover, MA 01845 USA.  
Phone: 1.800.341.5266 | 1.978.682.6936  
Fax: 1.978.689.9484  
www.L-com.com | e-mail: CustomerService@L-com.com

SIZE	CAGE	DRAWN BY	PART NUMBER
A	43321	DFRISIELLO	ASMBJ-1100

THE INFORMATION AND DESIGN IN THIS DOCUMENT IS THE PROPERTY OF L-COM GLOBAL CONNECTIVITY. ALL RIGHTS RESERVED.	
SHEET	OF
1	1
SCALE	N/A
REV	B