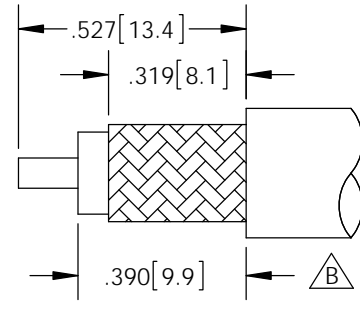
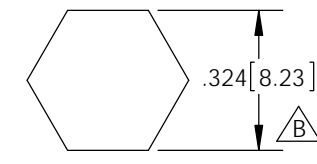
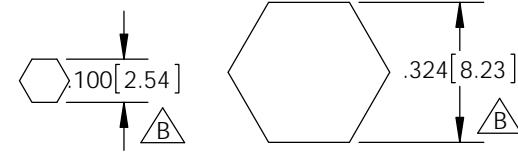
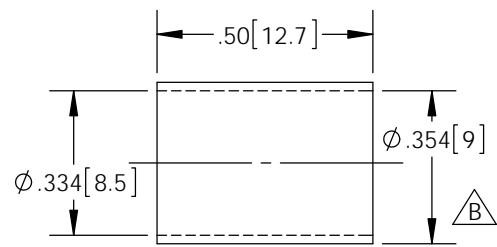
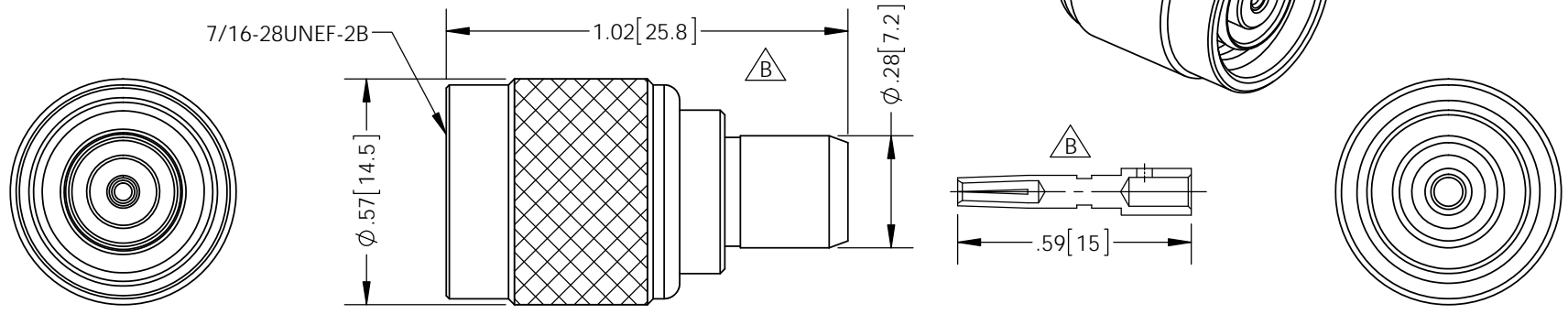


THE INFORMATION CONTAINED IN THIS DRAWING IS THE SOLE PROPERTY OF L-COM, INC. ANY REPRODUCTION IN PART OR WHOLE WITHOUT THE WRITTEN PERMISSION OF L-COM, INC. IS PROHIBITED.

REVISIONS			
REV	DESCRIPTION	DATE	APPROVED
A	INITIAL RELEASE	09/19/12	D.GRIFFIN
B	ECN 8633 UPDATE SPECIFICATIONS	02/07/17	B.PUCHASKI

DESCRIPTION	MATERIAL	FINISH
CENTER CONTACT	BRASS	GOLD
OUTER CONTACT	BRASS	NICKEL
OUTER CONTACT-2	BRASS	NICKEL
CRIMP FERRULE	BRASS	NICKEL
INSULATOR	PTFE	---



NOTES:

ELECTRICAL:
 IMPEDENCE: 50 OHMS
 VOLTAGE RATING: 500 VOLTS PEAK
 DIELECTRIC WITHSTAND VOLTAGE: 1500V
 FREQUENCY RANGE: 0-11 GHz
 INSERTION LOSS: . 20 dB
 VSWR: ≤ 1.50 @ 0-6 GHz $\triangle B$
 DURABILITY: > 500 CYCLE
 CABLE RETENTION: > 40 POUNDS

MISCELLANEOUS:
 COMPONENTS SHALL BE BULK PACKAGED 10 PER BAG


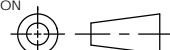
- ALL DIMENSIONS ARE FOR REFERENCE ONLY -

REGULATORY COMPLIANCE:
 CE2011/65/EU(RoHS DIRECTIVE)

RECOMMENDED
 PIN
 CRIMP SIZE

RECOMMENDED
 FERRULE
 CRIMP SIZE

RECOMMENDED CABLE
 STRIPPING

UNLESS OTHERWISE SPECIFIED, DIMENSIONS ARE IN INCHES [mm] DIMENSIONAL TOLERANCES: .X = ±.1 [2.54] .XX = ±.01 [25] .XXX = ±.005 [13] ANGULAR TOLERANCES: ALL = ± 1°	APPROVALS	DATE	 50 HIGH STREET NORTH ANDOVER, MA 01845	
	DRAWN BY B.PUCHASKI	09/18/12		
	CHECKED BY K.BURGNER	09/18/12	PRODUCT DESCRIPTION RP-TNC PLUG CRIMP CONNECTOR FOR 300 SERIES CABLE	
	APPROVED BY P.PESA	09/18/12		
PROJECTION 	COLOR VARIATIONS MAY OCCUR	SCALE: NONE	CAD FILE: ARTP-1312.SLDDRW	SHEET 1 OF 1