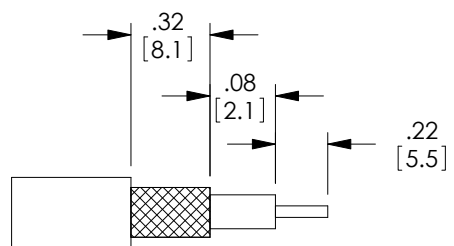
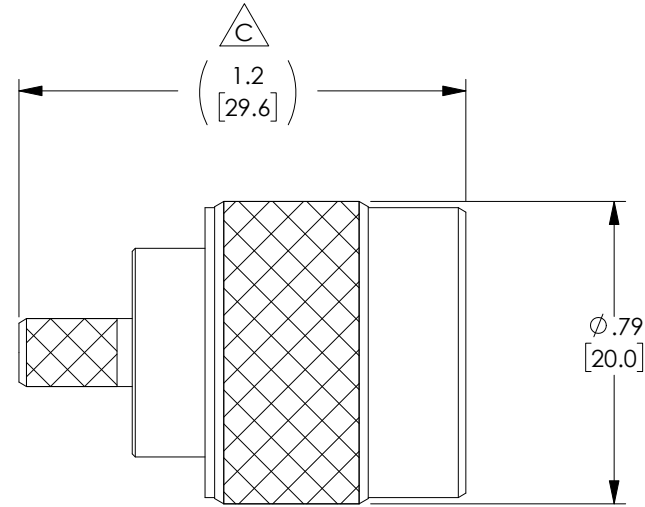
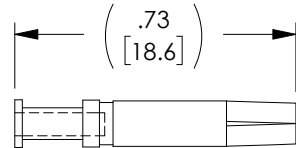
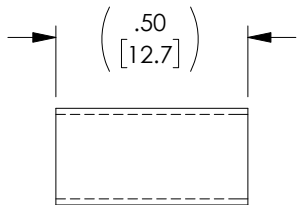


THE INFORMATION CONTAINED IN THIS DRAWING IS THE SOLE PROPERTY OF L-COM, INC. ANY REPRODUCTION IN PART OR WHOLE WITHOUT THE WRITTEN PERMISSION OF L-COM, INC. IS PROHIBITED.

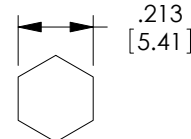


REVISIONS			
REV	DESCRIPTION	DATE	APPROVED
A	INITIAL RELEASE	10/26/06	P.PESA
B	ECN 5251: UPDATE DRAWING FORMAT, NOTES, PACKAGING	1/14/11	D.FRISIELLO
C	ECN 9197: ADDED DIM REF NOTE, REVISED DIMS, FORMAT, FINISH	5/8/18	D.FRISIELLO

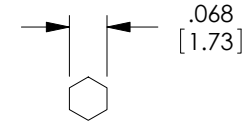
DESCRIPTION	MATERIAL	FINISH
BODY	BRASS	NICKEL PLATE
DIELECTRIC	PTFE	NATURAL
CENTER PIN	BRASS	GOLD PLATE
RETAINING RING	BRASS	NICKEL PLATE
GASKET	SI-RUBBER	ORANGE
FERRULE	BRASS	NICKEL PLATE



RECOMMENDED CABLE STRIPPING



RECOMMENDED FERRULE CRIMP



RECOMMENDED CONTACT CRIMP

NOTES:

ELECTRICAL:
 IMPEDANCE: 50 OHMS
 FREQUENCY RANGE: DC ~ 6 GHz
 VOLTAGE RATING: 1500 VOLTS PEAK
 DIELECTRIC WITHSTANDING VOLTAGE: 2500 VOLTS RMS
 CABLE RETENTION: 30 LBS PULL
 APPLICATIONS: RG58, LMR195

ALL DIMENSIONS ARE FOR REFERENCE ONLY.

PACKAGING:
 COMPONENT SHALL BE INDIVIDUALLY PACKAGED IN ACCORDANCE WITH L-COM SPECIFICATION PS-0031.

REGULATORY COMPLIANCE:
 CE2011/65/EU(RoHS DIRECTIVE)

UNLESS OTHERWISE SPECIFIED, DIMENSIONS ARE IN INCHES [mm] OVERALL CABLE LENGTH TOLERANCE: ≤12 [305] = +1 [25] / -0 >12 [305] ≤60 [1524] = +2 [51] / -0 >60 [1524] ≤120 [3048] = +4 [102] / -0 >120 [3048] ≤300 [7620] = +6 [152] / -0 >300 [7620] = +5% / -0% ALL OTHER DIMENSIONAL TOLERANCES: .X = ±.2 [5.08] .XX = ±.02 [51] .XXX = ±.005 [13]	APPROVALS	DATE	50 HIGH STREET NORTH ANDOVER, MA 01845
	DRAWN BY D.FRISIELLO CHECKED BY K.BURGNER APPROVED BY K.BURGNER	1/11/11 1/11/11 1/11/11	
PROJECTION 	CONFIGURATION DETAILS OF UNDIMENSIONED FEATURES MAY VARY COLOR VARIATIONS MAY OCCUR	PRODUCT DESCRIPTION TYPE N RP PLUG CRIMP, LMR195/RG58	SCALE: NONE CAD FILE: ARNP-1700.SLDRW SHEET 1 OF 1
	SIZE A	FSCM NO. 43321	DWG. NO. ARNP-1700
			REV. C

D
C
B
A

D
C
B
A

8 7 6 5 4 3 2 1

8 7 6 5 4 3 2 1