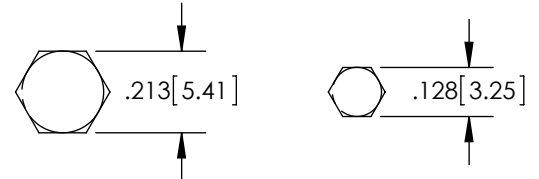


THE INFORMATION CONTAINED IN THIS DRAWING IS THE SOLE PROPERTY OF L-COM, INC. ANY REPRODUCTION IN PART OR WHOLE WITHOUT THE WRITTEN PERMISSION OF L-COM, INC. IS PROHIBITED.

REVISIONS			
REV	DESCRIPTION	DATE	APPROVED
A	INITIAL RELEASE	10/31/13	D.GRIFFIN

DESCRIPTION	MATERIAL	FINISH
CENTER PIN	BRASS	GOLD
BODY	BRASS	NICKEL
WASHER	BRASS	NICKEL
NUT	BRASS	NICKEL
O-RING	RUBBER	---
CRIMP FERRULE	BRASS	NICKEL
INSULATOR	TEFLON	---



RECOMMENDED
FERRULE
CRIMP SIZE-1

RECOMMENDED
FERRULE
CRIMP SIZE-2

D

D

C

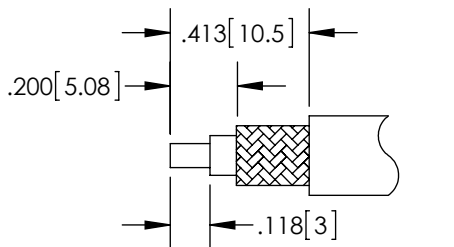
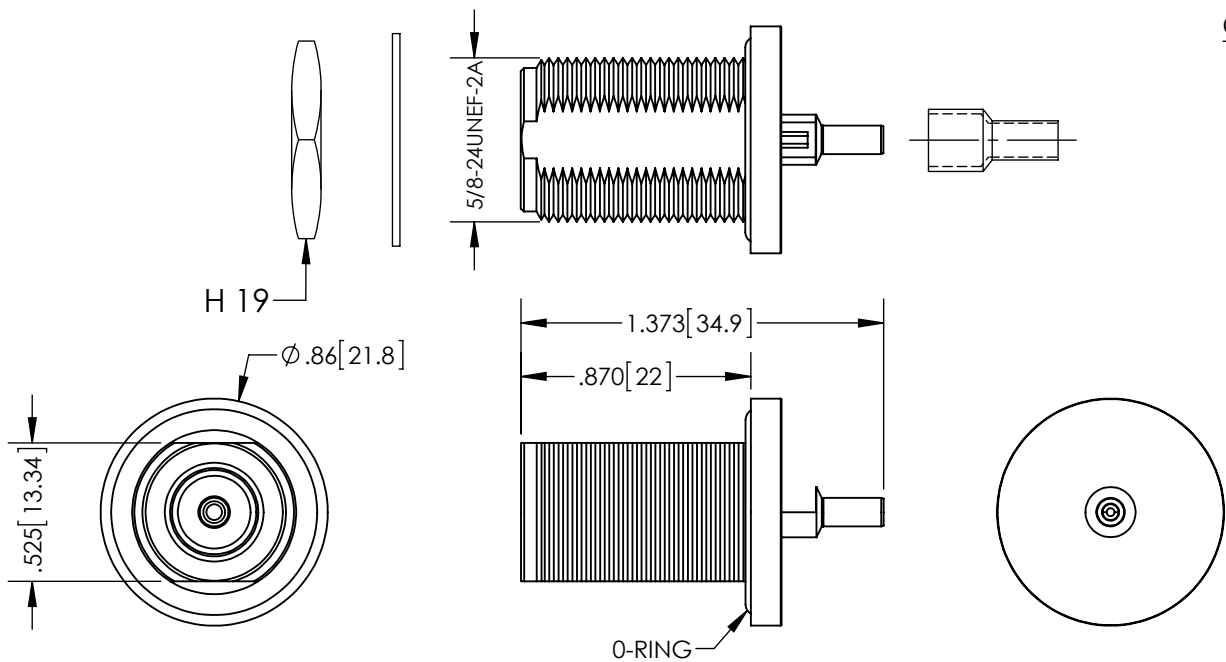
C

B

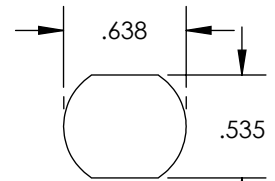
B

A

A



RECOMMENDED CABLE
STRIPPING



SUGGESTED CUT-OUT
FOR BULKHEAD

NOTES:
ELECTRICAL:
IMPEDANCE: 50 OHMS

MISCELLANEOUS:
COMPONENTS SHALL BE INDIVIDUALLY PACKAGED IN ACCORDANCE WITH L-COM SPECIFICATIONS PS-0031.

ALL DIMENSIONS ARE FOR REFERENCE ONLY.

REGULATORY COMPLIANCE:
CE2011/65/EU (RoHS DIRECTIVE)

UNLESS OTHERWISE SPECIFIED, DIMENSIONS ARE IN INCHES [mm] DIMENSIONAL TOLERANCES: .X = ±.1 [2.54] .XX = ±.01 [.25] .XXX = ±.005 [.13] ANGULAR TOLERANCES: ALL = ± 1° PROJECTION 	APPROVALS B.PUCHASKI CHECKED BY K.BURGNER APPROVED BY P.PESA	DATE 10/31/13 10/31/13 10/31/13		45 BEECHWOOD DRIVE NORTH ANDOVER, MA 01845	
	CATEGORY COAXIAL		PRODUCT DESCRIPTION N-FEMALE BULKHEAD CRIMP CONNECTOR FOR LMR100		
	COLOR VARIATIONS MAY OCCUR	SIZE A	FSCM NO. 43321	DWG. NO. ANF-3102	REV. A
	SCALE: NONE		CAD FILE: ANF-3102.SLDDRW		SHEET 1 OF 1